



Workgroup Members

Tom Shanahan – Chair

NIOSH: Liz Garza, Scott Breloff, T.J. Lentz, Christina Socias-Morales, Chris Pan, Nancy Romano, Ted Scharf

- ▶ Ahmed Al-Bayati
- ▶ Henry Anderson
- ▶ Eileen Betit, Jessica Bunting
- ▶ Shelley Brewer
- ▶ Wayne Creasap
- ▶ Chip Darius
- ▶ Janie Gittleman
- ▶ Dan Glucksman

- ▶ Raffi Elchemmas
- ▶ Michael Fiore
Cecilia Lujan
- ▶ Reese Fortin
- ▶ Mark Fullen
- ▶ Gayla Hurson
- ▶ Denis Logie
- ▶ Vicky Kaskutas
- ▶ Alex Kopp
- ▶ Thom Kramer
- ▶ Howard Marks
- ▶ Rob Matuga
- ▶ Todd Mustard
- ▶ Mike McCullion
- ▶ Travis Parsons
- ▶ Philip Pederson
- ▶ Ken Rueter
Clint Wolfley
- ▶ Ron Sokol
- ▶ Chuck Stribling
- ▶ Linda Spitzer
- ▶ Richard Tessier
- ▶ Rich Trewyn
- ▶ Paul Wrzesinski



Construction
Sector Council



Workgroup Charge

AIM: take on activities that the sector council could do as a group to prevent falls in the construction industry.

- ▶ Burden, need & impact should help guide your efforts.
- ▶ NORA agenda is about safety & health **research** in construction.
- ▶ Whatever we select as an activity will be **evaluated**.
- ▶ r2p, PtD, training, small business & disproportionate risk should be taken into consideration for each activity selected.



NORA Year in Review Eval

 Construction
Sector Council



- 1) What **activities** have you undertaken this year?
- 2) What **products** have you completed this year?
- 3) Did the council and/or workgroups set any **milestones/goals/objectives** for this year?
- 4) Did the council engage in or contribute to the establishment or maintenance of any **partnerships** this year?
- 5) Did you face any major **obstacles or challenges** this year? How did you address them?
- 6) Please describe any **success stories** from this year.

These are usually instances when someone else takes action based on a council activity or product. For example, individuals or organizations working towards NORA objectives (especially those outside of NIOSH), or other organizations making changes to their policies or practices based on council activities or products.



Activity 1- Better Reaching Small Employers

Activity 2- Taking employers to the next level

Activity 3- 'Forensics of Falls'

Activity 4- Improving fall prevention programs

Activity 5- Create a tool to assess & rate fall risk activities

Activity 6- Ladder & scaffolds – increase awareness

Activity 7- National Campaign to Prevent Falls in Construction

Activity 8- Lowe's / Home Depot → Strategic Partnerships

Other activities



- Develop **resources to integrate safety into business development** ideas.
- Increase **surveillance on fall protection**, how fall protection is used.
- **Designing out the fall hazards**: continuing focus on top of hierarchy of control
 - BIMM
 - Working with manufacturers to build in fall protection, etc.
- Looking at **new technologies**
 - Exoskeletons
 - Drones
 - New processes going into roofing/electrical that may create new fall hazards
 - New pieces of equipment for fall protection that may increase the misuse of equipment
 - Smart phones/apple watch/next generation
- Looking at **safer ways to get equipment (shingles) to the roof**
- Develop and train on **fall rescue plans**



What have we accomplished since our last NORA Sector Council Meeting?



Activity 1- Better Reaching Small Employers

Activity 2- Taking employers to the next level

Activity 3- 'Forensics of Falls'

Activity 4- Improving fall prevention programs

Activity 5- Create a tool to assess & rate fall risk activities

Activity 6- Ladder & scaffolds – increase awareness

Activity 7- National Campaign to Prevent Falls in Construction

Activity 8- Lowe's / Home Depot → Strategic Partnerships

Developed a new resource designed to reach small employers

Small Contractors Fall Prevention Post Card & website

SAVE Time and Money

3 simple steps to prevent a fall



STEP 1 - PLAN each day to prevent falls on the job.

STEP 2 - PROVIDE the right safety tools and equipment for the job.

STEP 3 - TRAIN your employees on the equipment and work practices to prevent falls.

Find **FREE** materials*

[invaif.com/StopConstructionFalls](https://www.invaif.com/StopConstructionFalls)



Scan me

* When you scan the QR Code or use the URL, you will not be asked for any company or personal information. The goal is to prevent falls and injuries by providing free information to construction contractors, their employees and competent persons (<https://www.osha.gov/SLTC/competentperson/index.html>). The materials were compiled by the National Institute for Occupational Safety and Health and CPWR-The Center for Construction Research and Training.

PLAN PROVIDE TRAIN
Three simple steps to preventing falls



CPWR
THE CENTER FOR CONSTRUCTION
RESEARCH AND TRAINING
August 2020

AHORRE Tiempo y Dinero

3 pasos sencillos para prevenir caídas



PASO 1 - PLANIFIQUE cada día para prevenir caídas en el trabajo.

PASO 2 - PROPORCIONE las herramientas adecuadas y el equipo de seguridad necesario para el trabajo.

PASO 3 - CAPACITE a sus empleados con el equipo de seguridad y sobre prácticas laborales para prevenir caídas.

Encuentre materiales **GRATUITOS***

[invaif.com/Espanol/StopConstructionFalls](https://www.invaif.com/Espanol/StopConstructionFalls)



Escaneame

*Cuando escanee el código QR o use el URL, no se le pedirá ninguna información personal ni de su empresa. El objetivo es evitar caídas y lesiones proporcionando información gratuita a los contratistas de la construcción, sus empleados y personas competentes (<https://www.osha.gov/competent-person>). Los materiales fueron compilados por el Instituto Nacional de Seguridad y Salud Ocupacional y el Centro de Investigación y Capacitación en Construcción (CPWR).

PLANIFIQUE PROPORCIONE CAPACITE
Siga tres pasos sencillos para prevenir caídas.



CPWR
THE CENTER FOR CONSTRUCTION
RESEARCH AND TRAINING
Agosto 2020

<https://stopconstructionfalls.com/prevent-falls-training-other-resources/plan-provide-train/>

HOME PAGE – blue type - hyperlinks to interior pages



PLAN. PROVIDE. TRAIN.

Three simple steps to preventing falls.

Save Your Company Time and Money by PREVENTING FALLS

Click on the **links** below to find free tools and materials to help you:

1. **Plan** ahead to prevent falls on the job
2. **Provide** the right tools and equipment for the job
3. **Train** your employees on the equipment and work practices to prevent falls
 - **Videos** to watch and learn
 - **Toolbox Talks** to help talk to your employees about safety
 - **Hazard Alert Cards** to give to your employees as reminders of safe practices

<https://stopconstructionfalls.com/prevent-falls-training-other-resources/plan-provide-train/>

STEP 1 - When the user clicks **Plan** on the Home page

PLANNING to prevent a fall starts when you are estimating the cost of a job. Here are some questions to think about to get you started.

[Click here](#) to download a simple form to develop your **Fall Prevention Plan**

[Click here](#) to download your **Daily Job Site Checklist** for recognizing and preventing Falls.

If you are ready to create a more **detailed plan**, [click here](#).

1. What fall exposures are expected?

- Deck or floor integrity (underside of deck, points of possible failure due to corrosion, etc.)
- Roof edge exposure where parapets are not at least 39" high
- Holes, skylights, hatches, or skylights openings
- Loading/offloading, material handling, access points
- Ladders (set up or take down, climbing up and down, using to perform work)
- Scaffolds (climbing onto, using to perform work)
- Open-sided ramps, floors or other walking/working surfaces, etc. with unprotected edges/sides
- Job-related material handling trip hazards
- Roof and other material loading and off loading
- ATV or other motorized equipment use
- Penthouse (access, work in a small area)
- Conduit or other piping (gas, water)
- Other (describe)

2. What fall protection will be used?

- Guardrail system (GRS)
- Scaffold w/guardrails
- Scissor lift
- Personal fall restraint system
- Personal fall arrest system (PFA)
- Covers for holes and openings
- Safety Monitor with warning lines
- Safety Monitor on roofs $\leq 50'$ in width
- Guardrails system with toe board
- Horizontal life lines
- Roofing slide guards (used with PFA, GRS or SNS)
- Catch platform
- Safety net system (SNS)
- Warning line (low slope roofs only – 4 in 12 [or 4:12] or less)
- General awareness training (describe)
- Other (describe)

3. Specifically, who will ensure the proper inspection, use, set up, and take down of fall protection?

4. How will drop hazards/falling objects be prevented?

- Inspect and protect for overhead holes/gaps
- Set up a restricted area below overhead work
- Tether tools and materials where possible
- Properly store tools, materials and refuse at heights
- Hoisted materials to be secured/netted
- Other (describe)

5. If a worker falls:

- a) How will the fallen worker be rescued?
- b) Who will be contacted in the event of an emergency?

Step 1: PLAN

[Click here](#) to download a simple form to develop your **Fall Prevention Plan**.

Form can be filled in, saved and/or printed easily. [English & Spanish]

PLAN. PROVIDE. TRAIN.

Three simple steps to preventing falls.



FALL PREVENTION PLAN

Company Name _____ Date _____

Job Site Address _____

1) What fall exposures are expected? (Check all hazards you expect to find.)

- Deck or floor integrity (underside of deck, points of possible failure due to corrosion, etc.)
- Roof edge exposure where parapets are not at least 39" high
- Holes, skylights, hatches or skylight openings
- Loading/offloading, material handling, access points
- Ladders (set-up or take down, climbing up and down, using to perform work)
- Scaffolds (climbing onto, using to perform work)
- Open-sided ramps, floors or other walking/working surfaces, etc. with unprotected edges/sides
- Job-related material handling trip hazards
- Roof and other material loading and off loading
- ATV or other motorized equipment use
- Penthouses (access, work in a small area)
- Conduit or other piping (gas, water)
- Other (describe): _____
- Other (describe): _____

2) What fall protection will be used? (Check all the ways that you will prevent the fall hazards.)

- Guardrail system (GRS)
- Scaffold w/guardrails
- Scissor lift
- Personal fall restraint system
- Personal fall arrest system (PFA)
- Covers for holes and openings
- Safety Monitor with warning lines
- Safety Monitor on roofs $\leq 50'$ in width
- Guardrails system with toe board
- Horizontal lifelines
- Roofing slide guards (used with PFA, GRS or SNS)
- Catch platform
- Safety net system (SNS)
- Warning line (low slope roofs only 4 in 12 [or 4:12] or less)
- General awareness training (describe): _____
- Other (describe): _____

3) Specifically, who will ensure the proper inspection, use, set up, and take down of fall protection?

4) How will drop hazards/falling objects be prevented?

- Inspect and protect for overhead holes/gaps
- Set up a restricted area below overhead work
- Tether tools and materials where possible
- Properly store tools, materials and refuse at heights
- Hoisted materials to be secured/netted
- Other (describe): _____
- Other (describe): _____
- Other (describe): _____

5) If a worker falls:

a) How will the fallen worker be rescued?

b) Who will be contacted in the event of an emergency? _____

Please attach a list of the employees who have reviewed this plan and have been trained on the protective equipment to be used

*Learn about requirements for competent persons and fall protection: <https://www.osha.gov/SLTC/competentperson/index.html>
Source: Adapted from a Fall Protection Work Plan developed by Washington State Department of Labor & Industries <https://lni.wa.gov/safety-health/preventing-injuries-illnesses/create-a-safety-program/sample-safety-program-plans>, Fall Protection Work Plans • <https://lni.wa.gov/safety>

Step 1: PLAN

If you are ready to create a more **detailed plan**, [click here](#). There is a template for a Generic Written Fall Protection & Rescue Plan (14pg.). Form can be filled in, saved and/or printed easily. [English & Spanish]

PLAN . PROVIDE . TRAIN .

Three simple steps to preventing falls.

FALL PROTECTION PLAN

1. JOBSITE/BUILDING DETAILS

Use the following page to sketch and note the important details of the jobsite. Be sure to consider:

- Type of jobsite or building (e.g. two-story residential home, commercial high-rise, highway work)
- Type of work being done (e.g. framing, roofing, electrical, restoration)
- [Prevention through Design](#) measures already in place (e.g. permanent railings or permanent ladders)
- Relevant work surfaces & building materials (e.g. abrasive concrete edges, slippery floors)
- Estimated duration of job (should you consider longer-term solutions such as scaffolding vs. moveable lifts?)

2. FALL HAZARDS IN THE WORK AREA

In the construction sector OSHA requires fall protection for workers at heights of 6' or more above the ground or a lower level, but slips, trips, and falls can occur at any height. In order to make this plan comprehensive and useful to everyone interested in providing a safer work environment for their employees, we have included these hazards as well.

Check all that apply. Add others in the empty rows if necessary. Include locations and dimensions next to each hazard, and/or note these hazards on your drawing above.

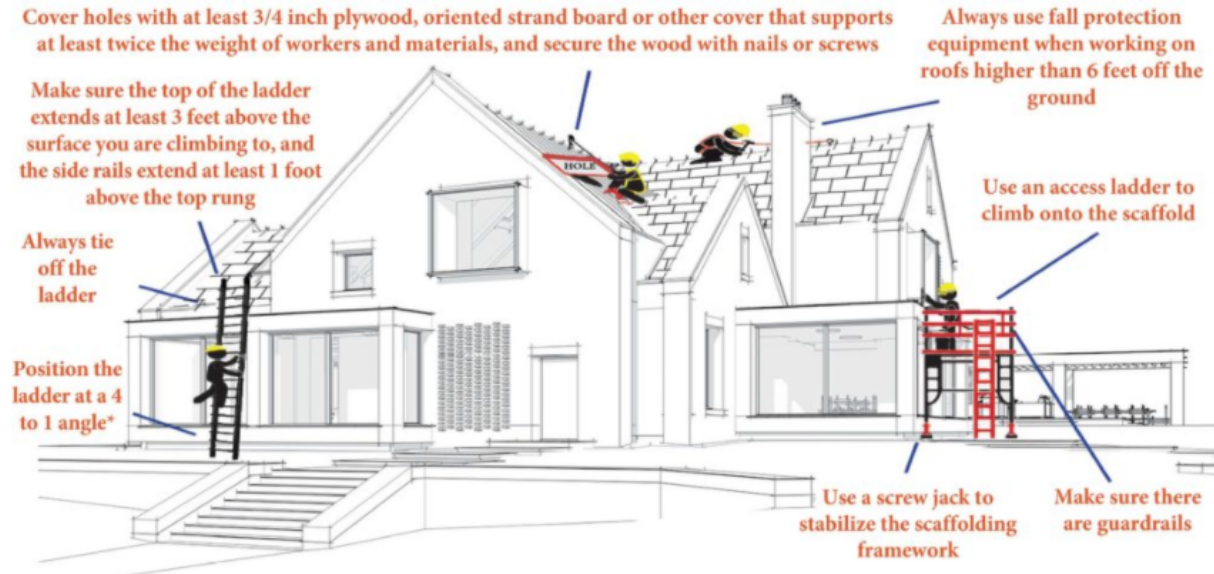
✓	Hazard	Location	Dimensions/Details
	Open-sided walking/working surfaces (i.e. roofs, open-sided floors)		
	Open-sided ramps, runways, platforms		
	Leading Edge(s)		
	Floor openings		
	Wall or window openings		
	Skylight openings		
	Elevator shaft		
	Stairwell		
	Trenches		
	Uneven surfaces or surfaces that do not meet the definition of a walking/working surface		
	Other:		

3. ACCESS EQUIPMENT BEING USED

STEP 2 - When the user clicks **Provide** on the Home page

Employees should be provided the right tools and equipment for the job to prevent a fall.

Step 2: PROVIDE



Learn more about types of fall protection equipment at:

StopConstructionFalls.com:

- [Ladders](#)
- [Roofs](#)
- [Scaffolds](#)

[OSHA Fall Protection Resources](#)

[CPWR Construction Solutions](#)

PLAN . PROVIDE . TRAIN .

Three simple steps to preventing falls.

STEP 3 - When the user clicks **Train** on the Home page

Step 3: TRAIN

Employers are required to train their employees on use of fall protection and how to prevent falls. The following resources can help:

- **Videos** to watch and learn
- **Toolbox Talks** to help talk to your employees about safety
- **Hazard Alert Cards** to give to your employees as reminders of safe practices



Videos – to watch with or share with your employees to learn about fall prevention

[Safety Ladder Practices in Roofing](#) (Spanish)

[Partners in Safety: An Insurance and Small Business Perspective](#) (English only)

[Preventing Falls Through Skylights](#) (Spanish)

[Safety Pays. Falls Costs.](#) Hear how the owner of this residential framing company designs safety into each of his job sites. (English Only)

[La seguridad paga, las caídas cuestan.](#) Hear from a roofer in the residential construction industry on the importance of using fall protection. (Spanish only)

[A Simple Task – Fatal Ladder Fall](#) (English only)

[CPWR's Don't Fall For It Video](#) (English only)

[OSHA Fall Prevention Videos \(v-Tools\)](#) (English only)





Activity 1- Better Reaching Small Employers

Activity 2- Taking employers to the next level

Activity 3- 'Forensics of Falls'

Activity 4- Improving fall prevention programs

Activity 5- Create a tool to assess & rate fall risk activities

Activity 6- Ladder & scaffolds – increase awareness

Activity 7- National Campaign to Prevent Falls in Construction

Activity 8- Lowe's / Home Depot → Strategic Partnerships

Root Cause Analysis Survey

 Construction
Sector Council



- CPWR working with the ANSI Z359 Committee to develop and disseminate a root cause analysis survey on falls

Tuesday, December 15th, 2020 at 2:00pm EST

Identifying Common Root Causes of Falls from Heights

CPWR and the ANSI Z359 Committee are working together to create and administer a new survey to collect detailed information on past fall incidents and their root causes. The survey aims to fill gaps in knowledge left by the Bureau of Labor Statistics CFOI data and other traditional data sets by focusing on the experiences and observations of workers, contractors, and other industry stakeholders who were victims of or witnesses to a fall. In this hour-long webinar, including Q&A, Thom Kramer and Jane Beaudry will provide background on the need for this type of qualitative data, describe how it will inform the ANSI Z359 Committee's development of standards as well as CPWR's fall prevention outreach efforts, and conduct a review of the survey instrument and methodology.

Welcome & Introduction:

Chris Trahan Cain, Executive Director, CPWR

Jessica Bunting, Assistant Director, r2p, CPWR

Panelists:

Thom Kramer, PE, CSP, LJB Inc. Principal & Z359 Accredited Standards Committee Chairman

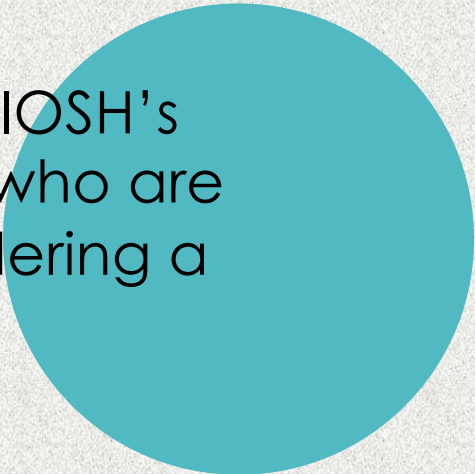
Jane Beaudry, Sr. HSE Manager, Jacobs, member of the ANSI/ASSP Z359 National Work at Heights Subcommittee

[Click here to register and submit a question for our panelists in advance](#)

Considering leading indicators, too, such as Close Calls



Have had a number of conversations via NIOSH's Dr. Emily Haas, with different organizations who are practicing accident prevention by engendering a safety culture where workers:

- ▶ share close call stories
 - ▶ coach fellow workers on safe behavior and
 - ▶ describe situations where unsafe behaviors are occurring
- 



- Activity 1- Better Reaching Small Employers
- Activity 2- Taking employers to the next level
- Activity 3- 'Forensics of Falls'
- Activity 4- Improving fall prevention programs
- Activity 5- Create a tool to assess & rate fall risk activities
- Activity 6- Ladder & scaffolds – increase awareness**
- Activity 7- National Campaign to Prevent Falls in Construction
- Activity 8- Lowe's / Home Depot → Strategic Partnerships

Ladder Climbing



- ▶ One provision of the OSHA ladder regulation states: “Each employee shall use at least one hand to grasp the ladder when progressing up and/or down the ladder.”
- ▶ OSHA stated in a June 2019 letter of interpretation that the intent of the regulatory language “...is for employers to ensure that workers maintain "three-point contact" (i.e., three points of control) with the ladder at all times while climbing.” *June 2019 OSHA LOI to Nigel Ellis

Ladder Climbing Terminology



- ▶ Consider what the phrase “3-points of contact” means.
- ▶ What does someone mean when that is used to describe a desired behavior for ascending or descending a ladder?
- ▶ Here are a couple videos that illustrate the issue with the regulatory language and practical ladder usage.

Video #1: A “normal” climb



Video 2: A “normal” climb slowed



Video 3: 3-points of contact—siderails



Video 4: 3-points—siderails—slo mo



Video 5: 3-points using rungs



Video 6: 3-points descent



Points to Consider

The words matter...

- ▶ Saying **3-points of contact** actually means something, but it isn't necessarily what is being intended by those who use the terminology
- ▶ An old familiar ladder-climbing adage is: Rails UP, Rungs DOWN
- ▶ CPWR data search reveals ladder-related falls rarely occur from hands slipping off rails/rungs
- ▶ As we consider training how to safely ascend and descend ladders, being mindful of the meaning of the words we're saying versus what we're intending by using catch-phrases is important to build awareness of how to be safe.

- Activity 1- Better Reaching Small Employers
- Activity 2- Taking employers to the next level
- Activity 3- 'Forensics of Falls'
- Activity 4- Improving fall prevention programs
- Activity 5- Create a tool to assess & rate fall risk activities
- Activity 6- Ladder & scaffolds – increase awareness
- Activity 7- National Campaign to Prevent Falls in Construction**
- Activity 8- Lowe's / Home Depot → Strategic Partnerships



Annual Stand-Down

	# Requested
Hard Hat Sticker	210, 671
Ladder Hazard Alert	35,065
Scaffolds Hazard Alert	29,988
Fall Harness Hazard Alert	37,195
Aerial Lift Hazard Alert	33,560

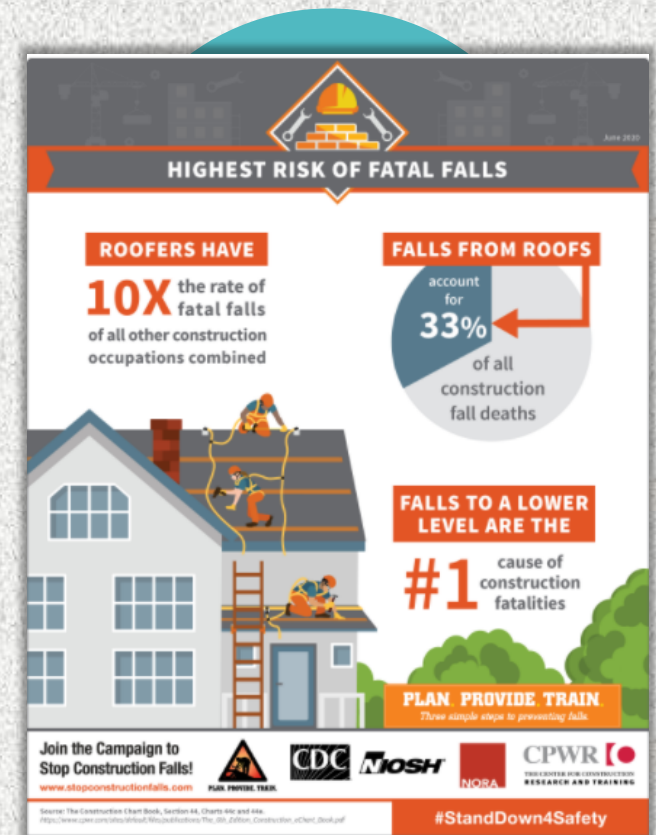
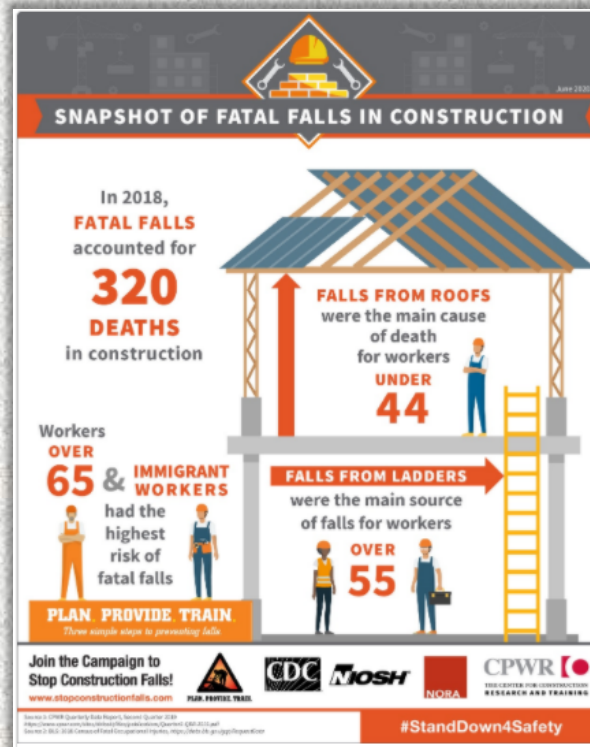
National Safety
Stand-Down
 To Prevent Falls in Construction

SEPTEMBER 14-18, 2020



<https://stopconstructionfalls.com/about-the-campaign/evaluation-efforts/>

Co-Branded Infographics



<https://stopconstructionfalls.com/infographics/>

Co-Branded Infographics



MAST CLIMBING WORK PLATFORMS

June 2020

Best practices for using Mast Climbing Work Platforms (MCWPs or mast climbers):

- Inspect the equipment according to manufacturer guidelines and recommendations.
- Conduct ongoing checks for changes to the equipment and the job site.
- Refer to the rate load chart on equipment to avoid overloading a mast climber.
- Make sure all workers have been trained by a qualified person.*
- Select a competent person* to oversee the mast climber.
- Use a personal fall arrest system when working at heights and near an open edge.
- Monitor changes in weather.

Mast climbers may present fall hazards

NIOSH offers an online inspection tool to help identify hazards and prevent falls:

Scan the QR code with your phone's camera to visit the Mast Climbing Work Platform page and use the Daily Inspection Walkthrough tool. Using the inspection tool is not a substitute for OSHA training requirements for MCWPs.

<https://www.cdc.gov/niosh/topics/falls/mastclimb.html>

PLAN PROVIDE TRAIN
Three simple steps to preventing falls

Join the Campaign to Stop Construction Falls!
www.stopconstructionfalls.com

#StandDown4Safety

PROPER FIT FOR WOMEN IN CONSTRUCTION

June 2020

In 2019, **10%** of the construction workforce women were poorly fitted fall protection harnesses are ineffective and can cause fall injuries.

PERSONAL PROTECTIVE EQUIPMENT (PPE) is available in sizes and designs that fit women.

EMPLOYERS SHOULD provide all workers with **PROPERLY FITTING PPE**.

TAKE ACTION AND PURCHASE PPE THAT FITS APPROPRIATELY

Construction PPE for women: <http://bit.ly/2Q1A7ko>

Manufacturers of PPE for women: <http://bit.ly/2TVtHV2>

PLAN PROVIDE TRAIN
Three simple steps to preventing falls

Join the Campaign to Stop Construction Falls!
www.stopconstructionfalls.com

#StandDown4Safety

Plan. Provide. Train.

Protect your employees by:

PLANNING...

- Identify fall hazards on the jobsite
- Decide how to correct the hazards and prevent a fall
- Assign a person to make sure the hazards are corrected

PROVIDING...

Equipment to prevent falls:

- Personal fall arrest systems
- Access equipment (aerial lifts, ladders, etc.)
- Guardrails
- Other appropriate fall prevention equipment

TRAINING...

- On the use of fall protection equipment
- What to do if someone falls

Learn more about how to create a fall protection plan for your company at <https://tinyurl.com/fall-protection-plan>

PLAN PROVIDE TRAIN
Three simple steps to preventing falls

Join the Campaign to Stop Construction Falls!
www.stopconstructionfalls.com

#StandDown4Safety

July 2020

<https://stopconstructionfalls.com/infographics/>

Co-Branded Infographics

What Can You Do Today to Prevent a Fall?

Protect yourself and your crew by following these tips.

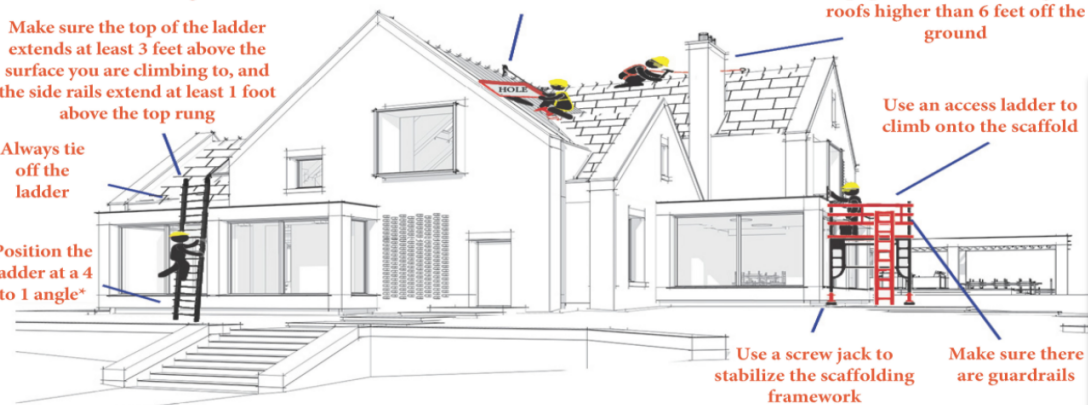
Cover holes with at least 3/4 inch plywood, oriented strand board or other cover that supports at least twice the weight of workers and materials, and secure the wood with nails or screws

Always use fall protection equipment when working on roofs higher than 6 feet off the ground

Make sure the top of the ladder extends at least 3 feet above the surface you are climbing to, and the side rails extend at least 1 foot above the top rung

Always tie off the ladder

Position the ladder at a 4 to 1 angle*



Join the Campaign to Stop Construction Falls!
www.stopconstructionfalls.com



*Use the free NIOSH ladder app to determine the correct angle: <https://www.cdc.gov/niosh/topics/falls/mobileapp.html>

#StandDown4Safety

July 2020

<https://stopconstructionfalls.com/infographics/>



Working at Heights: Ladders

Between 2015 – 2017, 1 out of 4 fall-related deaths was from a ladder.

If you must use a ladder, always:

- Check the ladder before you use it! If you see damage, tag it "do not use" and ask for another ladder.
- Make sure the ladder will support you and your belt – check its duty rating.
- Set the ladder on a solid, stable, base.
- Keep three points of contact with the ladder to stay balanced.
- Face the ladder when moving up or down.



When using...

An Extension Ladder:

- Set the ladder at the correct 4:1 angle.*
- Tie off and secure the top and bottom of the ladder, or use another worker.
- Extend the ladder at least 3 feet past the level you'll be climbing to and the side rails at least 1 foot past the top rung.

A Step Ladder:

- Never stand on the top step or very top of the ladder.
- Always position the ladder close to your work to avoid overreaching.

PLAN PROVIDE TRAIN

Three simple steps to preventing falls.



Watch CPWR'S video, Safe Ladder Practices in Roofing: <https://youtu.be/Et9aeMdosms>

Join the Campaign to Stop Construction Falls!
www.stopconstructionfalls.com



*Use the free NIOSH ladder app to determine the correct angle: <https://www.cdc.gov/niosh/topics/falls/mobileapp.html>

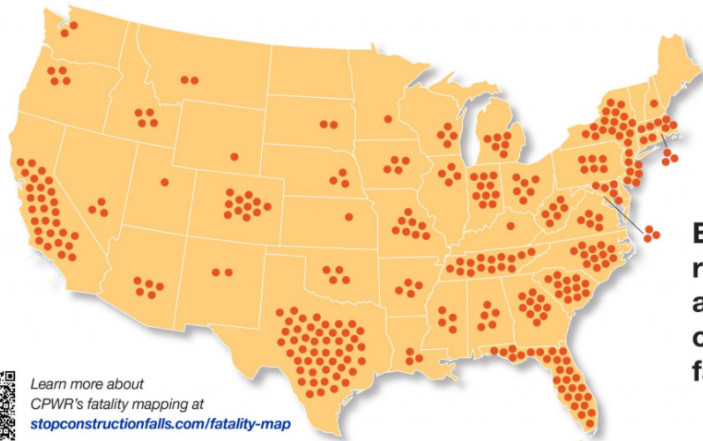
Source: The Construction Chart Book, Section 44, Chart 44c. <https://www.cpwr.com/chart-book-6th-edition-fatal-and-nonfatal-injuries-fatal-injuries-falls-lower-level-construction>

#StandDown4Safety

July 2020

Co-Branded Infographics

Did you know that falls are the leading cause of death in construction?



Each dot represents a fatal construction fall in 2018



Learn more about CPWR's fatality mapping at stopconstructionfalls.com/fatality-map

Join the Campaign to Stop Construction Falls!
www.stopconstructionfalls.com

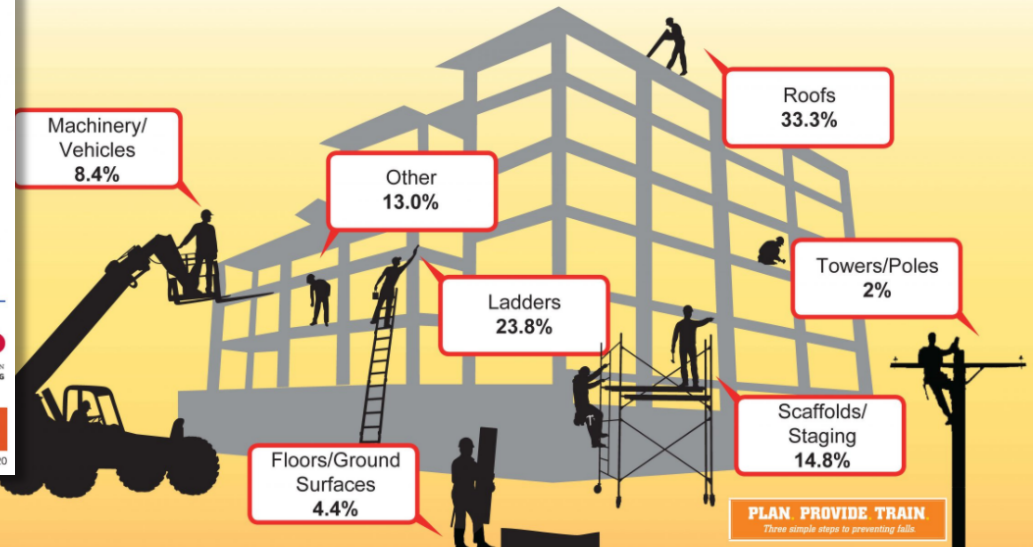


#StandDown4Safety

July 2020



Causes of DEATH from FALLS



PLAN. PROVIDE. TRAIN.
Three simple steps to preventing falls.

Join the Campaign to Stop Construction Falls!

www.stopconstructionfalls.com



Source: Total=1,533 deaths (2011-2015) The Construction Chart Book, Page 44, Chart 44c. <https://www.cpwrr.com/chart-book-8th-edition-fatal-and-nonfatal-injuries-fatal-injuries-falls-lower-level-construction>
Image Source: Clipart Library. Telephone Pole Cliparts #2924642. <http://clipart-library.com/clipart/1540874.htm>

#StandDown4Safety

July 2020

<https://stopconstructionfalls.com/infographics/>

Webinars & Podcasts

Official Stand-Down Kickoff Webinar -- Monday Sept 14, 1pm ET featuring:

- Loren Sweatt, Principal Deputy Assistant Secretary of Labor for Occupational Safety and Health
- Scott Ketcham, Director, OSHA Directorate of Construction
- John Howard, MD, Director, NIOSH
- Scott Earnest, PhD, Director, NIOSH Office of Construction Safety and Health
- Chris Trahan Cain, Executive Director, CPWR — The Center for Construction Research and Training

**1669 registered,
916 attended**



Register in advance for this webinar:



After registering, you will receive a confirmation information about joining the webinar.

Fall Prevention & Protection in the Roofing Industry

Introduction by: Scott Ketcham, Director, OSHA Directorate of Construction

Panel Presenters:

Thomas Shanahan, CAE, VP Enterprise Risk Management and Executive Education, National Roofing Contractors Association (NRCA)

Harry Dietz, Director, Enterprise Risk Management, NRCA

Rich Trewyn, Director, Enterprise Risk Management, NRCA

Thursday, April 16th, 2020

Fall Protection Q&A Panel

Introduction by: G. Scott Earnest, Acting Director for the Office of Construction Safety and Health, National Institute for Occupational Safety and Health (NIOSH)

Panel Presenters:

Thom Kramer, PE, CSP, LJB Inc. Principal & Z359 Accredited Standards Committee Chairman;

Dan Henn, VP of Operations at Reliance Fall Protection, Vice-Chairman of the ANSI/ASSP Z359 & Chairman of the Z359.14 Subgroup;

Adam Rubin, Senior Corporate Safety Manager with Zachry Group, member of the ANSI/ASSP Z359 Accredited Standards Committee & Vice-Chairman of the Z359.14 Subgroup;

Cory Gaye, Chair of ACIG's Infrastructure Safety Peer Group, and active end user voice at the Z359 and Z359.14 subcommittee meetings

Wednesday, March 4th, 2020

<https://stopconstructionfalls.com/training-and-other-resources/on-demand-webinars/>

2020 Stand-Down Activity Plan

STANDING DOWN FOR FALL SAFETY IN 2020: Ideas for Virtual or Socially Distanced Stand-Down Events

September 14-18th is the 7th annual National Safety Stand-Down to Prevent Falls in Construction – an opportunity to pause work on jobsites across the country and talk about fall safety with crews large and small. Much like work and life in general, however, your stand-down activities might look a little different during the pandemic this year. Below are several ideas for holding an event with employees virtually or in person at a safe distance. Be sure to follow the most [recent CDC guidelines](#) and [other guidelines for the construction industry](#) to protect yourself and others from the spread of COVID-19.

1. Host or Attend a Virtual Event...

- OPTION #1** – Use Zoom, Microsoft Teams, or another online platform to hold a meeting to review fall safety basics, conduct a training, or remind employees of company policies for fall prevention and protection.
- OPTION #2** – Attend a live webinar. OSHA, NIOSH & CPWR will host a [2020 Kick-Off Webinar Monday 9/14](#) additional events during the week, and OSHA's [Stand-Down calendar](#) lists virtual events open to the public.
- OPTION #3** – Hold a virtual meeting using an online platform to watch [an on-demand webinar or other video](#) such as pre-recorded webinars about joining the Stand-Down, roofer safety, fall rescue, and Q&A with a panel of ANSI Z-359 experts. Then use some time at the end for a live discussion.

2. Share short videos or podcasts...

Not enough time for a meeting or event? Share [short videos or podcasts](#) with your crew that can be viewed or listened to on a break or during the commute. Then talk about it for a few minutes at a morning meeting – but remember to stay 6 feet apart!

Check out [CPWR's YouTube playlist on falls](#), with new videos from NIOSH.

3. Conduct a Toolbox Talk or Fall Protection Demo

You can still do some of the activities you would do during any Stand-Down. Conduct a [toolbox talk](#), safety presentation, or fall protection demonstration, making sure workers are at least 6 feet apart and wearing face coverings.

4. Inspect, Clean, and Disinfect...

Ask workers to inspect equipment before use. Broken or damaged equipment should be tagged and removed.

Shared equipment can expose workers to diseases. Ask workers to clean and disinfect equipment during pre-shift inspections and when shared with other workers. Use products that meet [EPA's criteria for use against SARS-CoV-2](#) external icon, [diluted household bleach solutions](#) prepared according to the manufacturer's label for disinfection, or alcohol solutions that have at least 70% alcohol and are appropriate for the surface. Talk to your manufacturers and check the [CPWR COVID-19 Construction Cleaninghouse](#) for additional info.



5. Complete or Review Your Written Fall Protection Plan...

Do you have a written fall protection and rescue plan? If so, can it be improved? If not, use [this generic template](#) to create one for your jobsite. For small employers or those just beginning to plan for falls, [click here for a shorter, simpler plan](#) (also available in Spanish).

6. Hold a Family Poster Contest...

Ask workers to create a fall safety poster at home with their families – the exercise will reinforce the importance of job site safety and help workers associate it with coming home safe and healthy to their families. To make the contest virtual, ask each employee to snap a photo and post it to social media while tagging your company.

Don't forget to use [#StandDownSafety](#); then hang the posters at work.



7. Share Your Story...

Has fall protection saved your life? Send an email to falls@cpwr.com and tell us your story. We may publish or post it after talking to you so that others can learn from your first-hand experience.

8. Get a Certificate of Participation...

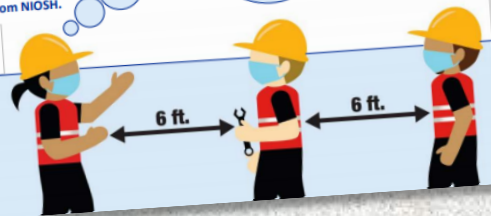
Visit [OSHA's website](#) to print a certificate.



For more Stand-Down resources, 2020 hardhat stickers, and materials to improve fall safety year-round, visit stopconstructionfalls.com

CPWR
THE CENTER FOR CONSTRUCTION
RESEARCH AND TRAINING

September 8th, 2020



<https://stopconstructionfalls.com/2020-stand-down-plan/>

<https://www.cpwr.com/wp-content/uploads/DataBulletin-Falls-Special-Issue-2020.pdf>

CPWR
THE CENTER FOR CONSTRUCTION
RESEARCH AND TRAINING

Data Bulletin

WWW.CPWR.COM

SEPTEMBER
2020

SPECIAL ISSUE

New Trends of Fatal Falls in the Construction Industry

Samantha Brown, MPH, Raina D. Brooks, MPH, Xiuwen Sue Dong, DrPH*

THIS ISSUE

In support of the 2020 National Safety Stand-Down to Prevent Falls in Construction, this special issue reports recent trends of fatal falls in the construction industry.

OVERVIEW

The seventh annual [National Safety Stand-Down](#) is taking place this month despite the COVID-19 pandemic. This event is part of the [National Campaign to Prevent Falls in Construction](#) that was launched in 2012 by the National Occupational Research Agenda (NORA) Construction Sector Council, CPWR – The Center for Construction Research and Training, the National Institute for Occupational Safety and Health (NIOSH), and the Occupational Safety and Health Administration (OSHA). The campaign aims to raise public awareness of fall hazards and to reinforce the importance of fall prevention. To support the campaign, this special issue of the Data Bulletin reports trends of fatal falls in the construction industry, highlighting changes in fatal falls to a lower level in recent years based on the most recent data. The fatality numbers were obtained from the U.S. Bureau of Labor Statistics (BLS) Census of Fatal Occupational Injuries (CFOI). Construction employment was estimated from the Current Population Survey (CPS). To calculate injury rates, employment was adjusted for the number of hours worked (full-time equivalent or FTE), assuming that full-time employees work 2,000 hours per year.

KEY FINDINGS

In 2018, the number of fatal falls in construction decreased to 340 from 389 in 2017 despite an increase in overall fatalities. *Chart 2*

The rate of fatal falls to a lower level in construction dropped to 2.8 per 100,000 full-time equivalent (FTE) workers in 2018, its lowest point since 2003.¹ *Chart 4*

Both the rate and number of fatal falls to a lower level in construction decreased consecutively in 2017 and 2018, dropping a total of 20.6% and 13.7%, respectively. *Chart 5*

The number of fatal injuries associated with the three primary sources of fall hazards (roofs, ladders, and scaffolds) all decreased from 2016 to 2018. *Chart 6a*

From 2016 to 2018, fatal falls to a lower level dropped 15.4% in the Roofing subsector, but increased 6.6% in Residential Building Construction.

NATIONAL SAFETY STAND-DOWN TO PREVENT FALLS IN CONSTRUCTION

SEPTEMBER 14–18, 2020



NORA Construction Falls Campaign/Stand-Down App

NORA Construction Sector Council



In Development



On April 26, 2012, NIOSH, OSHA, and CPWR – The Center for Construction Research and Training together launched a National Campaign to Prevent Falls in Construction. The Campaign seeks to raise awareness among workers and employers about common fall hazards in construction, and how falls can be prevented. The annual observance is marked nationwide by Safety Stand-Downs.

The Panel recommends that NIOSH **focus on developing software products (applications...)** to provide the construction industry safety and health tools that use technology and algorithms, allowing large numbers of construction employers, employees, and safety professionals to get construction safety assistance when needed.

Construction Panel's Summary Recommendations for Future Considerations	3
Recommendation 1: Continue to conduct basic and applied research	3
Recommendation 2: Increase r2p efforts.....	4
Recommendation 3: Develop software products and use technology.....	4
Recommendation 4: Research to effectively communicate and interact with small construction employers	5
Recommendation 5: Research on training and education	6
Recommendation 6: Research about safety and health programs	7
Recommendation 7: Research towards construction equipment that protects workers from hazards	8
Recommendation 8: Contribute to standards and influential documents.....	9
Recommendation 9: Develop and maintain partnerships.....	9
Recommendation 10: Evaluate and capitalize on the productivity effects of research and recommendations	10
Recommendation 11: More frequent reviews of project within the Program.....	11

NORA Construction Falls Campaign/Stand-Down App

Through a partnership with the NORA Construction Sector Council including the main partners for the National Campaign to Prevent Falls in Construction and the annual Stand-Down: NIOSH, CPWR, & OSHA will support the development of a mobile application.

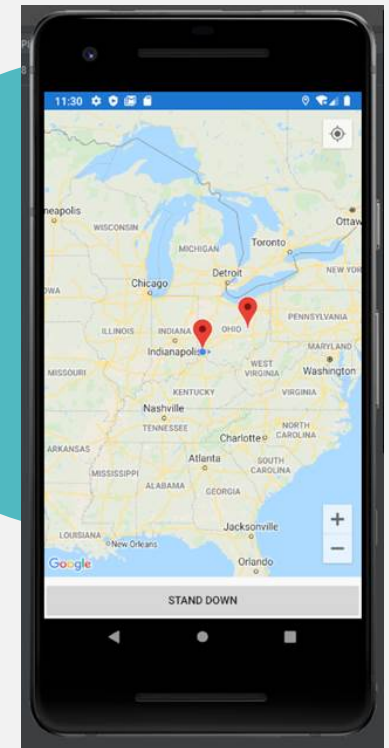
The app will feature a **“check-in” for the National Stand-Down** to Prevent Falls in Construction as well as **resources for construction employers and workers** on how to prevent falls in construction.

Some of the key features we'd like to include:

- Stand-down Check-in
- Resources to plan for a stand-down
- Targeted resources for employer vs. employee on falls from:
 - Ladders
 - Scaffolds
 - Roofs
 - General/Other
- Push notifications when new resources are developed
- Social media integration with badges/frames/live video feed #StandDown4Safety



Construction
Sector Council





- Activity 1- Better Reaching Small Employers
- Activity 2- Taking employers to the next level
- Activity 3- 'Forensics of Falls'
- Activity 4- Improving fall prevention programs
- Activity 5- Create a tool to assess & rate fall risk activities
- Activity 6- Ladder & scaffolds – increase awareness
- Activity 7- National Campaign to Prevent Falls in Construction
- Activity 8- Lowe's / Home Depot → Strategic Partnerships**

Strategic Partnership with Home Depot



Liberty Mutual[®]
INSURANCE





Milwaukee Tool & Home Depot

- Home Depot is letting Milwaukee Tool place POS safety bulletins.
- Milwaukee Tool is working with CPWR on content.
- Milwaukee Tool is starting with hard hat safety.



NAHB & Home Depot

 Construction
Sector Council



Home builders institute has a [major initiative](#) with Home Depot to help in education and bringing folks into this industry.

- Looking to train 20,000 workers over next 10 years
 - Pre-apprentice 12 week training
- Use this as an entry to have a broader discussion with Home Depot
- Sell idea of safety for workforce development
- Idea to pilot safety center at contractor desk: 'Quick cards' on roofing, framing, tool safety, silica, etc. What are the big projects they're selling and where does the safety information fit into their contractor desk?
 - both Home Depot and Lowes has targeted "pros", as opposed to "DIY'ers", with some specific tools, which can be found here: https://www.homedepot.com/c/professional_contractor and <https://www.lowesforpros.com/>

