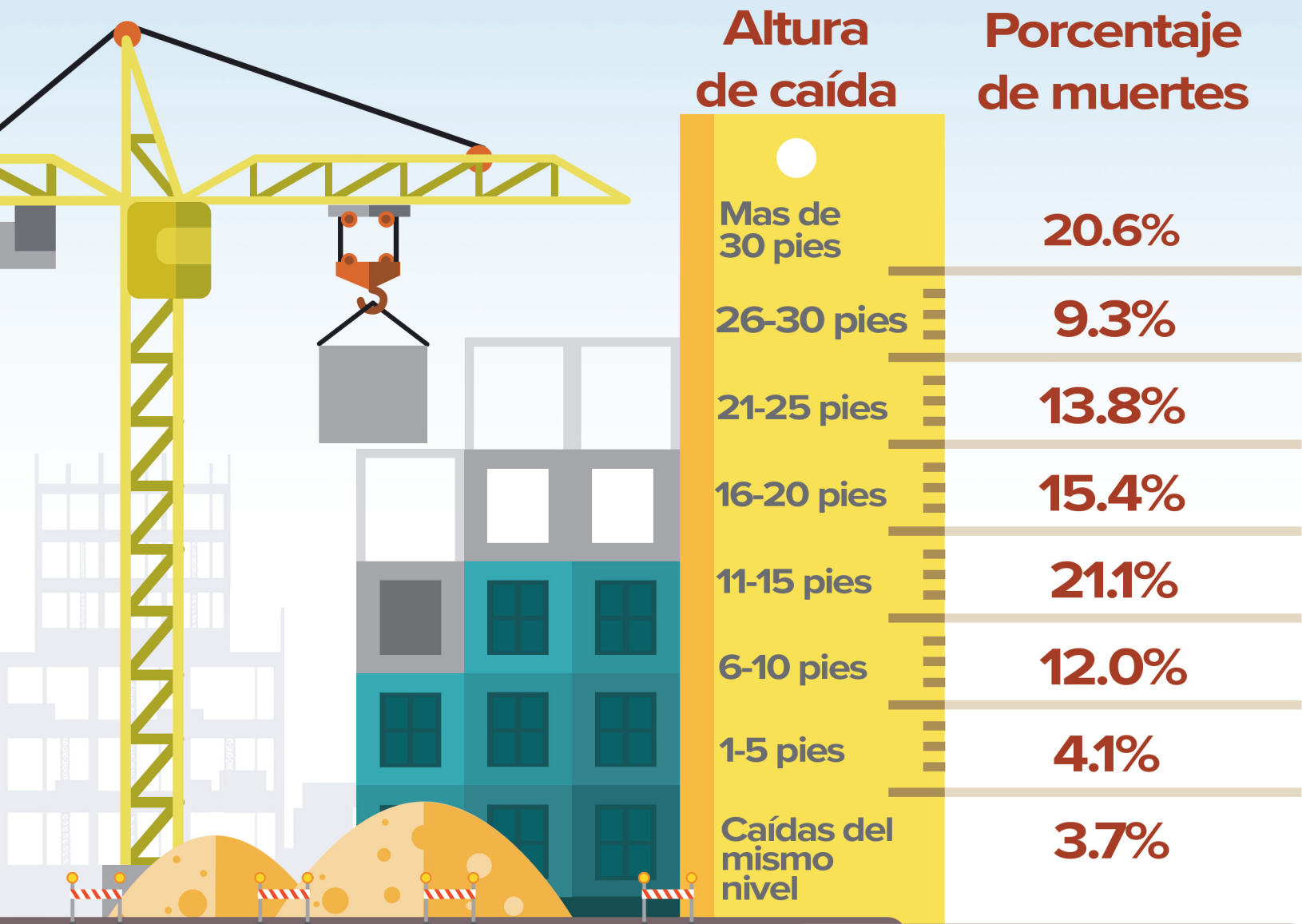


¿QUÉ ALTURA ES FATAL?



Puede que no estés muy alto del suelo, pero si te caes, podría ser mortal. ¡Casi 1 de cada 5 caídas fatales son desde menos de 10 pies!*



¡Unase a la campaña para acabar con las caídas en la construcción!
www.stopconstructionfalls.com



CPWR 
THE CENTER FOR CONSTRUCTION
RESEARCH AND TRAINING

*Between 2015-2017, 1,005 construction workers died from falls, with 199 fatalities occurring at 10 ft or less. 139 deaths without height information were excluded.
Source: CPWR. (2019). Quarterly Data Report Q2 2019: Trends of Fall Injuries and Prevention in the Construction Industry. <https://www.cpw.com/wp-content/uploads/publications/Quarter2-QDR-2019.pdf>
Fatal injury data were generated by CPWR's Data Center with restricted access to the BLS CFOL micro data. The views expressed here do not necessarily reflect the views of the BLS.