

Construction Update

Scott C. Ketcham MPA, CSP
Director, Directorate of Construction
Occupational Safety and Health Administration



Agenda

- General update
- Addition to Directorate of Construction Staff
- Agency Priority Goal
- Standards, Directives
- Enforcement
- Construction related Alliance activity

Erin Gilmore

Director – Office of Construction Services



- Erin Gilmore was the Area Director in Region 3's Wilmington Area Office in Wilmington, DE for six years prior to coming to the National Office. She has previously worked as a safety manager for the United States Coast Guard and as a mechanical engineer for the United States Navy's Military Sealift Command. She holds CSP and CHMM certifications. She has a Master's of Science from Old Dominion University and a Master's of Public Health from Eastern Virginia Medical School. Her federal service includes eighteen years of combined active duty and reserve service as a Surface Warfare Officer in the United States Navy.

Office of Construction Services Highlights

- Enforcement
 - Significant Case Review
 - Field Enforcement Assistance
 - Letters of Interpretation
- Outreach
 - Fall Stand Down
 - Trenching Stand Down
 - Safe and Sound Week
- ACCSH
- NORA
- NABTU
- CPWR
- NIOSH
- Trade Associations

Dr. Alan Lu

Director – Office of Engineering Services

- Dr. Alan Lu joined the Office of Engineering Services as a senior Civil Engineer in 2016. He received his Ph.D. in Geotechnical and Materials Engineering from Iowa State University. Dr. Lu is an experienced and energetic researcher and engineer. He has had over twenty years of experience in the professional practice of civil engineering. He has conducted numerous construction incident investigations and published many peer-reviewed papers and technical reports.

Office of Engineering Highlights

- Enforcement
 - Forensic Engineering Analysis
 - Structural Assistance
 - Geotechnical Assistance
- Outreach
 - OSHA Training Institute Courses

OSHA Trenching Initiative

- Agency Priority Goal (APG): Reducing trenching hazards through enforcement and compliance assistance
- National Emphasis Program for Trenching
- New and updated trenching and excavation safety and training resources
- Publicity, outreach, stakeholder support
- Trench Safety Stand Down and other events

Preventing Trenching Incidents

- DOL's Strategic Plan identifies trenching hazards as an agency priority.
- OSHA's goal is to increase the number of corrected trenching hazards through enforcement and consultation.



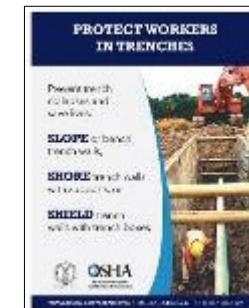
Excavations
in Construction
[English](#)
[Spanish](#)



5 Things You
Should Know
To [Stay Safe](#)
in a Trench



sticker

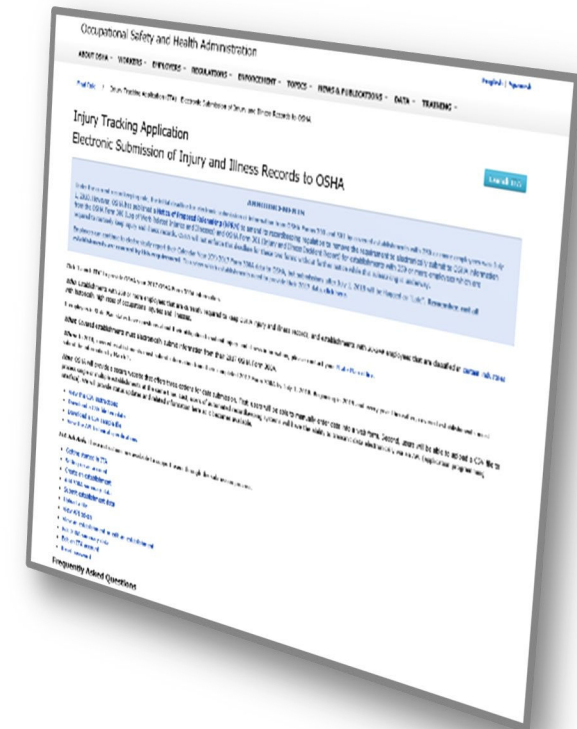


poster



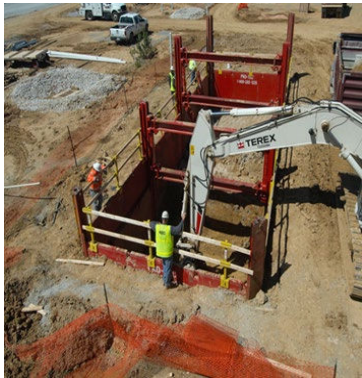
Construction Regulatory Activities

- Tech Corrections - Issued in February
- Railroad Cranes - Final Rule in effect
- Crane Amendments - NPRM Clearance
- Communication Towers - NPRM
- Welding in Confined Spaces - NPRM
- PPE in Construction - NPRM
- Powered Industrial Trucks - NPRM (ACCSH)
- Hazard Communication - NPRM



Directives

- New Excavation Directive
- New Small Unmanned Aerial System (Drone) Directive
- Updating of Crane Directive for Operator Certification



OSHA Announces \$2,496,768 In Coronavirus Violations

November 6, 2020

WASHINGTON, DC – Since the start of the coronavirus pandemic through Oct. 29, 2020, the U.S. Department of Labor’s Occupational Safety and Health Administration (OSHA) has issued citations arising from 179 inspections for violations relating to coronavirus, resulting in proposed penalties totaling \$2,496,768.

OSHA inspections have resulted in the agency citing employers for violations, including failures to:

- Implement a [written respiratory protection program](#);
- Provide a medical evaluation, respirator fit test, training on the proper use of a respirator and personal protective equipment;
- [Report](#) an injury, illness or fatality;
- Record an injury or illness on OSHA [recordkeeping forms](#); and
- Comply with the [General Duty Clause](#) of the Occupational Safety and Health Act of 1970

www.osha.gov/coronavirus



Construction Inspection Data

Top 10 Violations in Construction (OIS 10/16/20)

1) 1926.501 - Fall Protection	6) 1926.20 - General S&H Provisions
2) 1926.451 - Scaffolding	7) 1926.100 - Head Protection
3) 1926.1053 - Ladders	8) 1926.651 - Excavation Requirements
4) 1926.503 - Fall Protection Training	9) 1910.1200 - Hazard Communication
5) 1926.102 - Eye & Face Protection	10) 1926.502 - Fall Protection Systems Criteria & Practices

Construction Inspection Data Cont.

Top 10 Violations in Construction FY20 Data (OIS 10/16/20)

Standard	Total Violations	Serious Violations	Willful Violations	Repeat Violations
1926.501 - Fall Protection	5454	4317	150	850
1926.451 - Scaffolding	2549	2355	11	118
1926.1053 - Ladders	2138	1912	11	109
1926.503 - Fall Protection Training	1626	1156	9	87
1926.102 - Eye & Face Protection	1374	1209	8	115
1926.20 - General S & H Provisions	897	730	5	65
1926.100 - Head Protection	785	699	1	50
1926.651 - Excavation Requirements	703	564	7	34
1910.1200 - Hazard Communication	662	463	0	21
1926.502 - Fall Protection Systems Criteria & Practices	650	562	0	12

FY 2021 OSHA National Outreach Events

- **Stand-Up 4 Grain Safety Week** (Mar. 29 – Apr. 2, 2021)
- **National Work Zone Awareness Week** (Apr. 26-30, 2021)
- **Fall Prevention Stand-Down** (May 2021)
- **Heat Illness Prevention** (May 21, 2021)
- **Trench Safety Stand-Down** (June 2021)
- **Safe + Sound Week** (August 2021)

Construction Related Alliance Activity

- Directorate of Cooperative and State Programs
 - Tina Jones

Alliance Program: Creates Positive Relationships

Between:

- OSHA National, Regional, or local Area Office
- Employer and worker groups (trade or professional associations, unions, consulates, community and faith-based groups, and government agencies)

To:

- Build trust
- Encourage information sharing
- Promote education
- No exemptions for participants



In 2019, National Alliances helped OSHA reach millions of employers and workers

- Conducted >1,700 **dissemination activities**, reaching >9.5 million people
- Provided **billboard space** to support OSHA's outreach initiatives
- Conducted >250 **events or training activities** reaching >28,000 people
- Provided 21 **technical training sessions** for 308 representatives from federal OSHA, state OSHA agencies, and On-Site Consultation

Construction Alliances

- Altec Industries
- American Chemistry Council
- AIHA
- American Pipeline Contractors Association
- ASSP
- American Staffing Association
- BCSP
- CareerSafe
- CPWR – The Center for Construction Research and Training
- Independent Electrical Contractors
- International Safety Equipment Association
- Lamar Outdoor Advertising
- National Association of Women in Construction
- NIOSH
- NSC
- Roadway Work Zone Safety and Health Partners
- Scaffold & Access Industry Association
- Sealant Waterproofing and Restoration Institute
- Society for Maintenance and Reliability Professionals
- Theater, Stage, and Moving Pictures Alliance



Questions?



www.osha.gov

DOC: 202-693-2020

