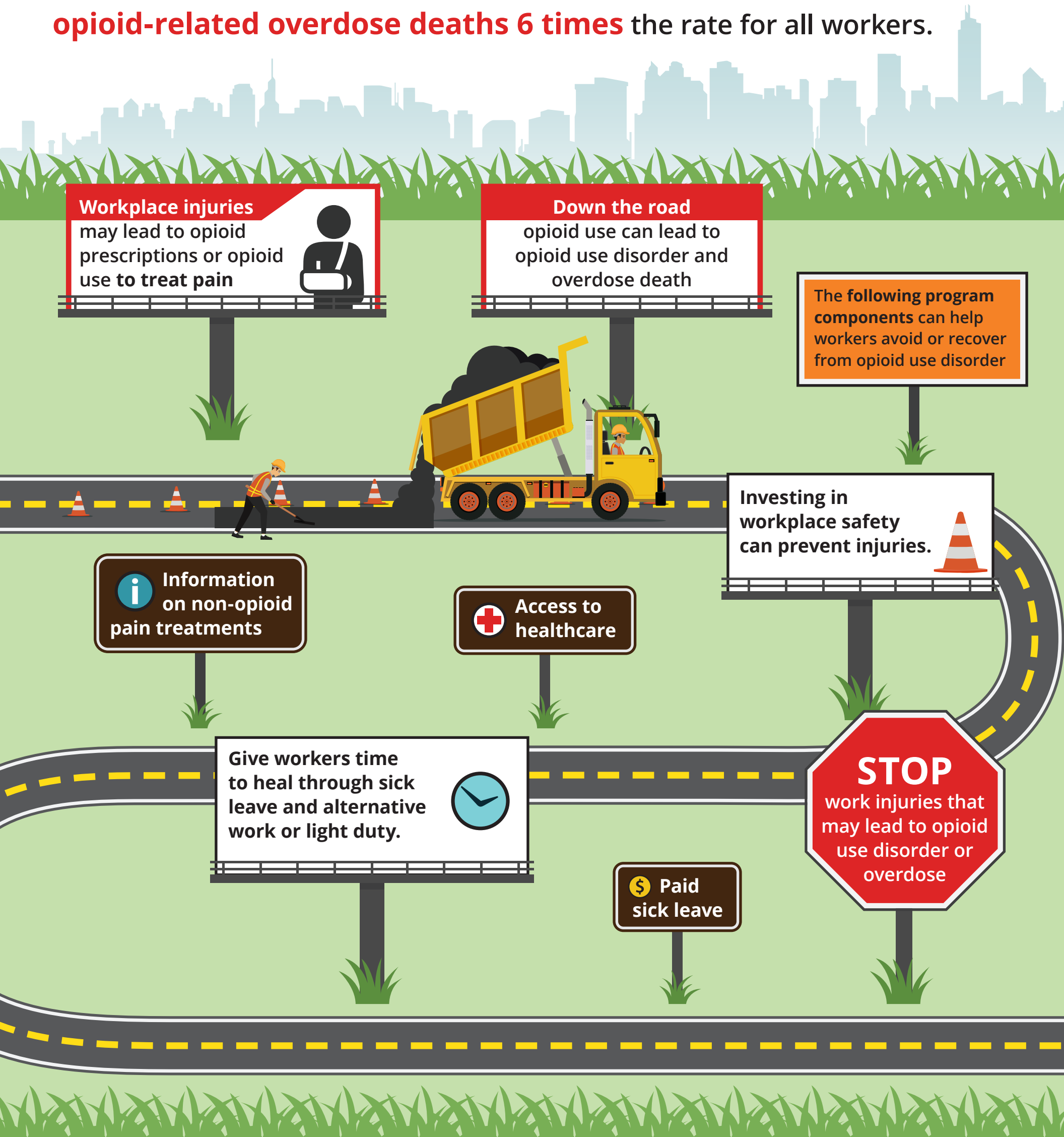


PREVENTION GOES A LONG WAY — INVEST IN WORKPLACE SAFETY

CONSTRUCTION INJURIES CAN LEAD TO OPIOID USE DISORDER AND OVERDOSE DEATHS

April 2023

Construction workers have been shown to have a rate of **opioid-related overdose deaths 6 times** the rate for all workers.



Invest in workplace safety to prevent injuries that may lead to opioid use down the road.



**Centers for Disease Control
and Prevention**
National Institute for Occupational
Safety and Health

Reference

Massachusetts Department of Public Health [2021]. Opioid-related Overdose Deaths in Massachusetts by Industry and Occupation, 2016-2017, <https://www.mass.gov/doc/opioid-related-overdose-deaths-by-industry-and-occupation-2016-2017-0/download>

Additional Resources

Additional Resources
Opioids in the Workplace
Resources to Prevent Opioid Deaths in Construction
Opioid Management Guidelines for the Construction Trades