

Directorate of Construction Update

Timothy S. Irving, CSP

**Deputy Director, Directorate of Construction
Occupational Safety and Health Administration**



Agenda

- Directorate of Construction
 - Office of Engineering Services
 - Dr. Lu
 - Recent investigations
- Directives Update
 - Crane Operators Certification
 - Vernon Preston
 - Small Unmanned Aircraft Systems
 - Michael Payne
- Enforcement Update
 - FY 21 Inspection numbers
- Suicide Prevention in Construction



OTI #3010 – Trenching and Excavating Course

Directorate of Construction

- **OCS (Construction Services)**: Field enforcement assistance, Compliance Assistance, Interpretations, ACCSH
- **OES (Engineering Services)**: Forensic engineering analysis, Structural and Geotechnical Assistance
- **OCSG (Construction Standards and Guidance)**: Develop and promulgate Construction standards; Directives; Interpretations and other guidance products

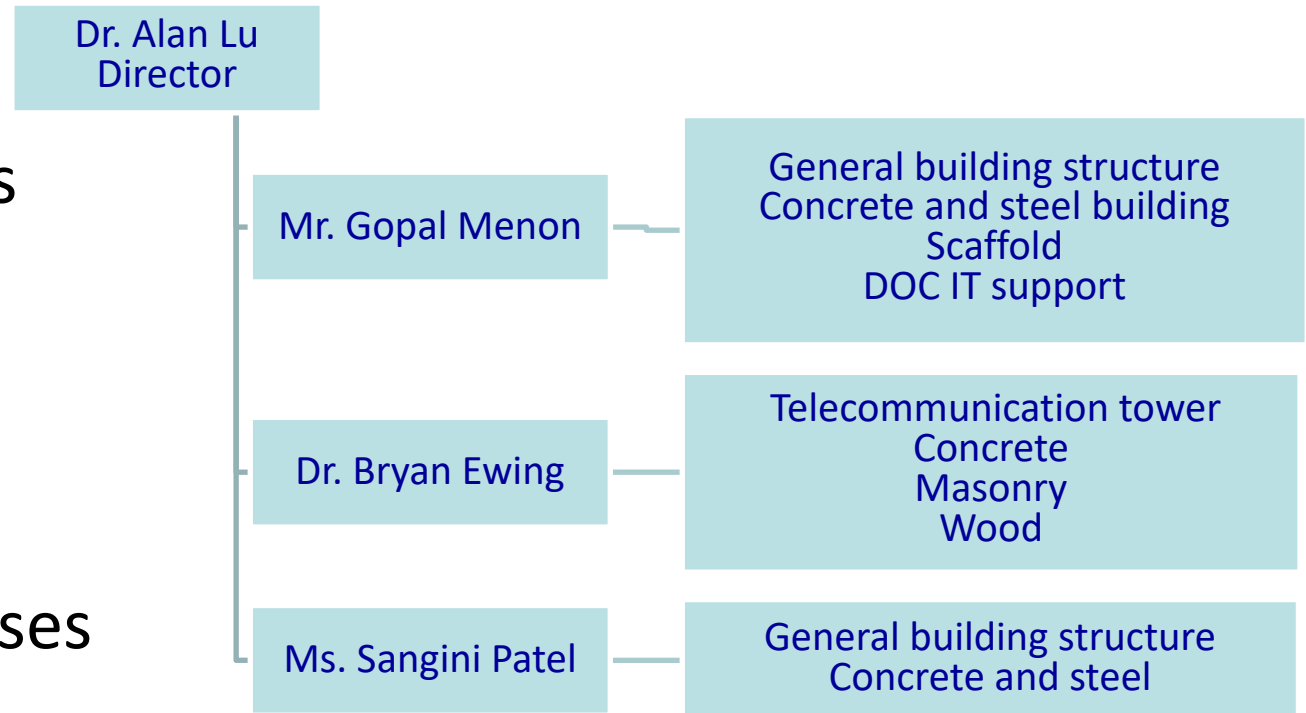
Office of Engineering Services Highlights

- Enforcement

- Forensic Engineering Analysis
- Structural Assistance
- Geotechnical Assistance

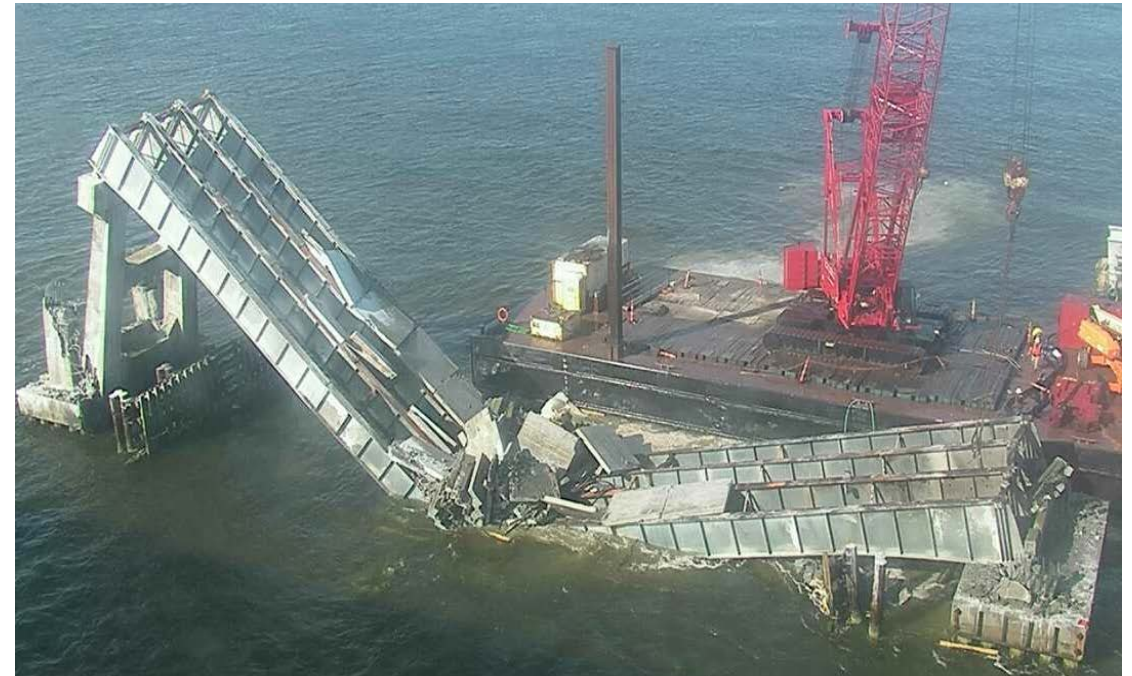
- Outreach

- OSHA Training Institute Courses



Recent Investigations

- April 14, 2021, Bonner Bridge Collapse in N. Carolina
- One fatality



Recent Investigations

- October 19, 2021, Collapse of a Bridge Span under Demolition, Newton County, GA
- One fatality



Recent Investigations

- November 8, 2021, Partial Collapse of Wood Roof Trusses during Construction of Dollar General Store, Orange City, Florida
- One fatality



Recent Outreach Activities

- OTI Trench and Excavation Safety Courses in MN and WY



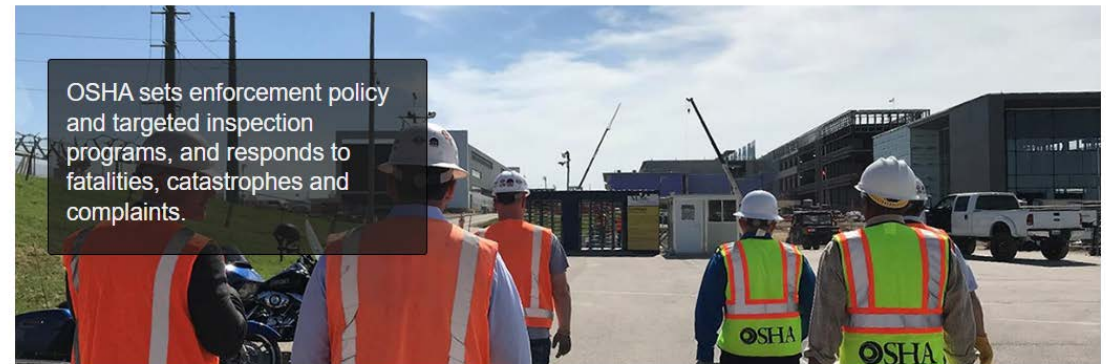
Policy and Guidance

Types of Policy and Guidance

- Enforcement Memos
- Compliance Directives
- Letters of Interpretation
- Severe Violators Enforcement Policy

OSHA's Enforcement Webpage

Enforcement



Inspections and Penalties

- About Inspections
 - Inspections Fact Sheet
 - Inspection Process Video **NEW**
- Targeted Enforcement
 - National Emphasis Programs
 - Local Emphasis Programs
- Penalties

Policy and Guidance

- Enforcement Memos
- Compliance Directives
- Letters of Interpretation
- Severe Violators
- OSH Act

Compliance Assistance

- Industry Resources
- Employer Help
- Compliance Assistance Specialists
- On-Site Consultation Program



What are Directives?

Statements of policy and procedure on a single subject

Different Types

- Compliance Directives (CPL)
- Training Directives (TED)
- Administrative (ADM)
- Standards (STD)

OSHA Directives



The screenshot shows the OSHA website's navigation and content area. At the top, there is a red header with the United States Department of Labor logo and social media icons. Below this is a grey navigation bar with dropdown menus for OSHA, STANDARDS, ENFORCEMENT, TOPICS, HELP AND RESOURCES, and NEWS, along with a search box labeled 'SEARCH OSHA'. The main content area is titled 'Directives - Directive Number' and contains a definition of OSHA Directives, a paragraph of instructions, and a paragraph explaining OSHA Compliance Directives (CPLs). At the bottom, there is a search filter bar with options for Publication Date, Directive #, NEP, Regional LEP, State Plan Adoption, and Advanced Search.

UNITED STATES
DEPARTMENT OF LABOR

Occupational Safety and Health Administration

CONTACT US FAQ A TO Z INDEX ENGLISH ESPAÑOL

OSHA ▼ STANDARDS ▼ ENFORCEMENT TOPICS ▼ HELP AND RESOURCES ▼ NEWS ▼

SEARCH OSHA

Enforcement / Directives - Directive Number

Directives - Directive Number

OSHA Directives are written statements of policy and procedure on a single subject, which generally include implementation guidelines and responsibilities for the Agency's affected offices.

Instructions available here are not standards, regulations, or any other type of substantive rule. No statement in these Instructions should be construed to require the regulated community to adopt any practices, means, methods, operations, or processes beyond those which are already required by the Occupational Safety and Health Act of 1970 (OSH Act) (29 USC § 668) or standards and regulations promulgated under the OSH Act.

OSHA Compliance Directives (CPLs) are written instructions providing compliance policies and enforcement procedures on certain subjects, such as compliance with and enforcement of specific OSHA standards, or procedures to implement specific emphasis programs to target particular hazards. These policies are intended to ensure uniform enforcement by OSHA's field offices.

Publication Date Directive # NEP Regional LEP State Plan Adoption Advanced Search

Small Unmanned Aerial System

CPL 02-01-169 Effective 12/22/21

- Collect evidence
 - including in areas that are inaccessible or pose a safety risk to inspection personnel
- Technical assistance in emergency situations
- Compliance assistance activities
- Training activities

OSHA Instruction

| | |
|---|--|
| DIRECTIVE NUMBER: CPL 02-01-169 | EFFECTIVE DATE: December 22, 2021 |
| SUBJECT: OSHA's Use of Small Unmanned Aircraft Systems | |

ABSTRACT

Purpose: This Instruction, OSHA's Use of Small Unmanned Aircraft Systems, provides policies and procedures for the continued use of Small Unmanned Aircraft Systems ("SUAS" or "drones") by OSHA.

Scope: This Instruction applies OSHA-wide.

References: OSHA Memorandum for Regional Administrators, *OSHA's use of Unmanned Aircraft Systems in Inspections*, May 18, 2018.

Cancellations: N/A

State Impact: This Instruction describes a Federal Program for which adoption by State Plans is not required but encouraged (see [Section VII](#)).

Crane Directive Updates

02/11/2022

- Amends Cranes and Derricks Directive, CPL 02-01-063
 - Only revises the existing section on Operator Certification
 - Other sections of the directive are unchanged
- Directive does not create any new obligations on employers
- Provides OSHA enforcement personnel with guidance on conducting inspections and citation policies
 - Although the information in the directive is developed for OSHA enforcement personnel, the guidance and explanation can be helpful for employers



Crane Outreach and Compliance Assistance

- Updated Small Entity Compliance Guide for the Final Rule for Cranes and Derricks in Construction
 - Will provide concise statement of crane operator training, certification, and evaluation requirements
 - Will answer frequently asked questions on certification testing and payment for certification
- Developing an FAQ to address questions OSHA has received about the status of accreditation agencies

OSHA OIS Inspection Data

Overall Data (10/1/20 – 9/30/21)

| | |
|-------------------------------|---------|
| Total Inspections | 24,289 |
| Total Violations Issued | 31,782 |
| Average “Serious” Penalty | \$5,468 |
| % Serious, Willful, or Repeat | 80.63% |
| % Other-than-Serious | 19.33% |

OSHA OIS Inspection Data Cont.

| Overall Data (10/1/20 – 9/30/21) | |
|---|--------|
| Construction | 52% |
| Other Industries | 48% |
| Programmed | 10,592 |
| Un-Programmed | 13,697 |
| Fatalities/Catastrophes Inspected | 1,424 |
| Avg. Hrs/Safety Inspection | 22.3 |
| Avg. Hrs/Health Inspection | 36.4 |

OSHA OIS Inspection Data Cont.

Top 10 Violations in Construction (10/1/20 – 9/30/21)

| Standard | Total Violations | Serious Violations | Willful Violations | Repeat Violations |
|---|------------------|--------------------|--------------------|-------------------|
| 1926.501 - Fall Protection | 5,177 | 4,182 | 153 | 749 |
| 1926.1053 - Ladders | 1,976 | 1,795 | 7 | 95 |
| 1926.451 - Scaffolding | 1,878 | 1,727 | 12 | 70 |
| 1926.503 - Fall Protection Training | 1,627 | 1,065 | 5 | 121 |
| 1926.102 - Eye & Face Protection | 1,437 | 1,262 | 23 | 122 |
| 1925.100 - Head Protection | 807 | 729 | 8 | 47 |
| 1926.20 - General S & H Provisions | 797 | 628 | 6 | 72 |
| 1926.453 - Aerial Lifts | 520 | 470 | 0 | 22 |
| 1910.651 - Excavation Requirements | 503 | 423 | 2 | 27 |
| 1926.502 - Fall Protection Systems Criteria & Practices | 497 | 432 | 3 | 11 |

Suicide Prevention in the Workplace

Get help now.

- If you're having trouble coping with work-related stress, talk with someone who can help.
- Call 1-800-273-8255
- Para español 1-888-628-9454
- Online chat
suicidepreventionlifeline.org/chat



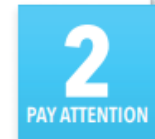
Suicide Prevention 5 Things You Should Know

Suicide is a leading cause of death among working-age adults in the United States. It deeply impacts workers, families, and communities. Fortunately, like other workplace fatalities, suicides can be prevented. Below are 5 things to know about preventing suicide.



Everyone can help prevent suicide.

Mental health and suicide can be difficult to talk about—especially with work colleagues—but your actions can make a difference. When you work closely with others, you may sense when something is wrong.



Know the warning signs of suicide.

There is no single cause for suicide but there are warning signs. Changes in behavior, mood, or even what they say may signal someone is at risk. Take these signs seriously. It could save a life.



Ask "Are you okay?"

If you are concerned about a coworker, talk with them privately, and listen without judgment. Encourage them to reach out to your Employee Assistance Program (EAP), the human resources (HR) department, or a mental health professional.



If someone is in crisis, stay with them and get help.

If you believe a coworker is at immediate risk of suicide, stay with them until you can get further help. Contact emergency services or the National Suicide Prevention Lifeline.



Suicide prevention resources are available.

- Call the National Suicide Prevention Lifeline at 1-800-273-TALK (8255), or text "TALK" to 741741.
- Visit the American Foundation for Suicide Prevention (www.afsp.org) to learn more about suicide risk factors, warning signs, and what you can do to help prevent suicide.



OSHA Occupational Safety and Health Administration

1-800-321-OSHA (6742)
TTY 1-877-889-5627
osha.gov/preventingsuicides



CCWM Inaugural conference, Denver, CO May 2022



Approximately 220
attendees

CWM Sessions

SCHEDULE

Working Minds
Suicide Prevention in the Workplace

Wednesday, May 18th
12:30pm-4:55pm
Main Room

- **12:30-1:10pm:** Roundtable Discussion #1: Rearview Mirror
- **1:15-2:10pm:** Breakout Session: Training: "Construction Working Minds" - Lessons Learned from Implementing a Brief Construction-Specific Suicide Prevention Training
 - Matt Mishkind, Ph.D. & Alex Yannacone of the Johnson Depression Center
- **2:15-3:10pm:** Breakout Session: Construction-Specific Mental Health & Well-Being Care
 - Dan Carlin, MD, JobSiteCare
 - Rich Jones, Heritage CARES
 - Brand Newland, Goldfinch Health
- **3:15-3:50pm:** Roundtable Discussion #2: Five Year Vision & 2022 Punch List
- **3:55-4:10pm:** Recognition and Awards
- **4:10-4:55pm:** Closing Keynote - Brent Darnell "Primal Safety"

For full schedule, download the YAPP app and use Code CWM2022

Yapp

SCHEDULE

Working Minds
Suicide Prevention in the Workplace

Wednesday, May 18th
1:15pm-3:10pm
Breakout Room #2

- **1:15-2:10pm:** Breakout Session: Training: Raising Awareness and Fighting "Stigma": Effective Communication Strategies
 - Sally Spencer-Thomas, Psy.D., United Suicide Survivors International
- **2:15-3:10pm:** Breakout Session: Responding to Mental Health Emergencies at Work
 - Sarah Gaer, United Suicide Survivors International
 - Lisa Desai, Mindwise
 - Sally Spencer-Thomas, Psy.D., United Suicide Survivors International

For full schedule, download the YAPP app and use Code CWM2022

Yapp

SCHEDULE

Working Minds
Suicide Prevention in the Workplace

Wednesday, May 18th
1:15pm-3:10pm
Breakout Room #1

- **1:15-2:10pm:** Breakout Session: Training: Peer Support in Construction
 - Eduardo Vega, M.Psy./Alliance Institute of Humannovations
 - Ben Cort, Speaker and Consultant
 - Justin Bradshaw, Organizer Local 49, SMART Union
- **2:15-3:10pm:** Breakout Session: Digital Health and Construction: Man Therapy - When it comes to suicide prevention, the best defense is a good offense.
 - Thomas Vossler & Nathaan Demers, Grit Digital Health & Cactus

For full schedule, download the YAPP app and use Code CWM2022

Yapp

Thanks to our Sponsors

Visionary

Community Builder

Speaker

Continual Updates

- Visit OSHA's website to sign up to receive OSHA information:
 - QuickTakes biweekly newsletter **(287,000+ subscribers)**
 - Tip of the Day **(33,700+ subscribers)**
 - www.osha.gov/contactus
- Follow OSHA on social media
 - Twitter: @OSHA_DOL **(21,500+ followers)**
 - Facebook: Follow the Department of Labor page
- YouTube
 - www.youtube.com/user/USDepartmentofLabor

Questions?



www.osha.gov

DOC: 202-693-2020



Additional slide information

Crane Directive Update

- Cranes and Derricks Directive, CPL 02-01-063
 - Only revises the existing section on Operator Certification
 - Other sections of the directive are unchanged
- Directive does not create any new obligations on employers
- Provides OSHA enforcement personnel with guidance on conducting inspections and policy on citing violations of the standard
 - Although the information in the directive is developed for OSHA enforcement personnel, the guidance and explanation can be helpful for employers

Crane Directive Update Cont.

Directive addresses the following questions regarding enforcement:

- When to initiate an inspection into an operator's training, certification, and evaluation
- How to approach an inspection involving multi-purpose equipment and multi-employer worksites
- How to determine whether the operator has received training that meets the requirements of the standard



Crane Directive Update Cont.

Additional questions addressed by the directive:

- What steps to take when inspecting the certification/license of an operator
- How to inspect whether a license meets the federal floor
- How to address certification concerns such as fraudulent certifications or testing organizations not meeting requirements



Crane Directive Update Cont.

Additional questions by the directive:

- When an employer would need to conduct additional evaluations for an operator
- How to distinguish between violations of the operator evaluation requirements and other sections of Subpart CC

