



**National
Occupational
Research Agenda**

NORA Construction Sector Council

Fall Prevention Workgroup

Chair: Tom Shanahan, NRCA



June 8, 2022

2022 Stand-Down to Prevent Falls in Construction

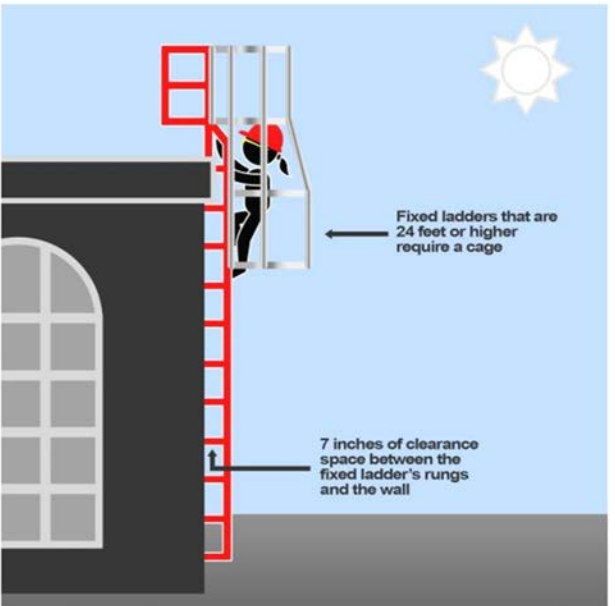
- 🛑 Produced materials in English and Spanish to support 2022 Stand-Down events including:
 - 🛑 2022 Stand-Down Social Media Guide (Messages for Twitter, Facebook, LinkedIn, & Instagram)
 - 🛑 2022 Stand-Down Plan (activity suggestions for participation)
- 🛑 NORA Falls WG members provided feedback on these and the following materials



2022 Stand-Down Materials: New Toolbox Talks

CPWR [] TOOLBOX TALK THE CENTER FOR CONSTRUCTION RESEARCH AND TRAINING

Fixed Ladders



Fixed ladders that are 24 feet or higher require a cage

7 inches of clearance space between the fixed ladder's rungs and the wall

- ▶ Do not assume a ladder being permanently attached to a structure means it is safe
- ▶ Inspect fixed ladders for damage every time you use them and tag the ladder "Do not use" if damaged. Tell your supervisor, foreman, or competent person.
- ▶ Always confirm that there is 7 inches of horizontal clearance space behind rungs for safe foot placement

©2022, CPWR-The Center for Construction Research and Training. All rights reserved. CPWR is the research and training arm of NABTU. Production of this document was supported by cooperative agreement OH 000762 from the National Institute for Occupational Safety and Health (NIOSH). The contents are solely the responsibility of the authors and do not necessarily represent the official views of NIOSH.

CPWR []
THE CENTER FOR CONSTRUCTION
RESEARCH AND TRAINING

CPWR [] TOOLBOX TALK THE CENTER FOR CONSTRUCTION RESEARCH AND TRAINING

Walking/Working Surfaces

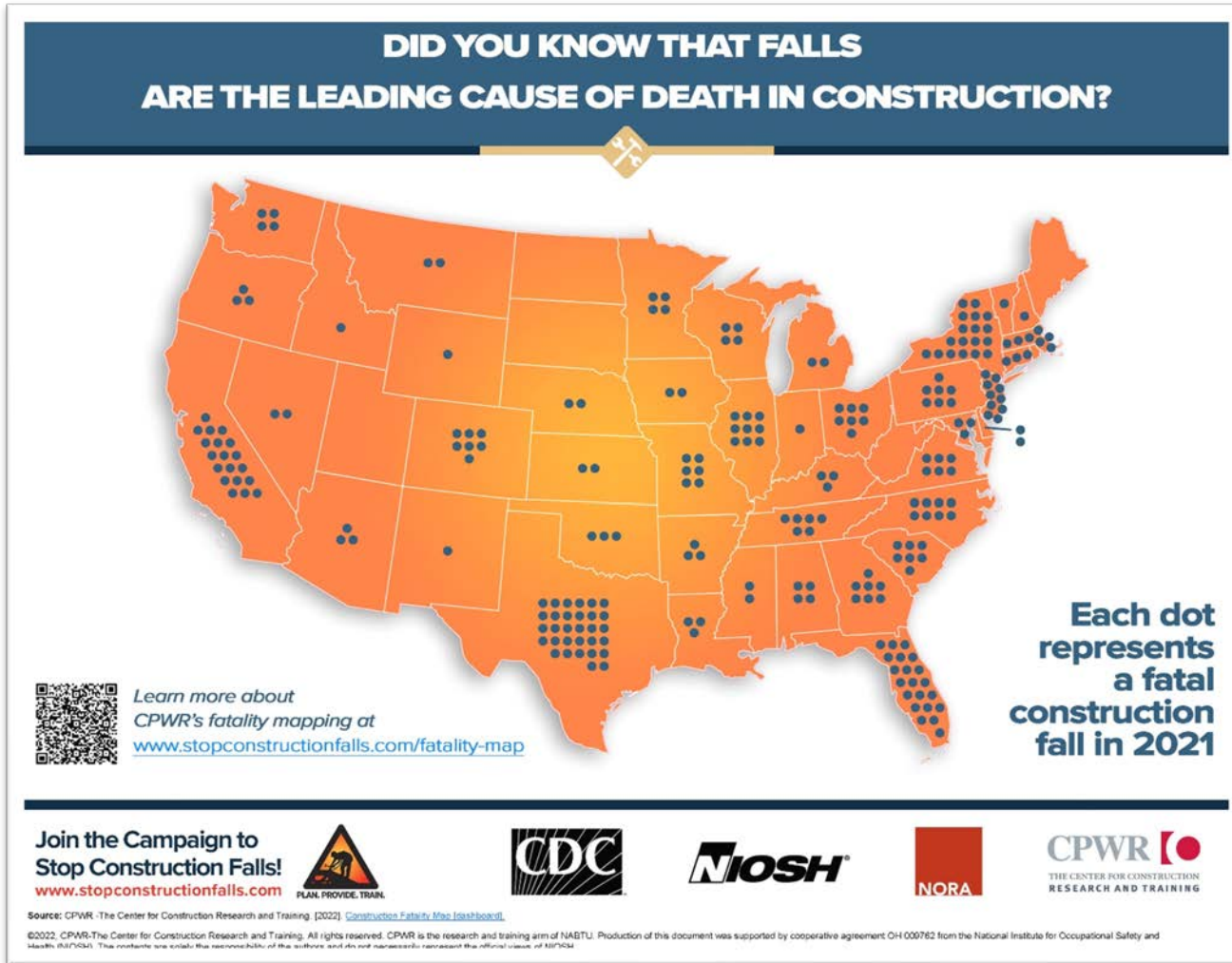


- ▶ If you must walk or work on a surface at your job, the surface shall be safe.
- ▶ Walking/working surfaces shall be kept clean, orderly, sanitary, and free of hazards.
- ▶ Walking/working surfaces shall be able to support you, your co-workers, and materials safely.

©2022, CPWR-The Center for Construction Research and Training. All rights reserved. CPWR is the research and training arm of NABTU. Production of this document was supported by cooperative agreement OH 000762 from the National Institute for Occupational Safety and Health (NIOSH). The contents are solely the responsibility of the authors and do not necessarily represent the official views of NIOSH.

CPWR []
THE CENTER FOR CONSTRUCTION
RESEARCH AND TRAINING

2022 Stand-Down Materials: Infographic Updates



English-Language Falls Webinars

📍 NRCA Free Falls Webinars

- 📍 Personal Fall Arrest Systems, including calculated clearance distances
- 📍 Ladder use, setup, points of contact education, guardrails, and warning lines and safety monitors systems
- 📍 Rescue techniques and suspension trauma
- 📍 CPWR Experts Q&A Panel

Fall Protection Q&A Panel 2022

Welcome: Chris Trahan Cain, CIH, Executive Director,
CPWR – The Center for Construction Research and Training

Presenters:
Thom Kramer, PE, CSP, Principal at LJB Inc.,
Chair of the ANSI/ASSP Z359 Full Committee
Dan Henn, VP of Operations at Reliance Fall Protection,
Vice-Chair of the ANSI/ASSP Z359 & Chair of the Z359.14 Subgroup
Adam Rubin, MS, CSP, Vice President, Safety at Buckeye Partners,
Vice-Chair of the Z359.14 Subgroup
Mike Dickerson, Safety Consultant, American Contractors Insurance Group,
Member of the ANSI/ASSP Z359 Full Committee

For audio trouble, call in using a phone at: (415) 655-0003
Access code: 2550 088 6787 #

For technical difficulties, chat Jessica Bunting or email jbunting@cpwr.com.

Today's event is being recorded and will be emailed & posted on cpwr.com/webinars.

 StopConstructionFalls.com  **PLAN. PROVIDE. TRAIN.**
Three simple steps to preventing falls

New NIOSH Falls Video

- True Fall Stories: Standing Down for Fall Safety
- Features interviews with:
 - Harvey McGill, University of Washington – Pacific Northwest OSHA Education Center
 - Ken Bunn, Builders Mutual
 - Dave Stormont, Stormcoast Homes LLC
 - Barb Epstein, Oregon FACE Program



Expanding Spanish-Language Accessibility

- 👉 Spanish-language falls webinars:
 - 👉 Second Annual Spanish-Language Falls Stand-Down Kick Off: Use of Personal Fall Arrest Systems
 - 👉 UAGM-OSHA-NIOSH-CPWR: Event for the National Falls Campaign
- 👉 New Spanish-language falls YouTube video playlist
- 👉 Expansion of resources available in the Spanish-language section of www.stopconstructionfalls.com

"Tuve un accidente hace 19 años, fue algo que me dejó marcado - incluso hasta el día de hoy. Nunca me repuse de ese accidente."

Juan, trabajador de la construcción fue algo que creo yo que me dejó marcado.

LA CONSTRUCCIÓN TIENE EL NIVEL MÁS ALTO DE CAÍDAS MORTALES

LA CONSTRUCCIÓN es la industria con más caídas mortales

representando más de **1/2** de todas las caídas relacionadas con el trabajo a nivel nacional

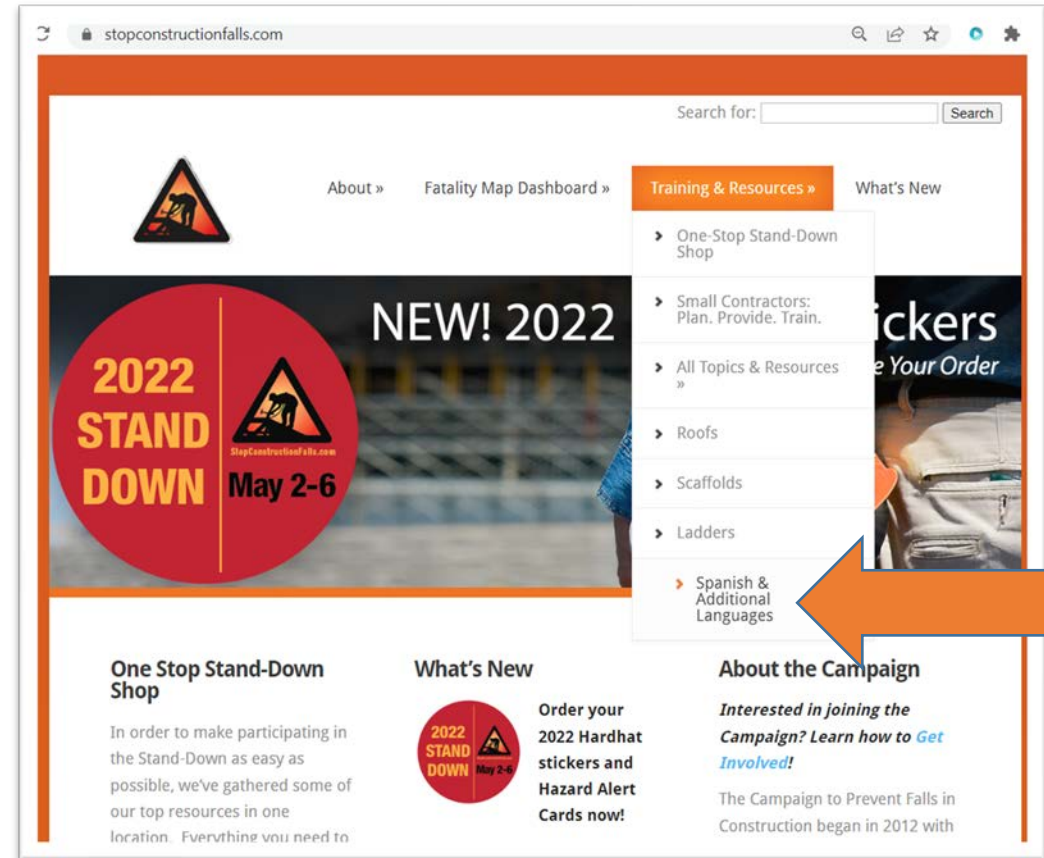
51%

Los hispanos son el **29%** de la fuerza laboral en la construcción

Fuente: Sedán Morales CK, Chasmont Meméndez CK, Marsh SM. Fatal work-related falls in the United States, 2003-2014. Am J Ind Med. 2018;61:204-215.

Expanding Additional Language Accessibility

- Expansion of linked resources in the “Additional Languages” section of www.stopconstructionfalls.com
- Resources now available in:
 - Cambodian
 - Haitian Creole
 - Laotian
 - Polish
 - Portuguese
 - Russian
 - Vietnamese



Save Time and Money – outreach program

- Pandemic put a hold on outreach activities; however
 - Many WG members have reconnected with their local permitting offices to reengage the effort
 - Working with Milwaukee Tools to see about getting PoP access, but at least in tool literature
 - A community college that has a construction program
 - OSHA to hand cards/materials out during Outreach efforts
- Overall effort to see how or what mechanism ‘gets through’ to the build falls awareness to small/smaller contractors

SAVE Time and Money

3 simple steps to prevent a fall

STEP 1 - PLAN each day to prevent falls on the job.

STEP 2 - PROVIDE the right safety tools and equipment for the job.

STEP 3 - TRAIN your employees on the equipment and work practices to prevent falls.

Find FREE materials*

<https://www.osha.gov/SLTC/competentperson/index.html>

PLAN PROVIDE TRAIN
Three simple steps to preventing falls.

* When you scan the QR Code or use the URL, you will not be asked for any company or personal information. The goal is to prevent falls and injuries by providing free information to construction contractors, their employees and competent persons (<https://www.osha.gov/SLTC/competentperson/index.html>). The materials were compiled by the National Institute for Occupational Safety and Health and CPWR-The Center for Construction Research and Training.

CPWR THE CENTER FOR CONSTRUCTION RESEARCH AND TRAINING August 2020

Not just small contractors...

- Falls on same levels
- Falls from elements
 - Roofing insulation acting as a sail during high winds
 - Ladders being blown over, slipping on ice, etc.
 - Manlift issues in wind, on ice, etc.
- Falls through
 - Not only people but materials and tools
 - Deck integrity
- Leading Edges

Thanks to the Falls Work Group!