



# Developing An Internal Traffic Control Plan

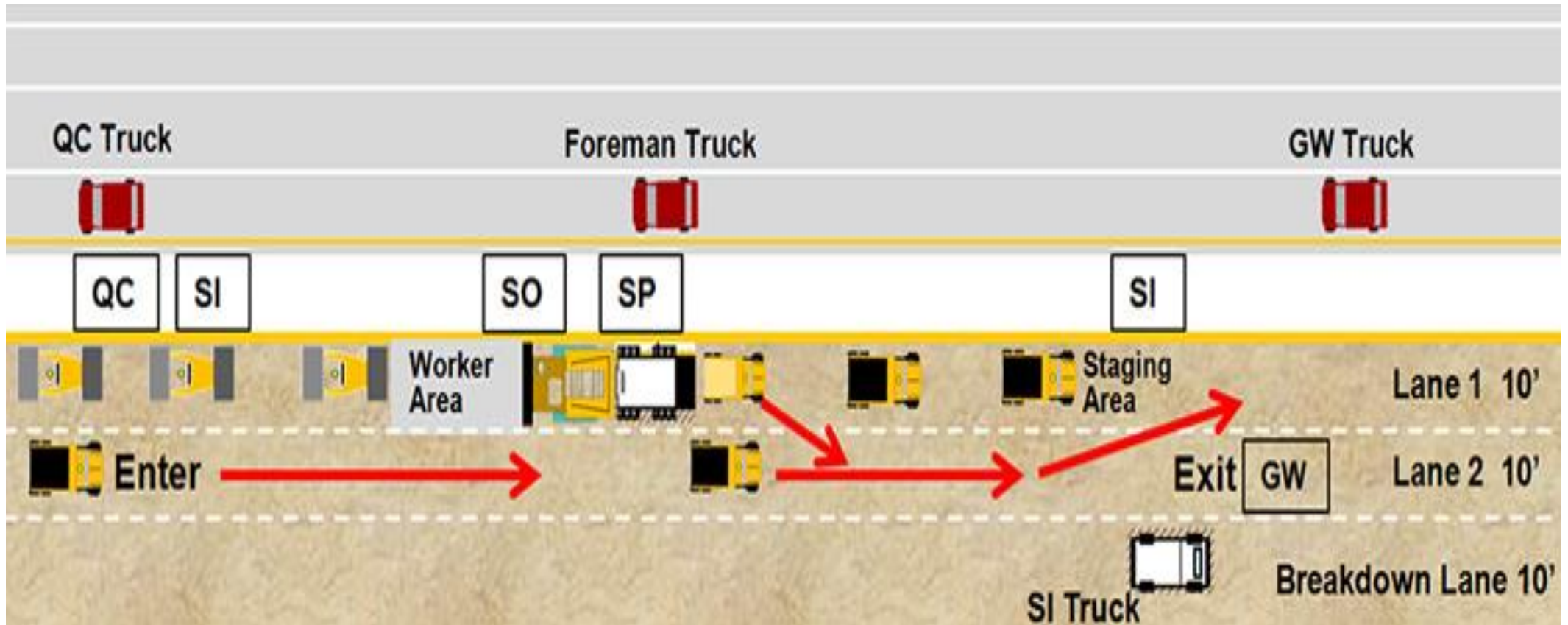
Module 6 Student Workbook pages 31 -38

# Learning Objectives

- Tell when an ITCP needs to be developed
- List the ITCP aspects that are created during each project phase
- Sketch an ITCP
- Describe the types of TTCDs used in an ITCP
- Report on how to enforce an ITCP



# What is An ITCP?



# When to Develop an ITCP

---



# Bidding & Planning



# Contractor Planning



# Construction



# Communication



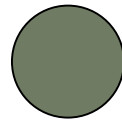
# Elements of an ITCP



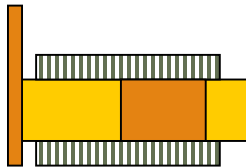
# ITCP Legend



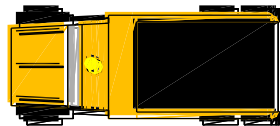
= Worker-Free Zone



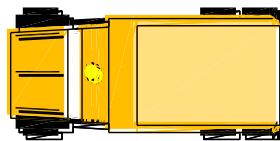
= Construction Barrel



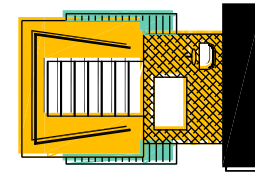
= Grader



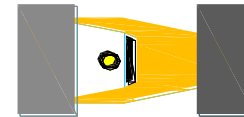
= Full Truck



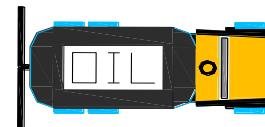
= Empty Truck



= Paver



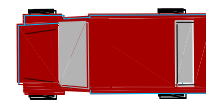
= Roller



= Tack Truck



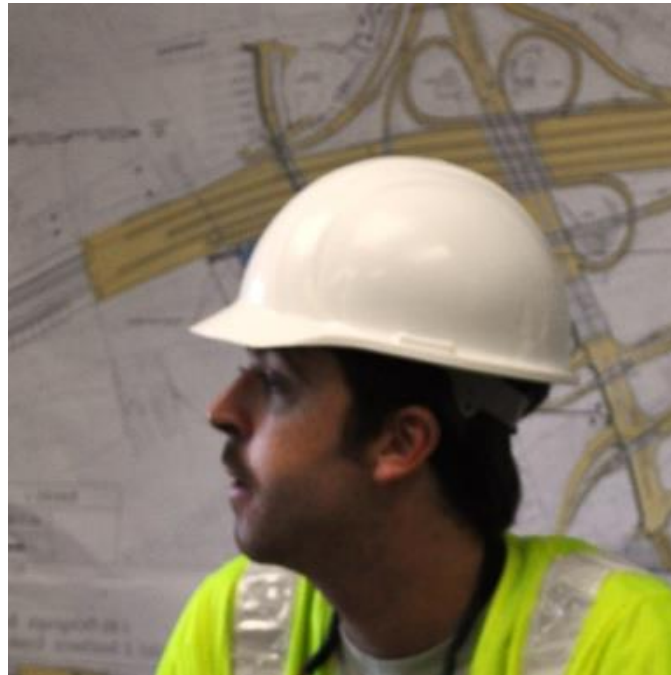
= Water Truck



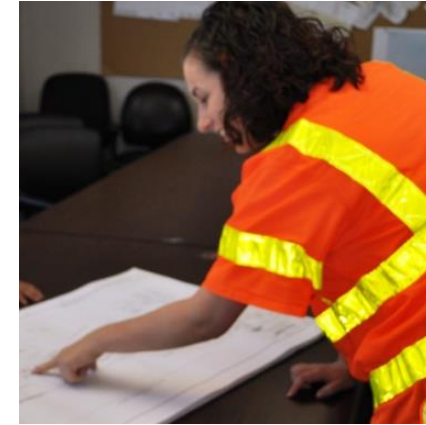
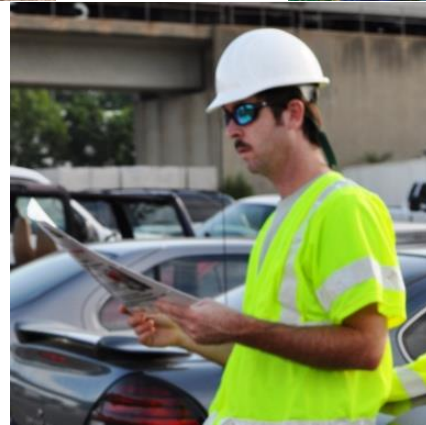
= Car

# Scope of the Operation

---



# Review the Site Plan



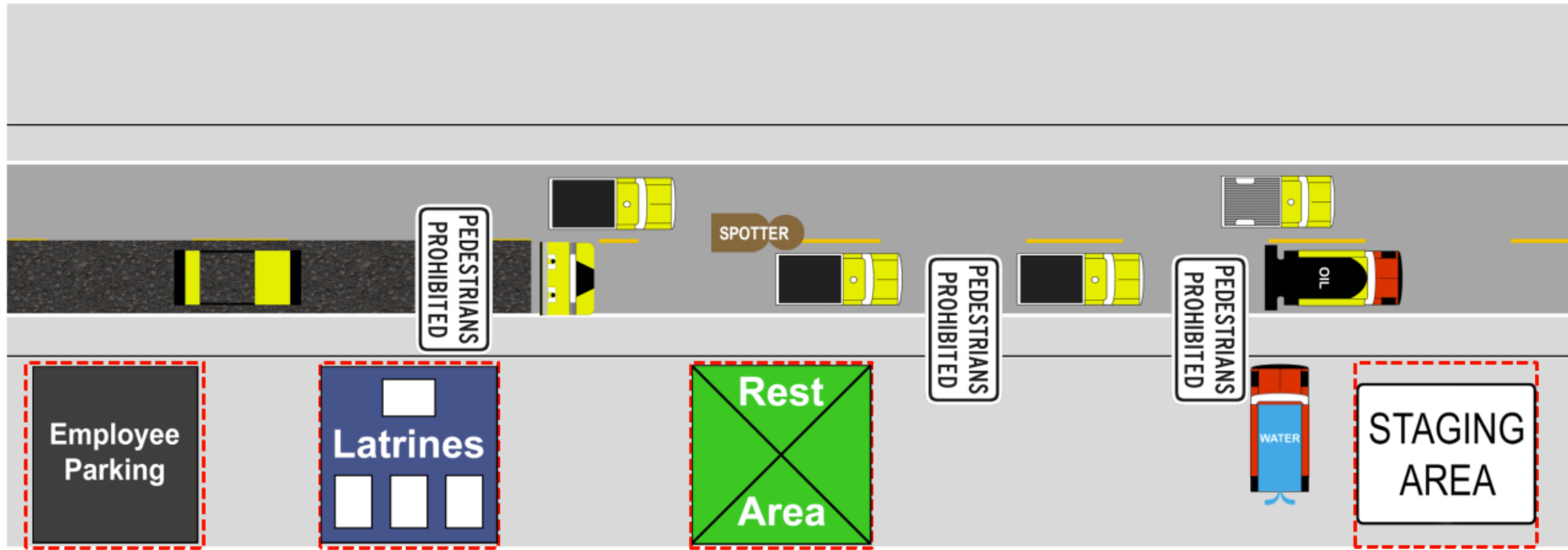
# Implement Communications Plan



# Identify Sub-operations

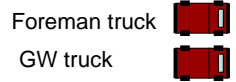


# Site Specific Diagram

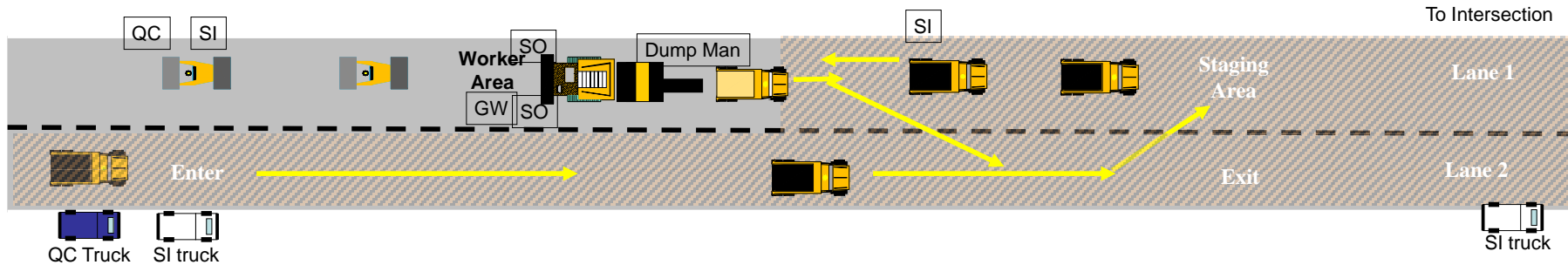


# Add Plan Notes

## Remote Staging Area



## Internal Traffic Control Diagram 1 Lane 1



## Equipment I List

- 2 Rollers
- 1 Paver/Pick-up Machine
- 1 Tack Truck
- 1 Water Truck
- 1 Mechanic Truck
- 1 Broom
- 2 Quality Trucks
- 2 State Trucks
- 8 Dump Trucks

## Safety Notes

- Stay in trucks except at lunch
- Wear your vest on site
- Reduce speed near paver and rollers to 15 mph, never enter high range
- Caution entering and exiting site on to active traffic
- Ticket taker shall wait until the truck is at the windrow to take the load ticket
- When possible, stay on the driver's side of the vehicle
- Park pick-up trucks out of active truck travel lane, or equipment path, if possible on the shoulder
- Park behind the operation
- Place samples off the side of the road

## Personnel List

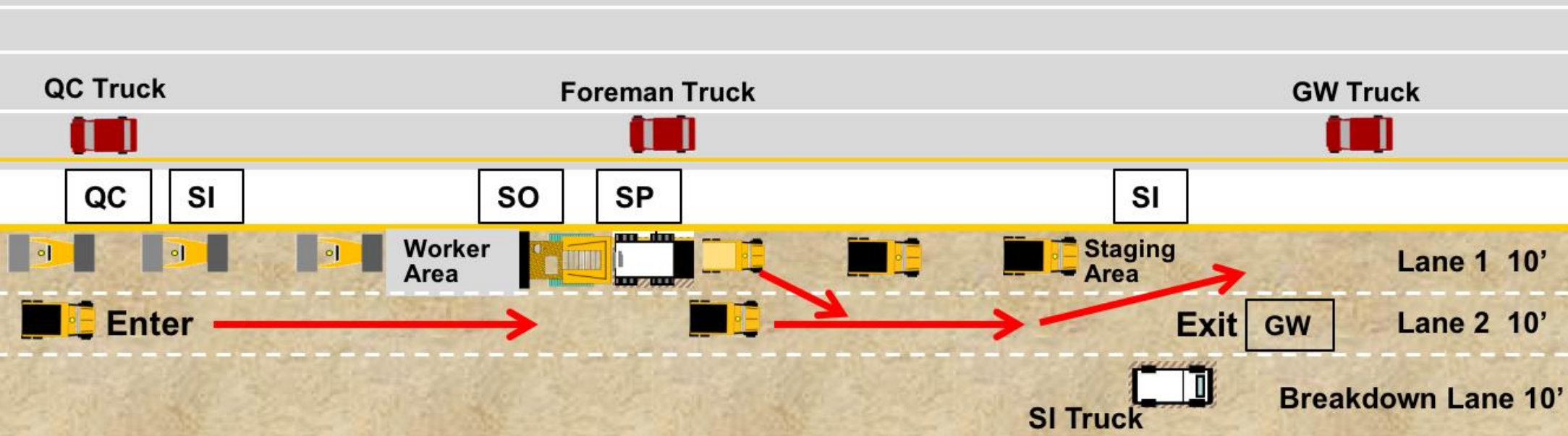
- 2 Roller Operators
- 1 Paver Operator
- 1 Screed Operator
- 1 Ground Worker
- 1 Foreman
- 2 Quality Control
- 2 State Inspector

Not to Scale

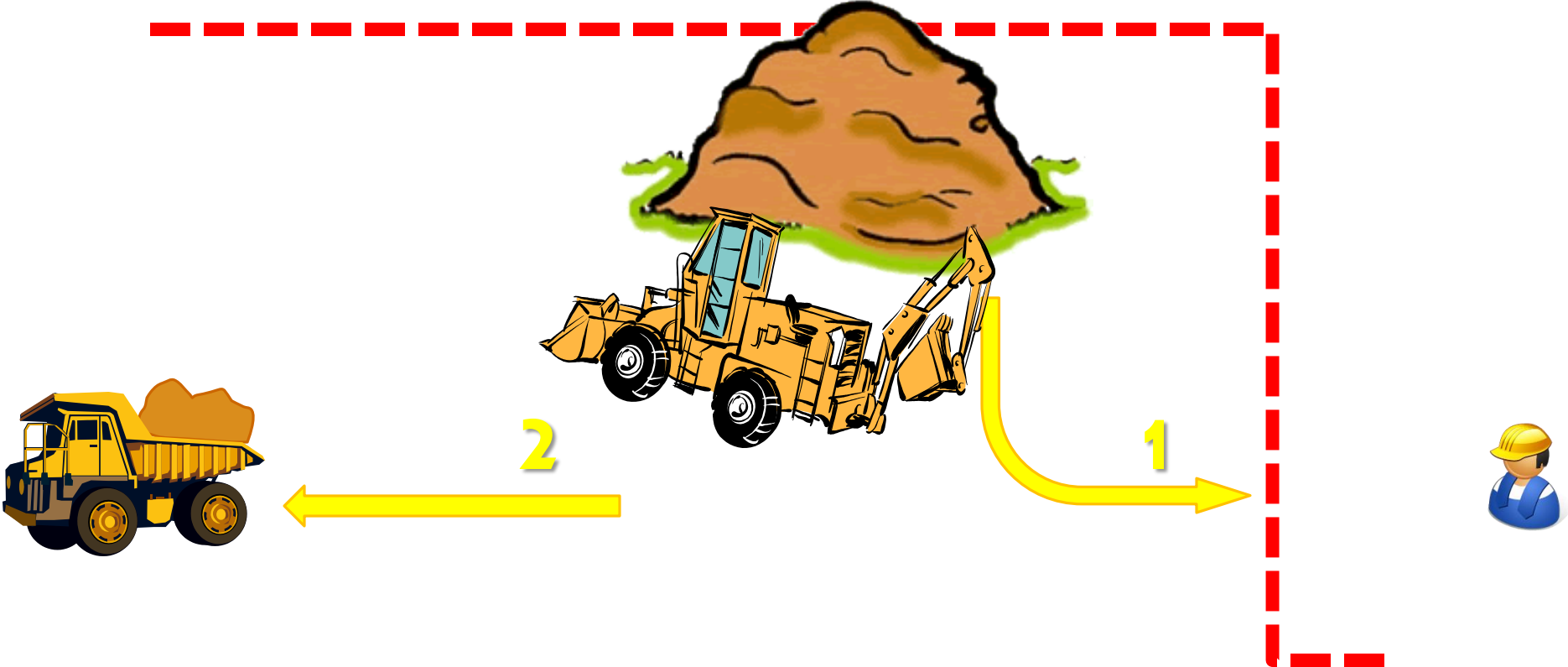
# Temporary Traffic Control Devices



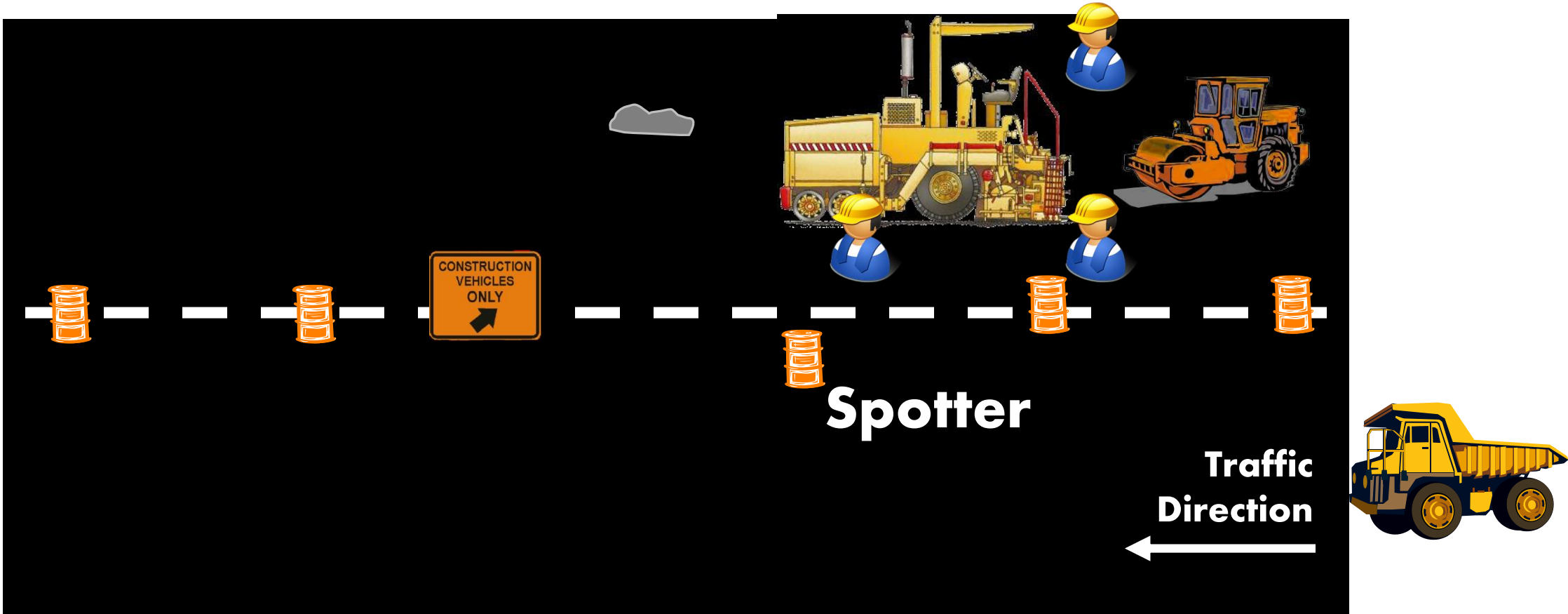
# Example #1



# Example #2



# Example #3



# Analyze Worker Behavior & Activities



# Activity: Draw an ITCP

---

Your group will draw an ITCP for a simple paving operation or other type of project.

Your group will present its plan to the class.

# Enforcing Your ITCP



# Summary

- Tell when an ITCP needs to be developed
- List the ITCP aspects are created during each project phase
- Sketch an ITCP
- Describe what TTCDs are used in an ITCP
- Report on how to enforce an ITCP

