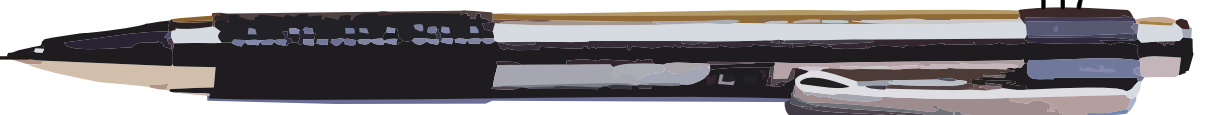
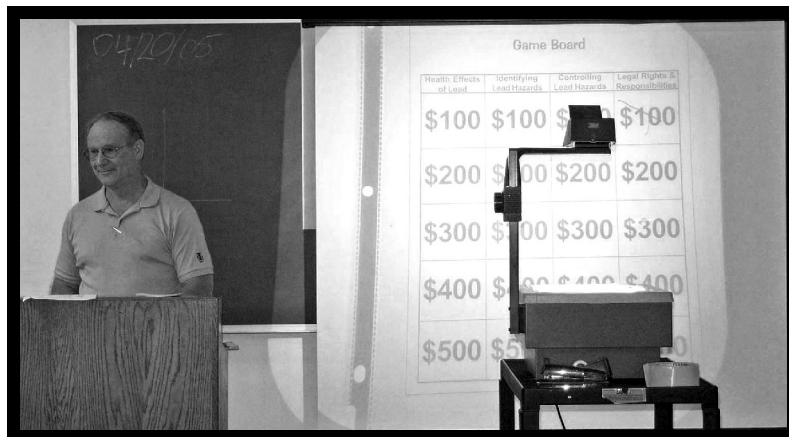


Activities



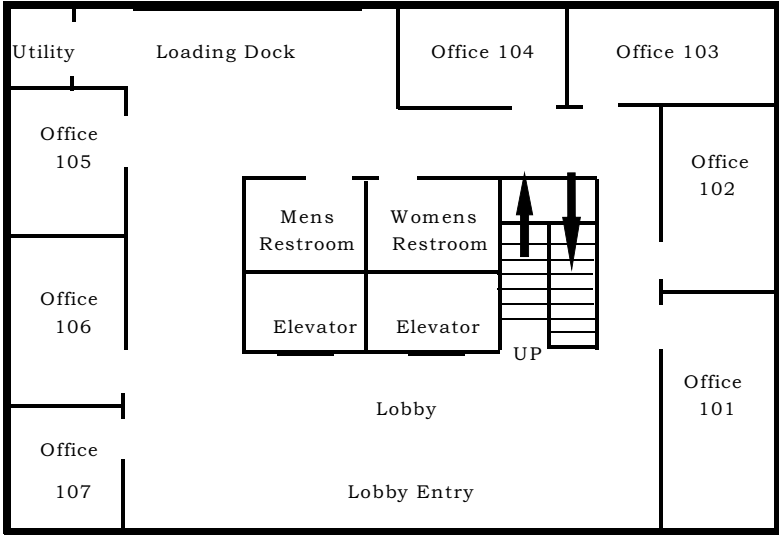
PLANNING ACTIVITY

Work in small groups to decide on the answers to the questions below. There may be more than one way to answer the questions. It is important that you figure out why you want to handle a situation in a certain way.

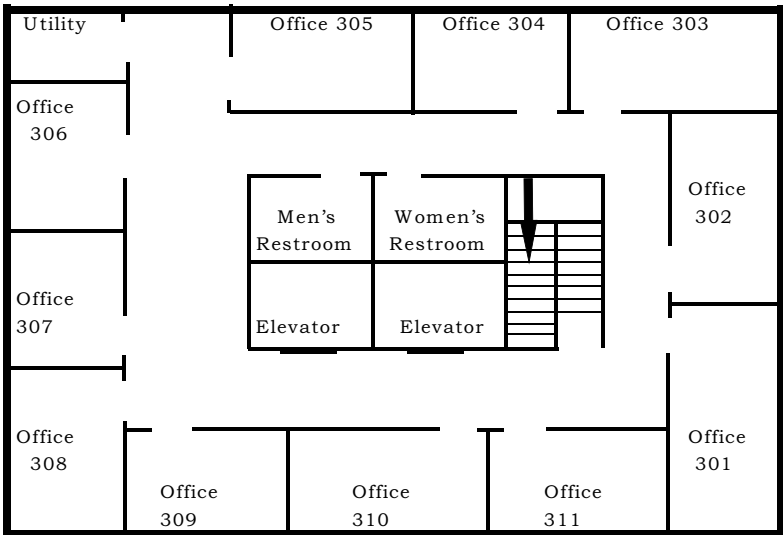
OVERVIEW

The administration building will be partially occupied while the asbestos removal is going on. All heavy equipment must be carried up one of the two elevators. A diagram of the first and third floors is shown below.

Administration Building Floorplan



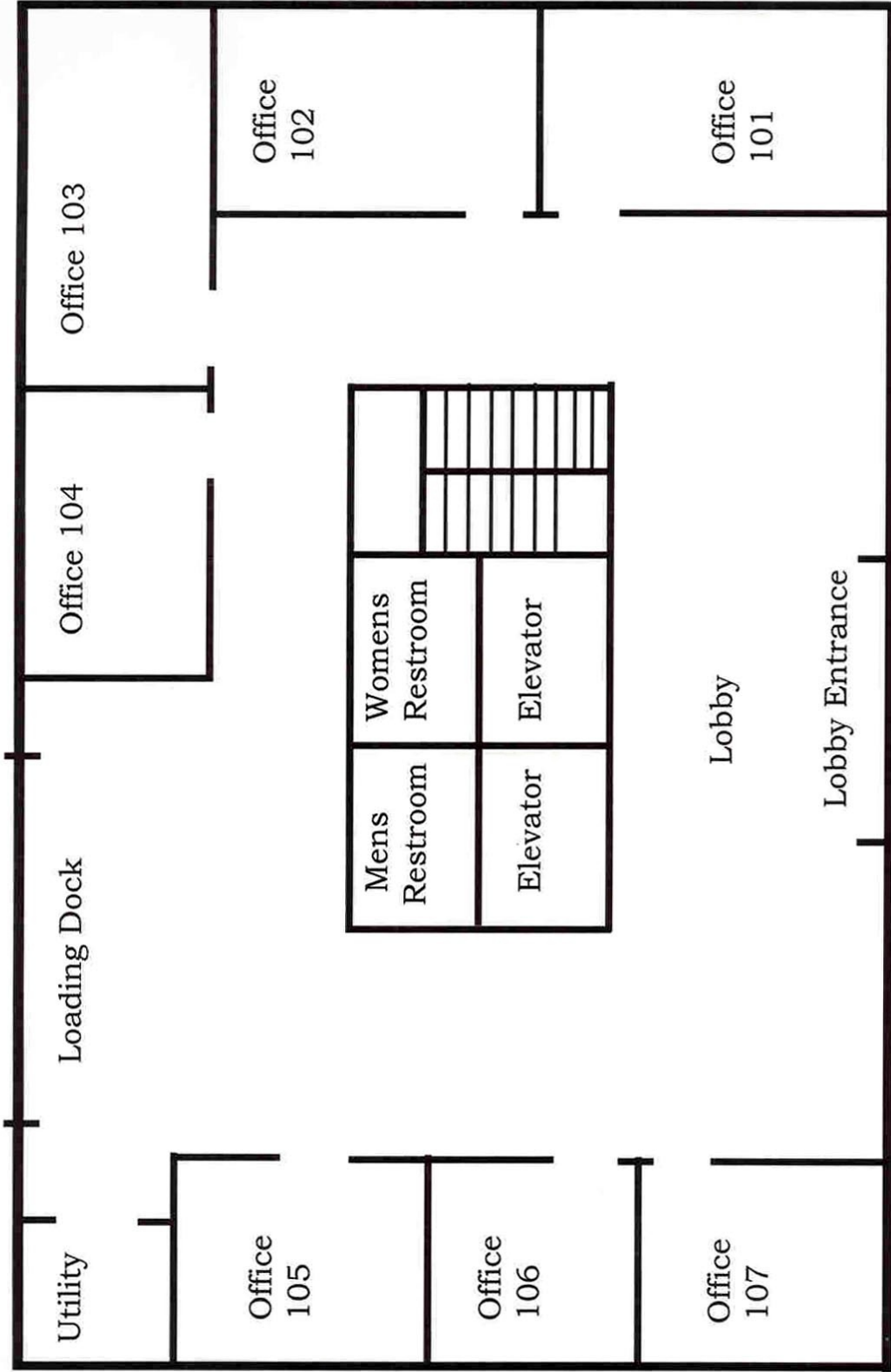
First Floor



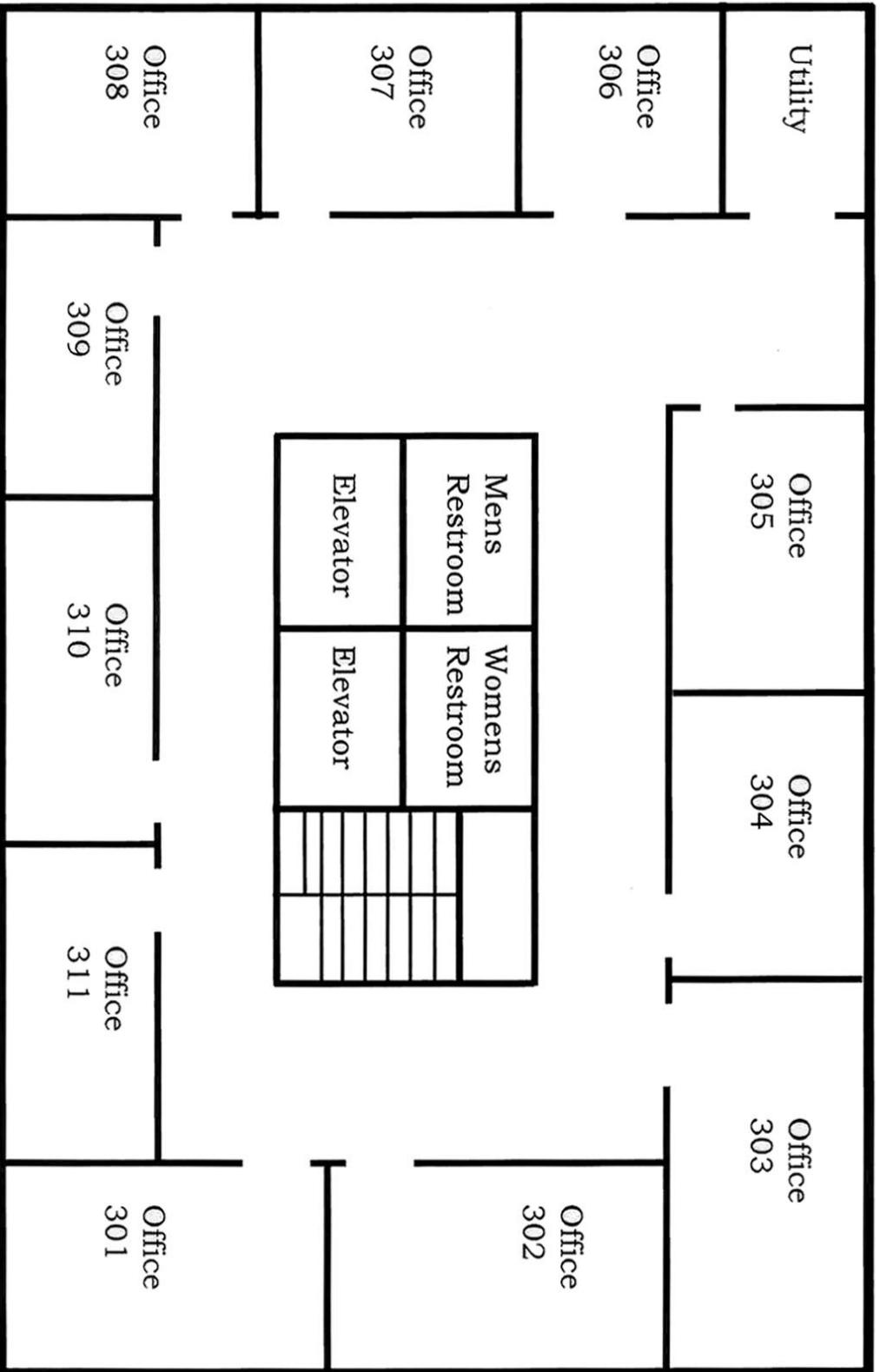
Third Floor

2. Draw a diagram showing how you will set up your containment, where you will place the decon, where you will place the waste load-out, where you will place the negative air machines, and where you will exhaust the negative air machines. You can use the diagrams on the next two pages for your drawings if you aren't an artist use this space for scribbling and thinking out loud.

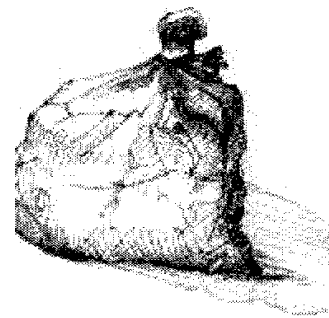
Administration Building Floorplan - First Floor



Administration Building Floorplan - Third Floor



4. How will you handle asbestos waste from this project to avoid frightening the building occupants or exposing them to asbestos?



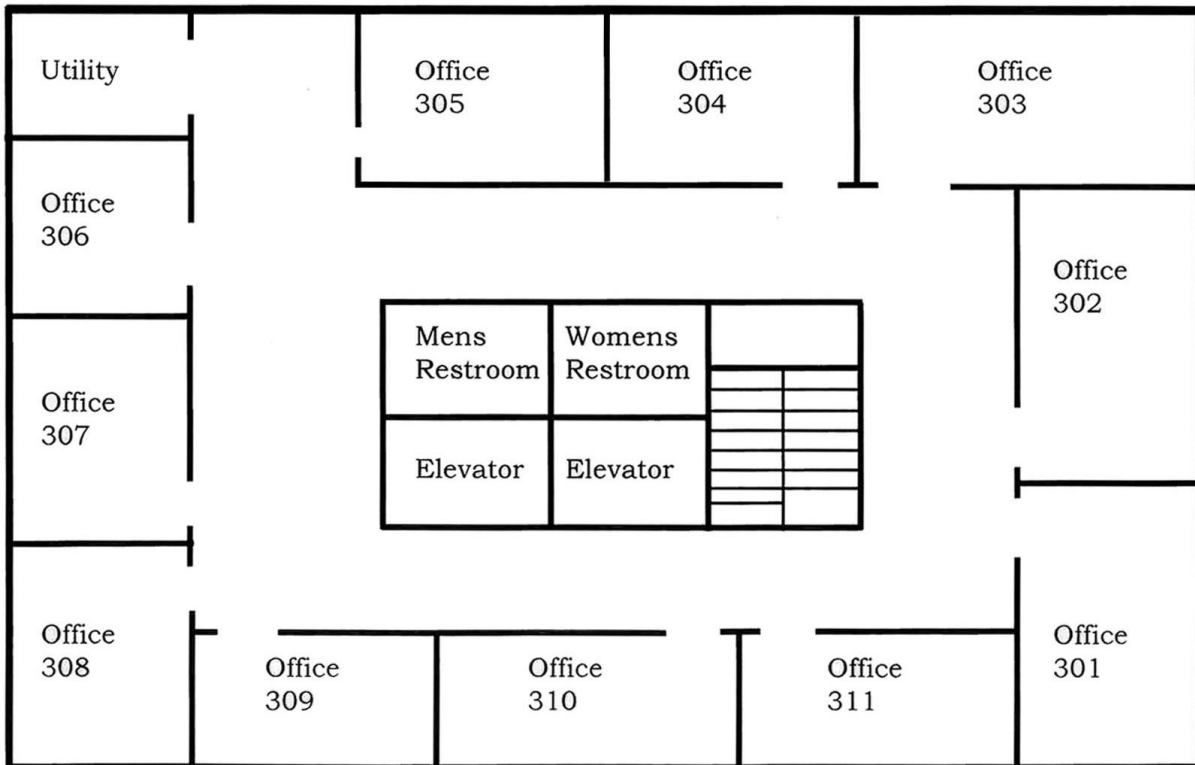
6. In office 303 of the administration building, some electrical work had been done. Ceiling tiles were taken out and left on the floor. They had been crushed underfoot into the carpet.

A. Are there any special procedures you would use in the area before removing the overhead tiles and sprayed-on asbestos? Is any personal protection necessary?

B. The overhead spray-on fire-proofing is being removed. After most of the asbestos is off, small patches of white can still be seen in many areas. What can you do to make sure this passes final inspection?

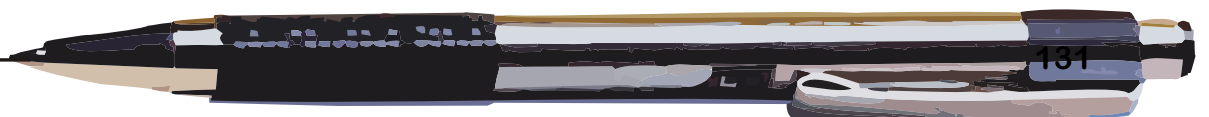
C. In office 303 the space above the suspended ceiling serves as a return air plenum for the ventilation system. There are openings in the ceiling between room 303 and the room next to it. Are there any special precautions that should be taken in removing the sprayed-on asbestos above the ceiling?

Administration Building Floorplan - Third Floor



Asbestos Decontamination Card Sort Activity

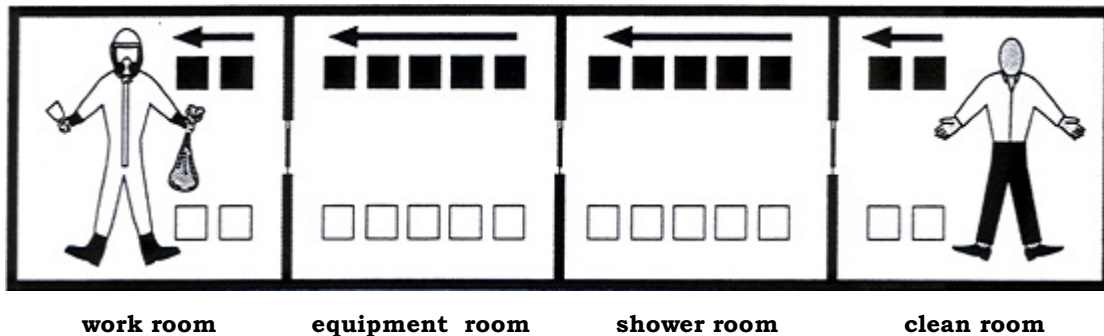
Prepared by
BRASH
University of Kentucky, Lexington, Kentucky
October 1994



Asbestos Decontamination Car Sorting Activity

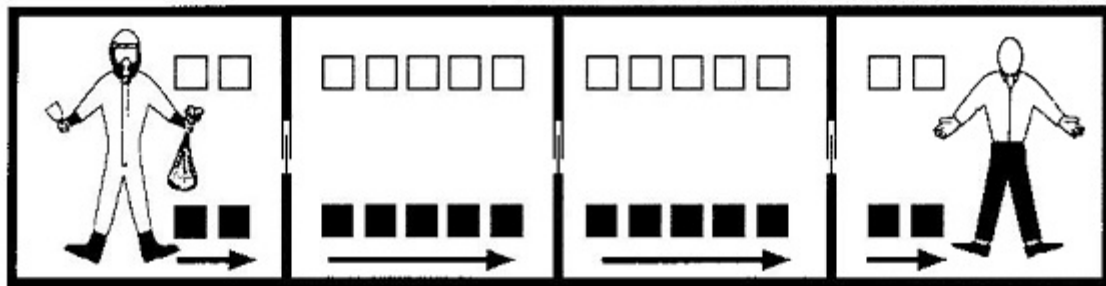
Instructions

1. To do this exercise you should have decontamination cards, a decontamination board, and a decontamination card key.
2. Look at the first set of cards that your instructor gives you and visualize the steps that an asbestos worker would need to go through to move from the clean room to the work room.
3. Note that on the decontamination board, the rooms have boxes in which to place the decontamination cards. The row of boxes on top of the rooms should be used for the first set of cards that your instructor gives you.



4. Separate the cards into piles that correspond to the room in which they should be performed for a worker to enter an asbestos contaminated area. There may be more spaces on the board than there are cards.
5. Within each room, place the cards in the order of what step you should do from entering to leaving the room. Make sure that you are moving in the same direction as the arrows between the boxes on the decontamination board.
6. After you have completed placing the set of cards representing what a worker must do in order to enter a contaminated area, your instructor will give you a second set of cards for a worker to exit an asbestos contaminated area.

7. Look at the second set of cards that your instructor gives you and visualize the steps that an asbestos worker would need to go through to move from the work room to the clean room.
8. Note that on the decontamination board, the work, contaminated, shower, and clean rooms have boxes to place the decontamination cards. The row of boxes on the bottom of the rooms should be used for the second set of cards that your instructor gives you.



work room

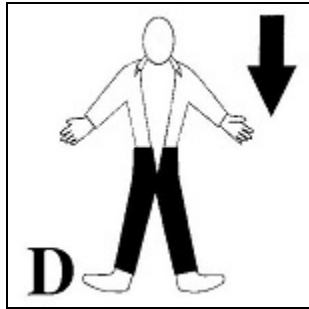
contaminated room

shower room

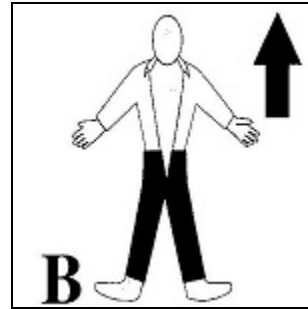
clean room

9. Separate the cards into piles that correspond to the room in which should be performed for a worker to exit an asbestos contaminated area. There may be more spaces on the board than there are cards.
10. Within each room, place the cards in the order of what step you should do from entering to leaving the room. Make sure that you are moving in the same direction as the arrows between the boxes on the decontamination board.
11. After you have completed placing the set of cards for a worker to exit a contaminated area, your instructor will collect your decontamination board.

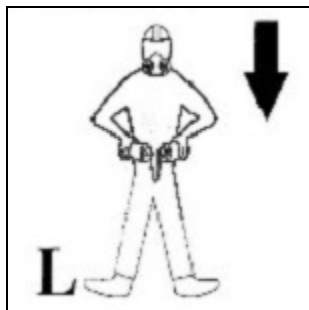
Asbestos Decontamination Card Key



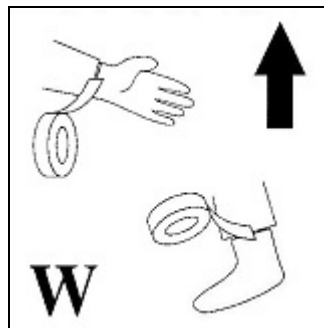
remove street clothes



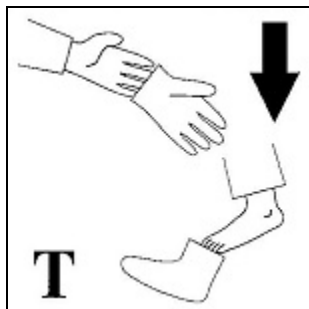
put on street clothes



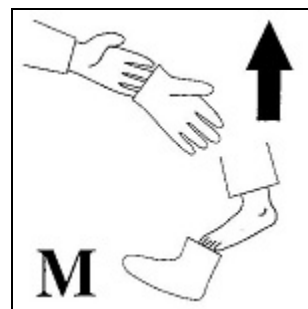
remove coveralls



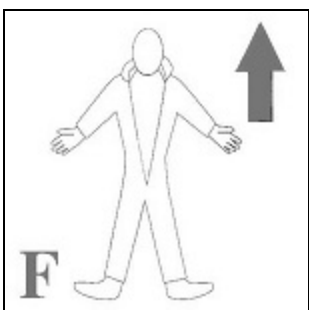
put tape on gloves and boots



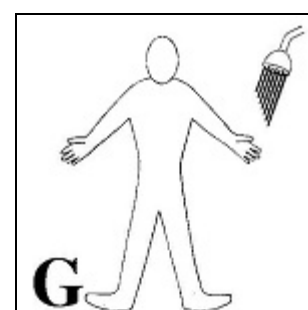
remove gloves and boots



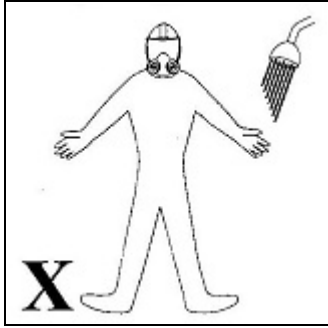
put on gloves and boots



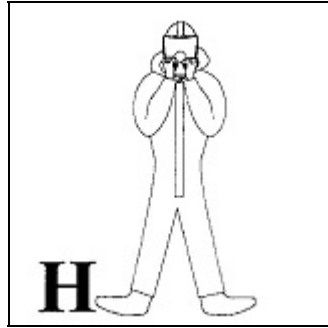
put on coveralls



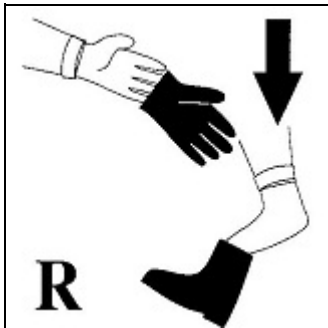
shower without respirator



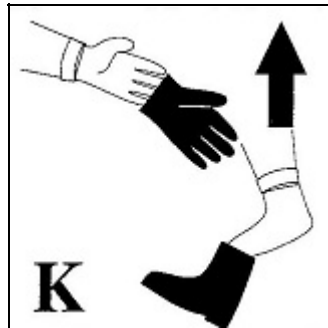
shower with
respirator



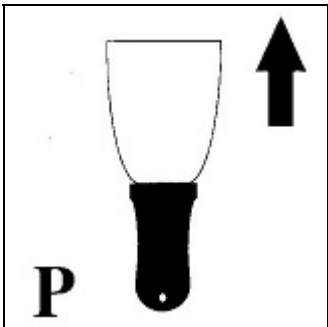
check respirator



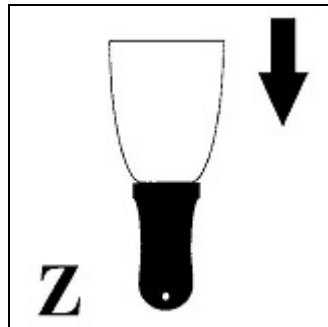
remove work
gloves and
work boots



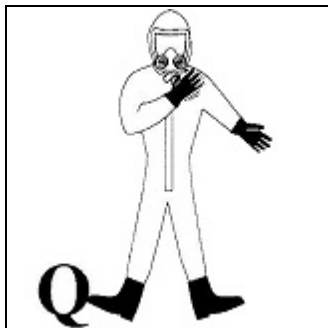
put on work
gloves and work
boots



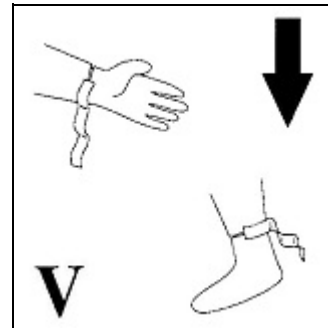
pick up tools



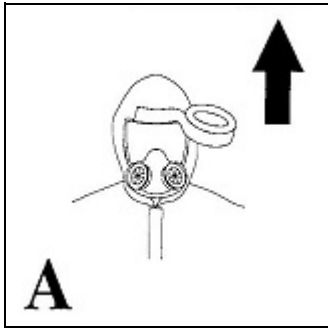
drop tools



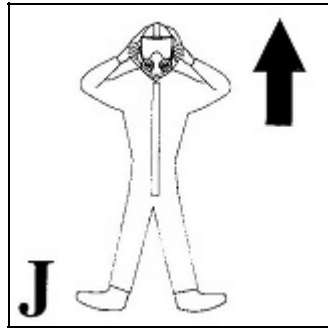
wipe off gross
contamination



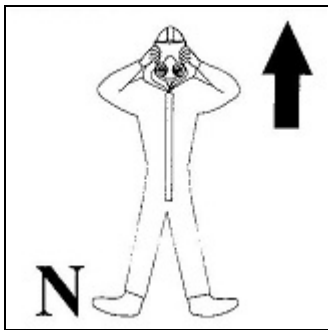
remove tape



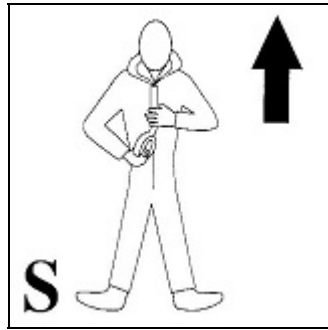
tape hood



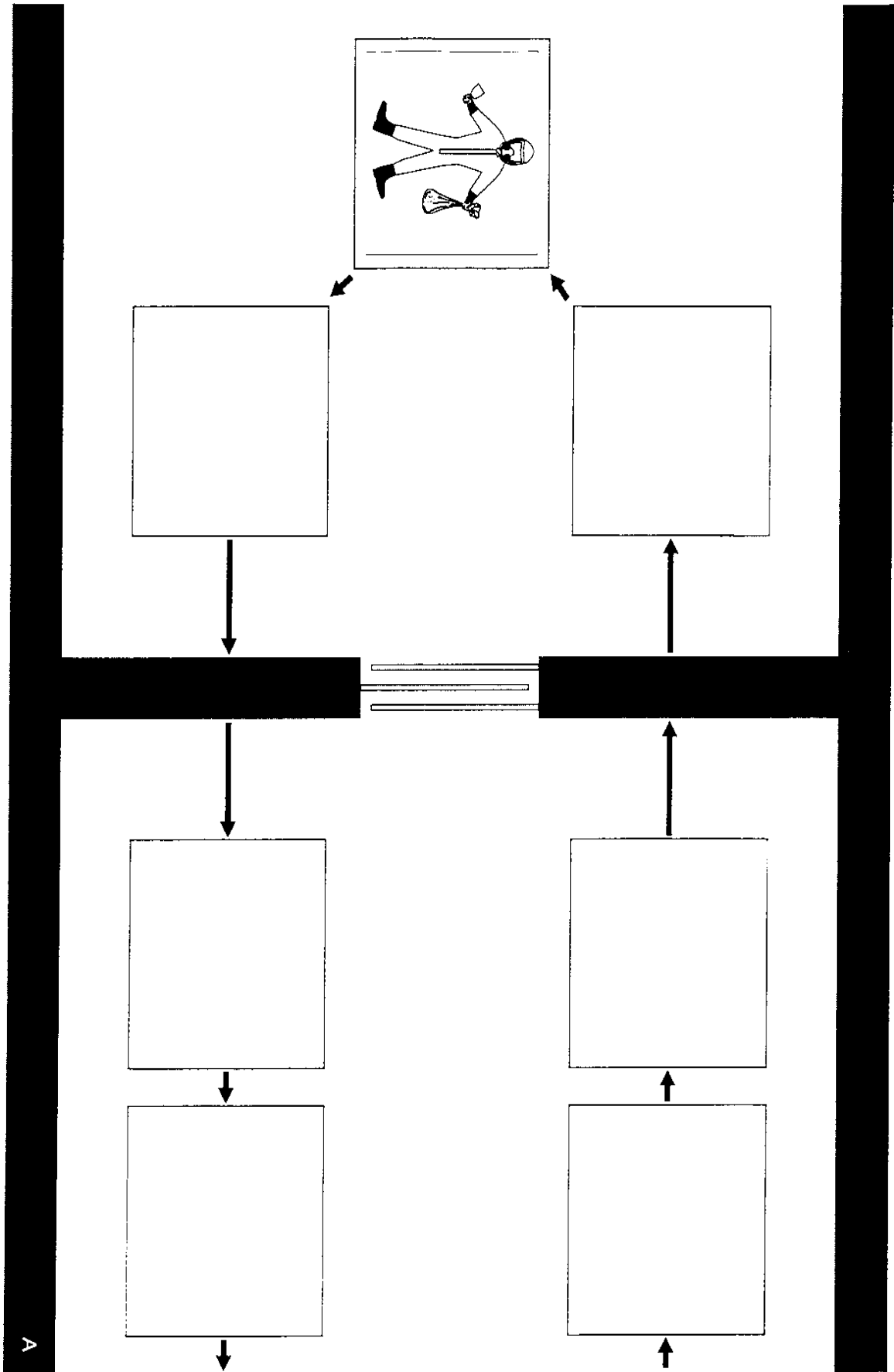
put up hood

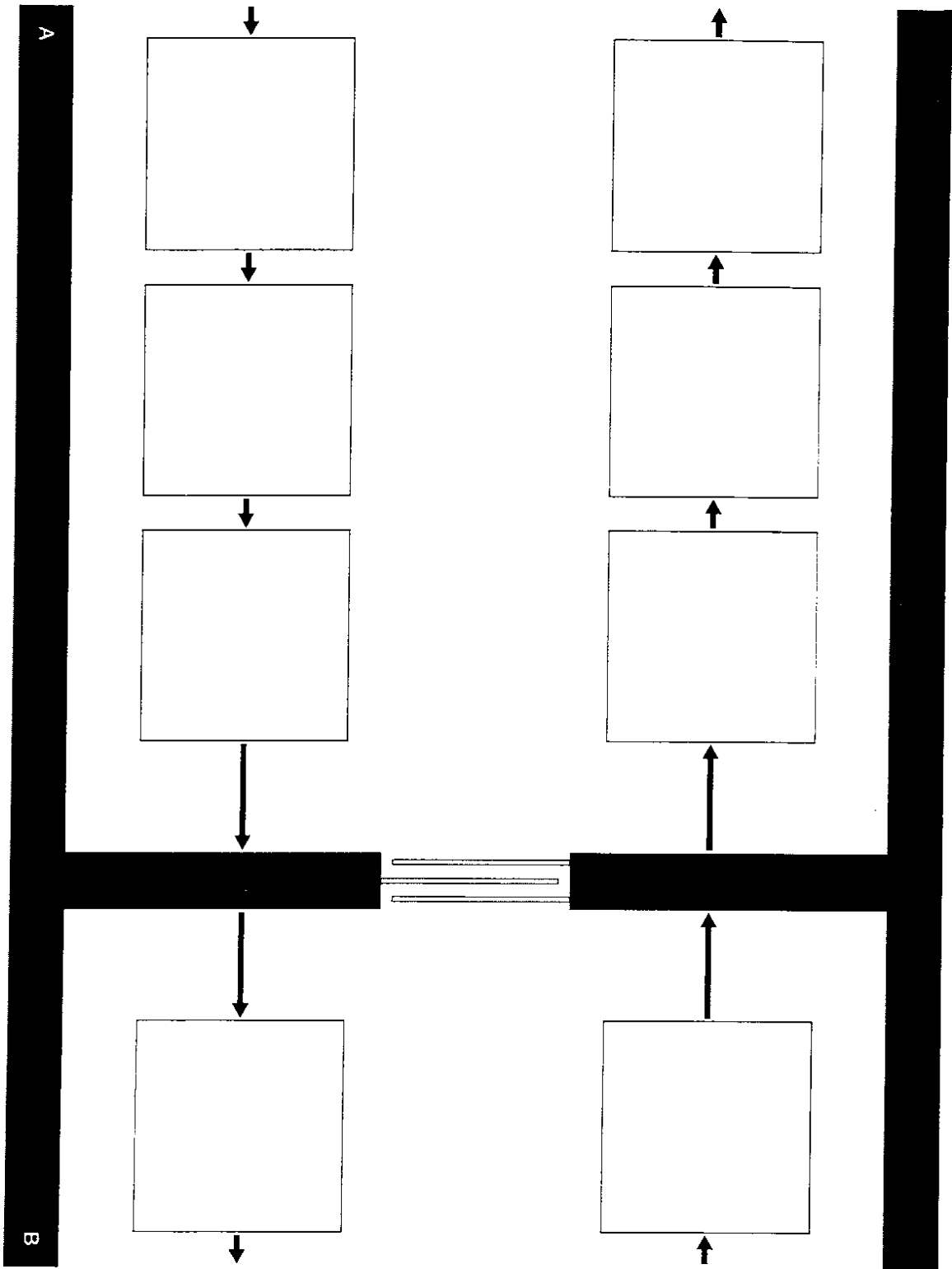


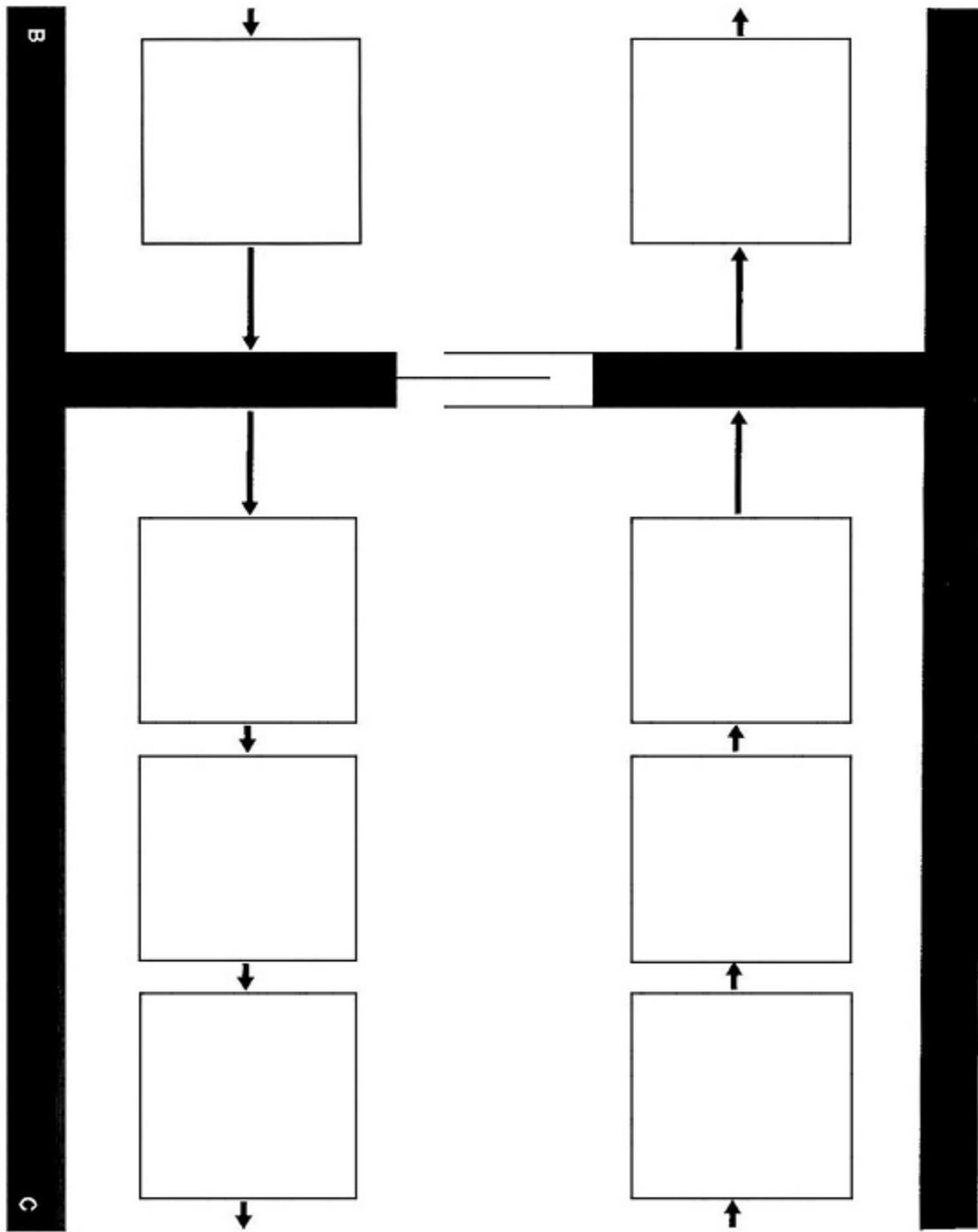
don
respirator



tape suit







c
D

