

Women in Construction Webinar Miniseries

In 2023, CPWR – The Center for Construction Research and Training held a first-of-its-kind webinar miniseries that focused on the role of women in the construction industry and how we can fill worker shortages and boost local economies by bringing more women into the trades. We plan to add additional webinars to this series in the future. Join our mailing list at cpwr.com for webinar invites and other updates.



Why We Need More Women in Construction

In the first of three sessions, panelists reviewed current employment trends and discussed the importance of hiring women to address labor shortages and other benefits to employers and employees.

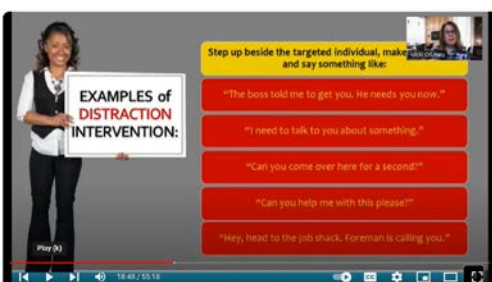
- Amber Trueblood, DrPH, Director, Data Center, CPWR
- Melissa Wells, Special Assistant to the President, NABTU
- Kathleen Dobson, Safety Director, Alberici Constructors, Inc.
- Vicki O'Leary, General Organizer, International Association of Bridge, Structural, Ornamental and Reinforcing Iron Workers (Iron Workers)



Strategies to Recruit and Retain Women in Construction

Learn what inclusive, diverse, and equitable workplaces look like in the construction industry and how they can be achieved.

- Mary Vogel, Executive Director, Building Pathways
- Nicole Schwartz, Executive Director, TradesFutures
- Vicki O'Leary, General Organizer, Iron Workers
- Liliana Calderon, Director of Health and Safety Programs, International Union of Bricklayers and Allied Craftworkers (IUBAC)
- Kathleen Dobson, Safety Director, Alberici Constructors, Inc.
- Aurora Bihler, Coordinator, Building Union Diversity (BUD) STL, Missouri Works Initiative
- Lily Monsey, Research Coordinator, University of Washington



Being an Ally - Improving Treatment of Women on the Job

Learn the basics of how to foster a jobsite safety climate that is welcoming to women and other minorities in the industry. Panelists review legal policies to ensure accountability, when and how to intervene, the benefits of anti-harassment and upstander training, and other ways to support women workers practically and directly.

- Esmeralda Aguilar, Partner, Sherman Dunn, P.C.
- Vicki O'Leary, General Organizer & Director of Diversity, International Association of Bridge, Structural, Ornamental and Reinforcing Iron Workers
- Karen Dove, Executive Director, ANEW
- Rosa Greenberg, MPH, Research Analyst, CPWR



[Scan or Click here for the YouTube Playlist.](#)
Visit cpwr.com/webinars for additional topics.