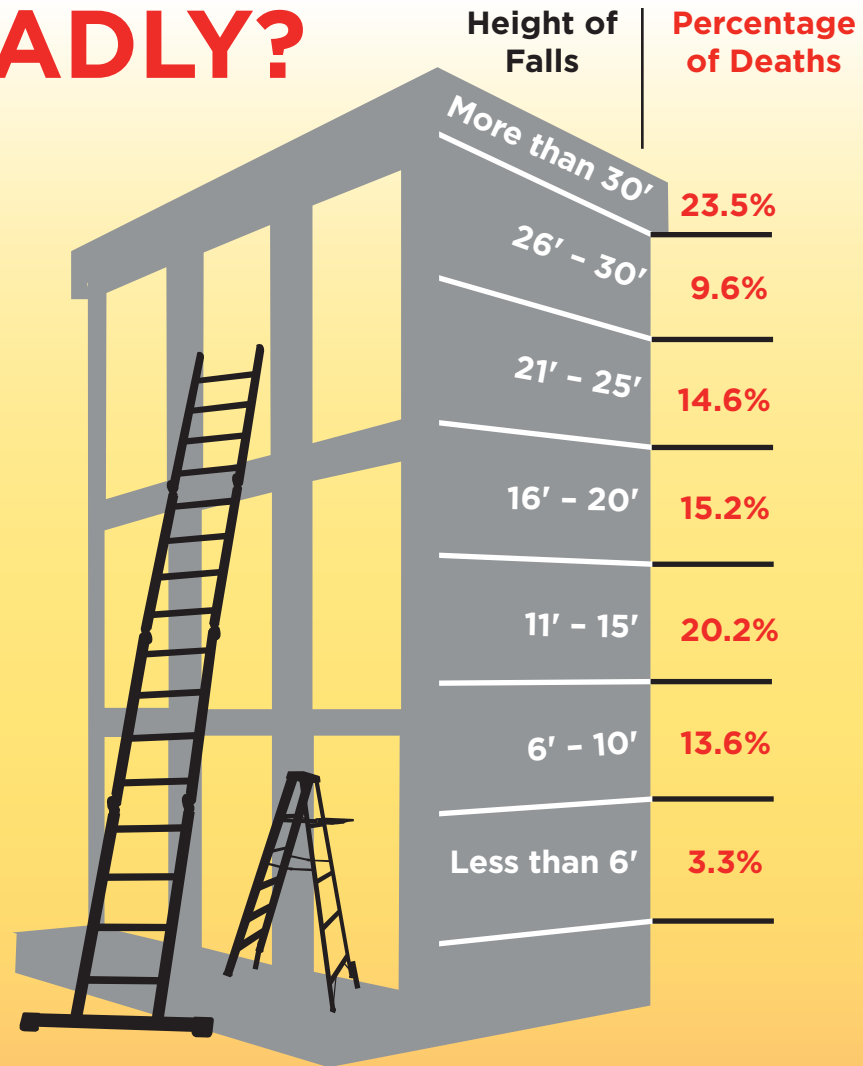


# How High is **DEADLY?**

You may not be very high off the ground but if you fall, it could be deadly.

**In 2015, 16.9% of all fatal falls were from heights of 10 feet or less.**



**Join the Campaign to Stop Construction Falls!**

[www.stopconstructionfalls.com](http://www.stopconstructionfalls.com)



**PLAN. PROVIDE. TRAIN.**

Source: Fatal occupational injuries incurred by workers in the construction industry due to falls to a lower level, 2011-2015. Bureau of Labor Statistics Injuries, Illnesses, and Fatalities (IIF). Accessed March 2017.