

Preventing Runovers and Backovers

8 HOUR TRAINING FOR ROADWAY CONSTRUCTION

This material was produced under the grant SH-31185-SH7 from the Occupational Safety and Health Administration, U.S. Department of Labor, and contract 212-2009-M-32109 from the National Institute for Occupational Safety and Health.



It does not necessarily reflect the views or policies of the U.S. Department of Labor or U.S. Department of Health and Human Services, respectively, nor does mention of trade names, commercial products, or organizations imply endorsement by the U.S. Government

Logistics

Restrooms

Emergency exits

Handouts & pencils

Cell phones



Principles of Internal Traffic Control

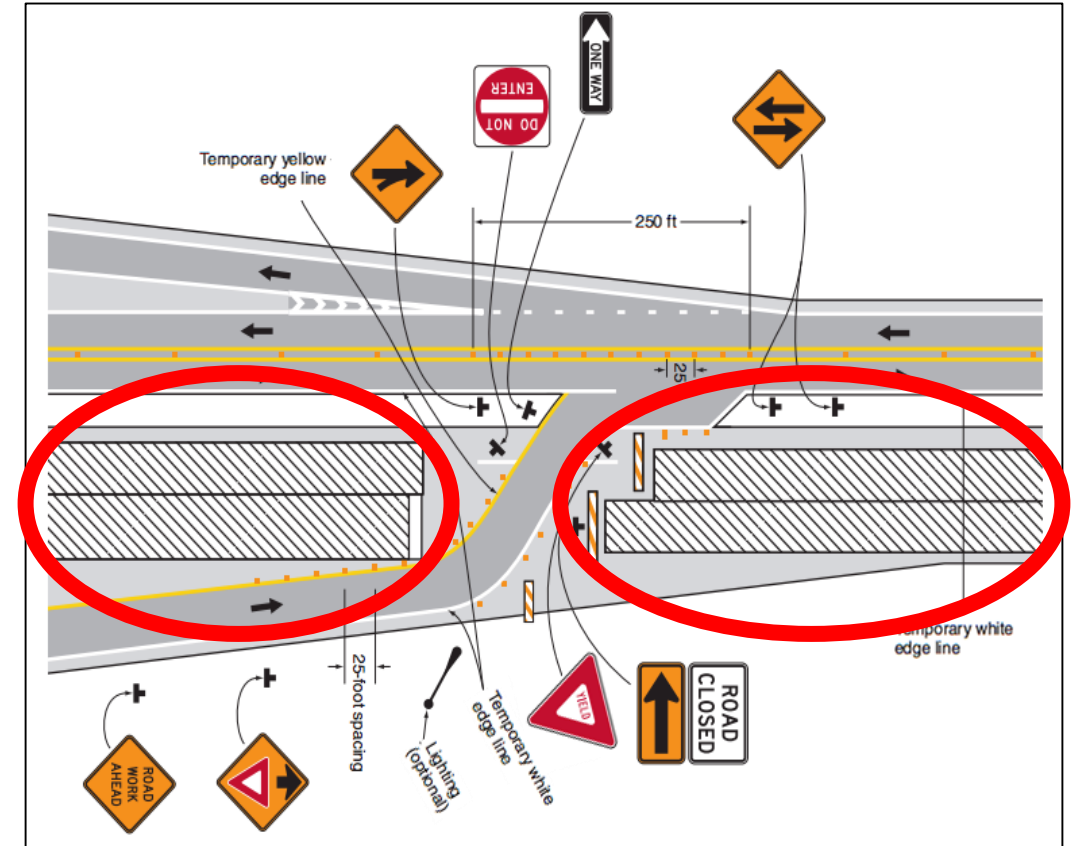
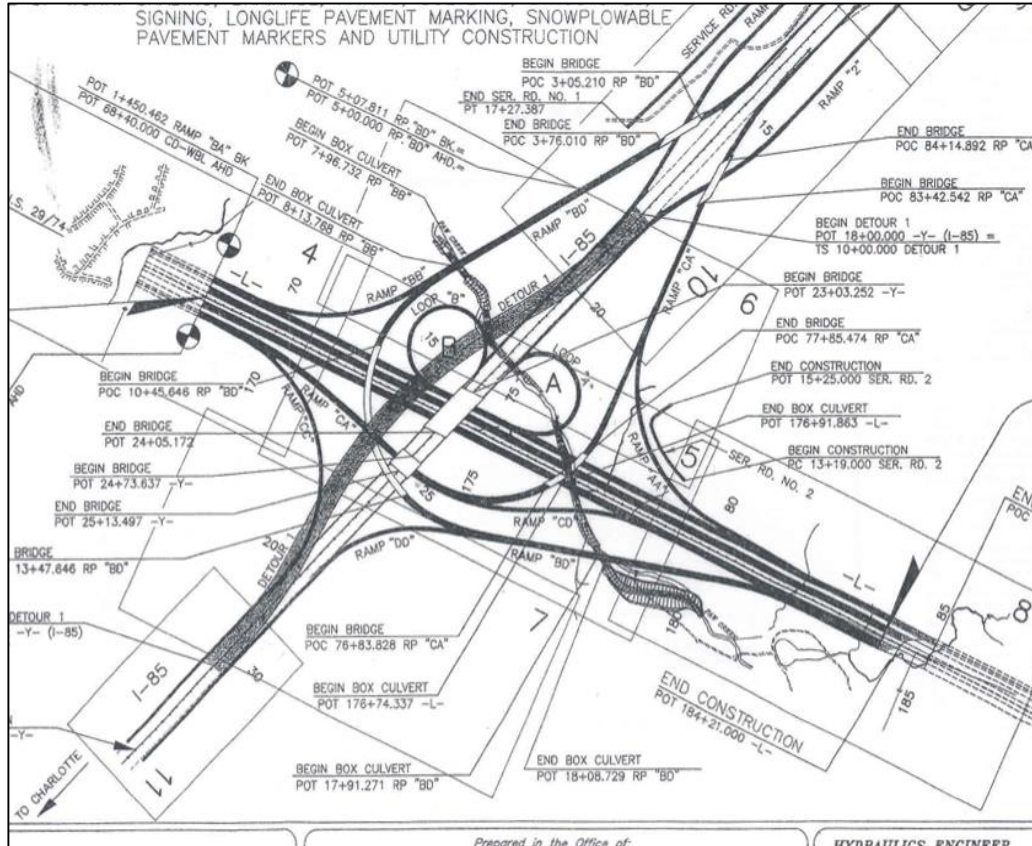
Module 1 Student Workbook pages 1 - 8

Learning Objectives

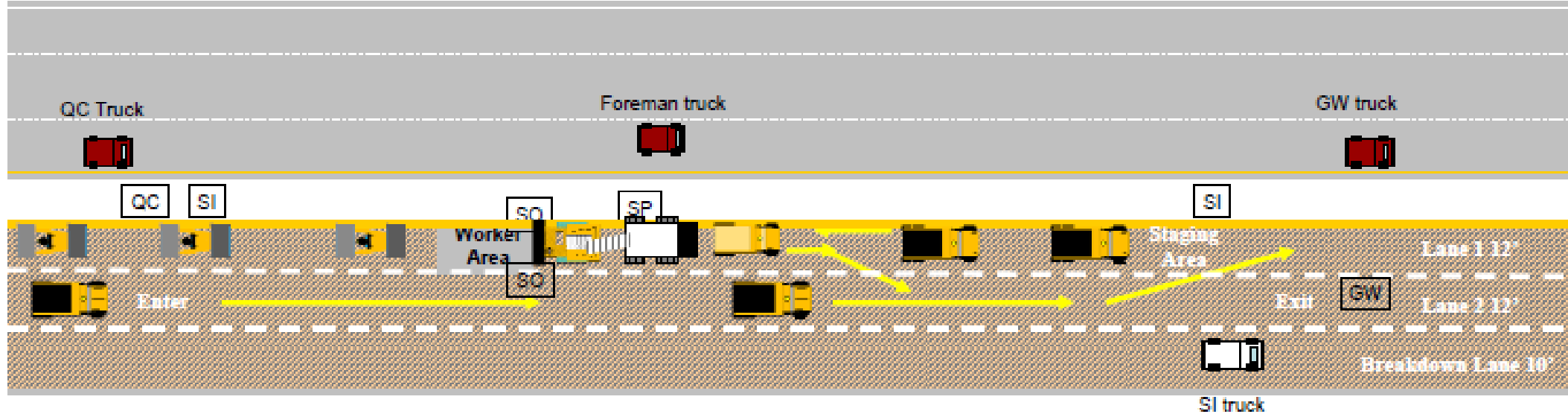
- Define the meaning of Internal Traffic Control
- Describe how ITC works
- Explain the differences between TTC and ITC
- Identify the causes of most work zone fatalities
- List ways to prevent fatalities from construction vehicles and motorists



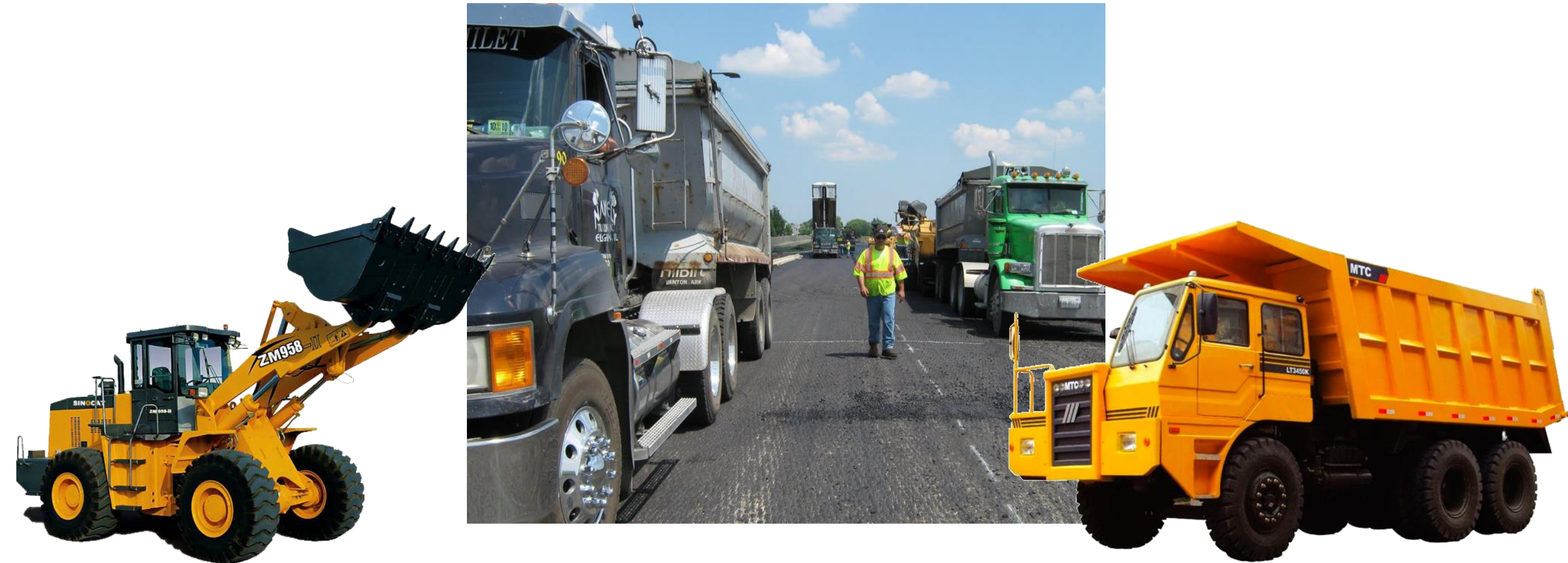
What is Internal Traffic Control?



Overview of Internal Traffic Control

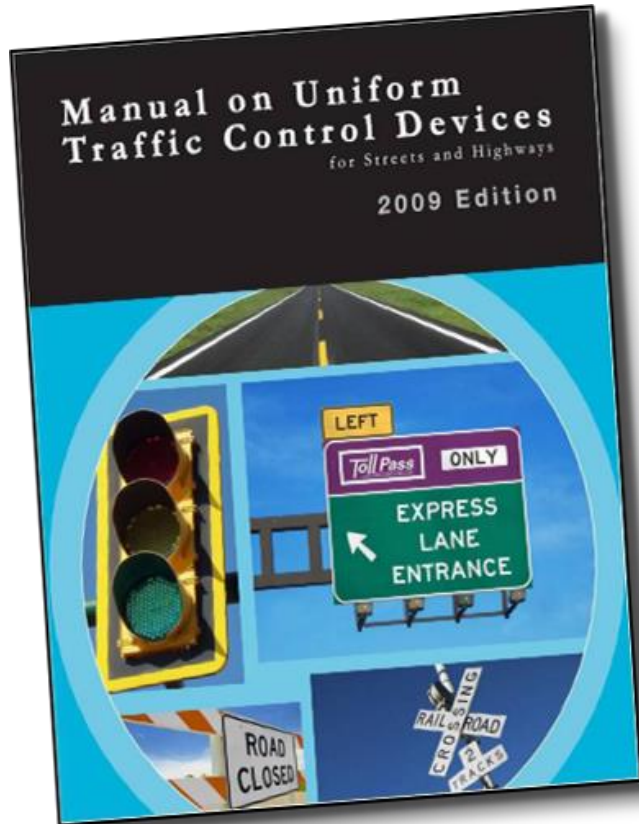


How Does ITC Work?

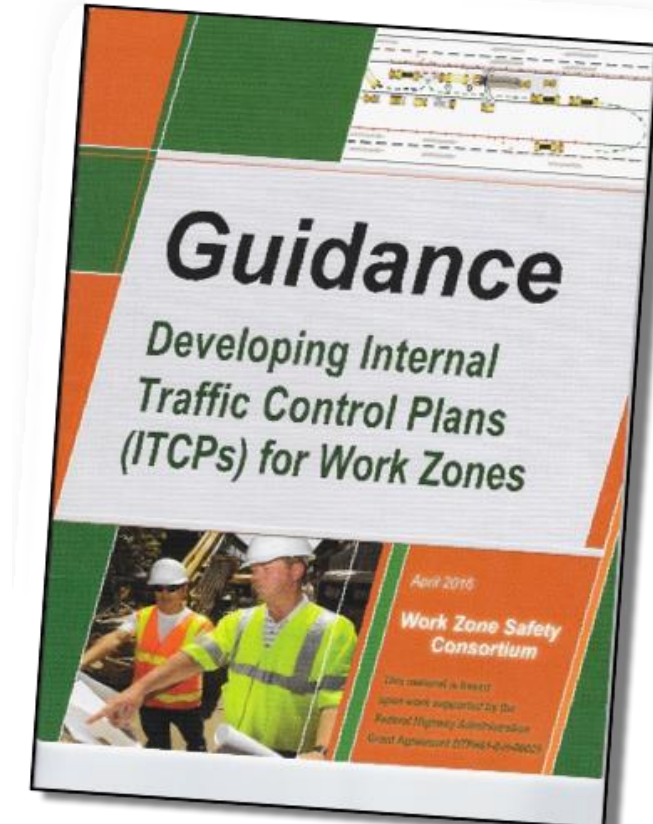


Differences Between TTC and ITC

TEMPORARY TRAFFIC CONTROL PLANS



INTERNAL TRAFFIC CONTROL PLANS



Differences Continued

TEMPORARY TRAFFIC CONTROL PLAN

Motor Vehicles

FHWA MUTCD or State

Traffic Engineer



INTERNAL TRAFFIC CONTROL PLAN

Construction Equipment

NIOSH Guide

Supervisor / Superintendent



TTC and ITC Share Safety Principles



Why Implement Internal Traffic Control?



Two Types of Runovers and Backovers

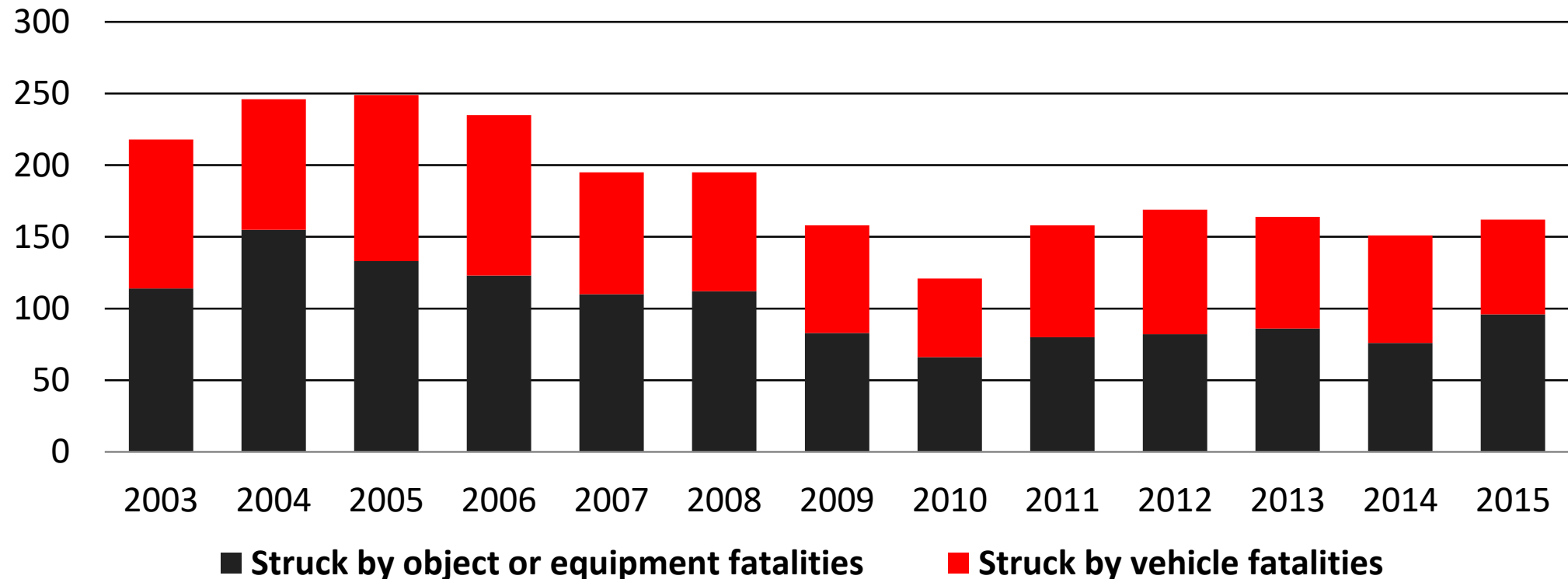
STRUCK BY MOTORISTS



STRUCK BY CONSTRUCTION EQUIPMENT



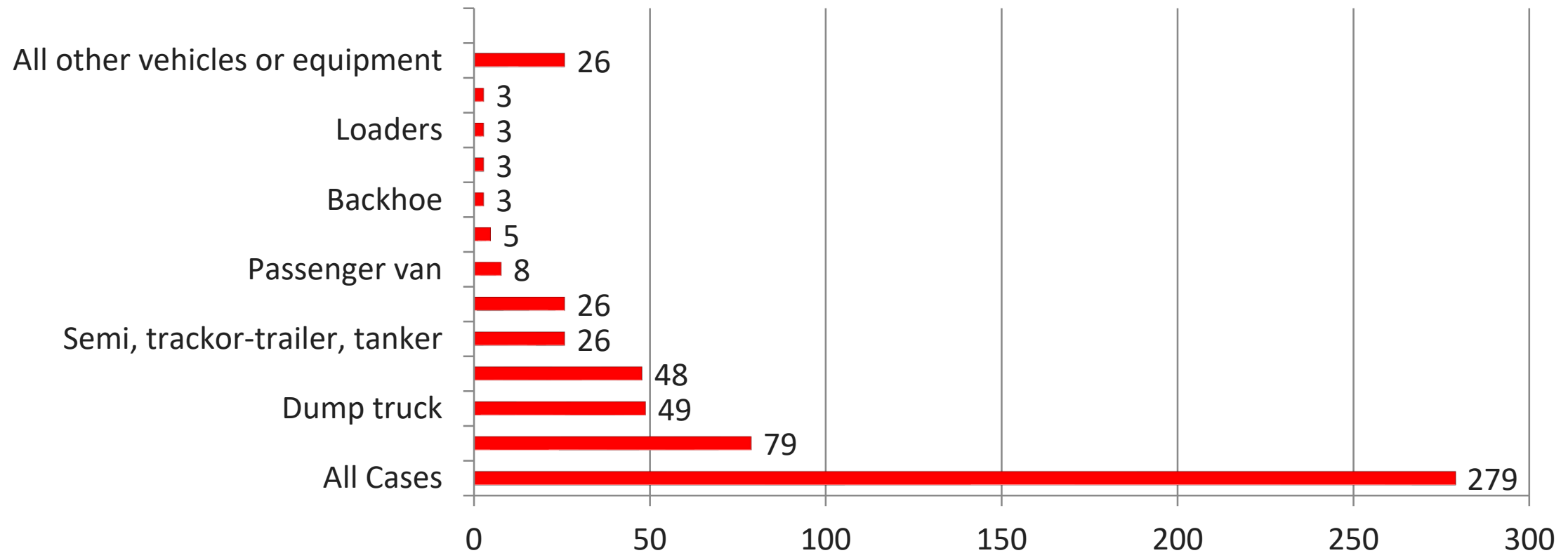
Fatalities in Road Construction



Source: U.S. Federal Highway Administration, National Work Zone Safety Information Clearinghouse and the U.S. Bureau of Labor Statistics; see http://www.ops.fhwa.dot.gov/wz/resources/facts_stats/safety.htm; <http://www.bls.gov/iag/tgs/iag237.htm>; <https://www.workzonesafety.org/crash-information/work-zone-fatal-crashes-fatalities/#national>

Vehicles Involved in Fatalities 2011-15

Source: Bureau of Labor Statistics



Source: <https://www.bls.gov/opub/mlr/2013/article/pdf/an-analysis-of-fatal-occupational-injuries-at-road-construction-sites-2003-2010.pdf>

Construction Vehicles Greatest Hazard



Daily Risk Assessment



Review Proximity of Workers and Vehicles



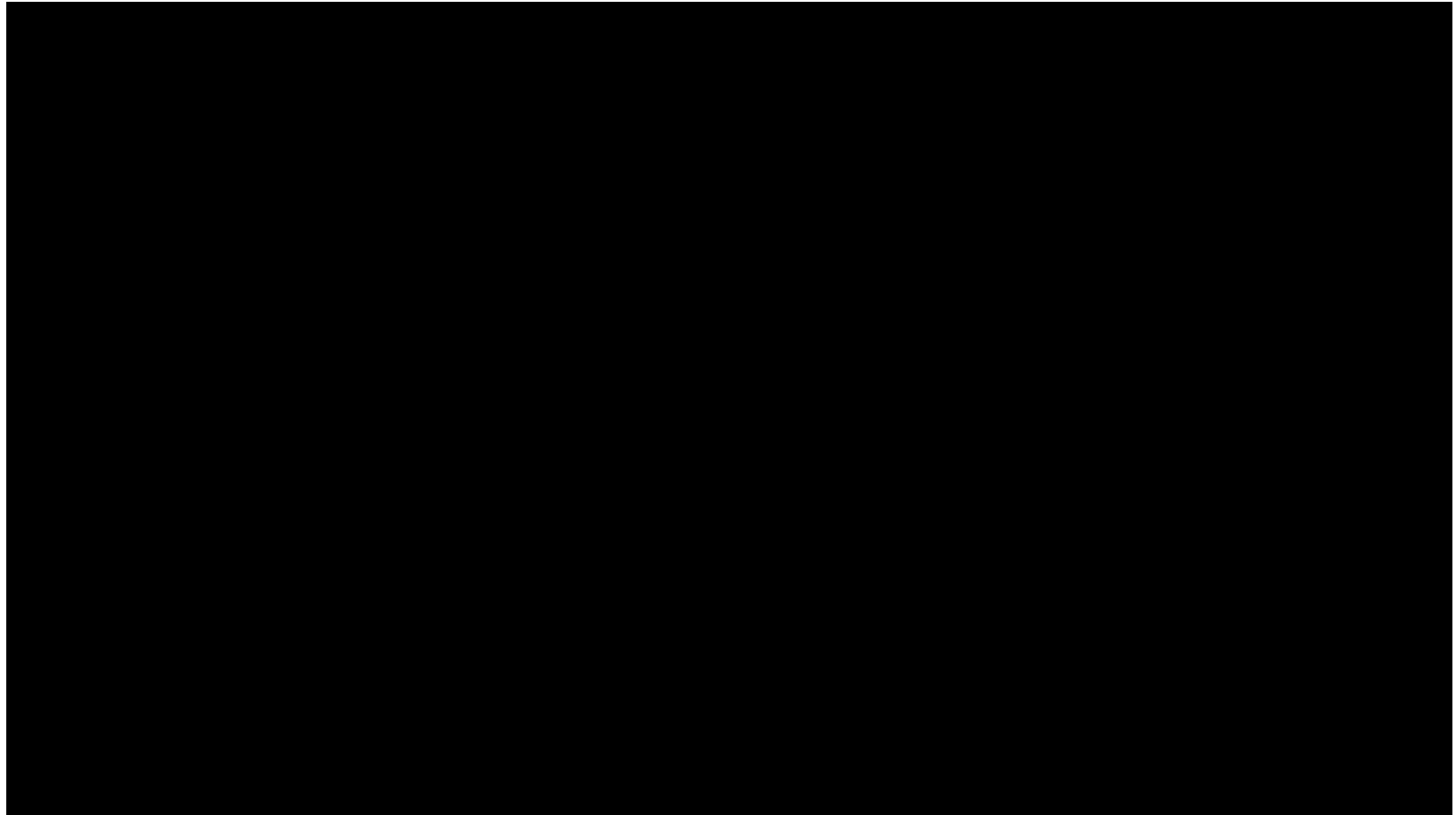
Note workers laboring in close proximity to moving vehicles and equipment; Intersecting travel paths.

Blind Spots

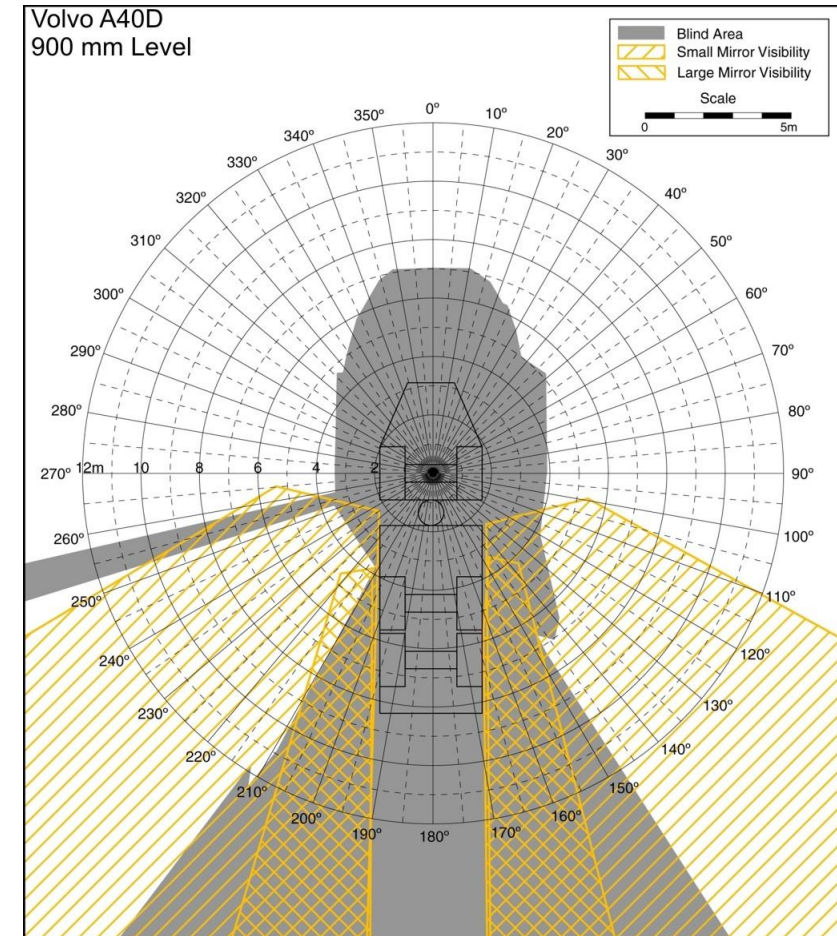


Video Presentation

Dump Truck Blind Spots



Blind Spots Are Different



Struck By Motorists



Organization of the Work Space



Discussion: How Can You Prevent Deaths Caused By Motorists?

Point out potential hazards from motorists in the photos



Using TTCDs Properly



Summary

- Define the meaning of Internal Traffic Control
- Describe how ITC works
- Explain the differences between TTC and ITC
- Identify the causes of most work zone fatalities
- List ways to prevent fatalities from construction vehicles and motorists

