



# Protecting Workers on Foot

Module 2 Student Workbook pages 9 - 16

# Learning Objectives

- Describe safe practices for workers on foot
- Describe safe practices for drivers and operators
- Explain how to set up worker-free and equipment-free zones
- Relate how to control parking, staging, and truck queues.



# Communication is the Key

---



# Four Categories of Safe Practices

---

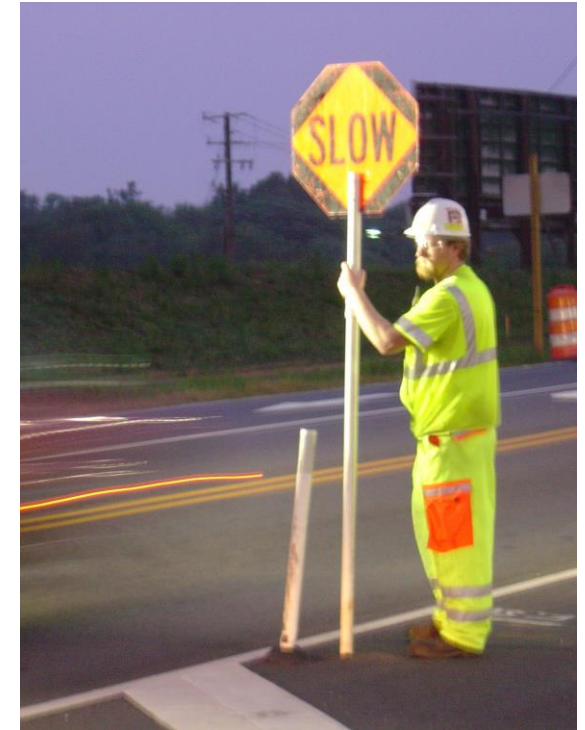
1. Habits and behavior
2. Visibility
3. Confirmed approach
4. Mitigate high risks



# Habits & Behavior



# Visibility



# Operators Confirm Approach



# Activity

---



Am I looking at  
you?

# Mitigating High Risk



# Mitigating High Risk Continued



# Safe Practices for Drivers & Operators

---

1. Back up safely
2. Know Your Surroundings
3. Designate a spotter
4. Walk around vehicle before backing
5. Use vehicle pathways



# Backing Up



# Know Your Surroundings



# Use a Spotter



# Activity: Practice Spotting Signals

---



# Walk Around Vehicle



# Use Vehicle Pathways

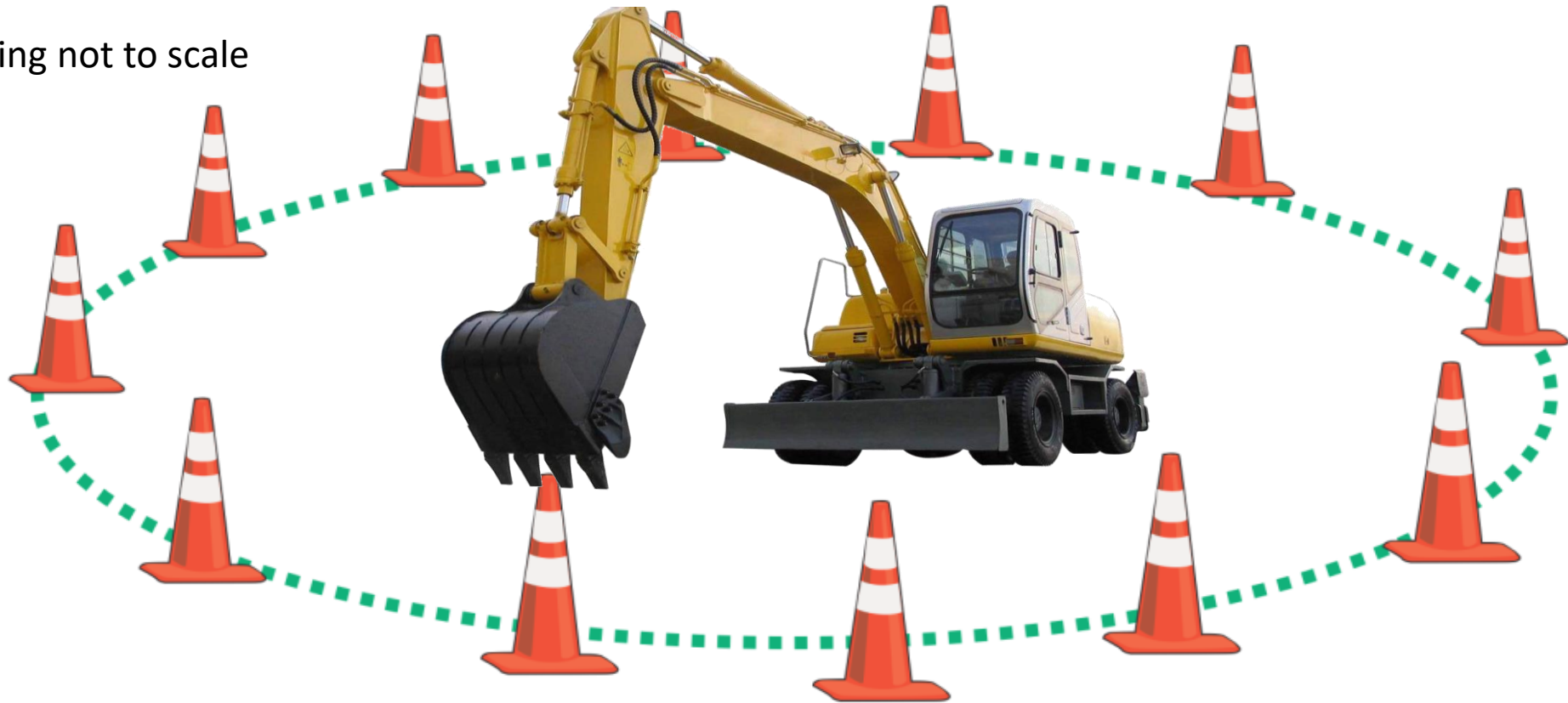
---



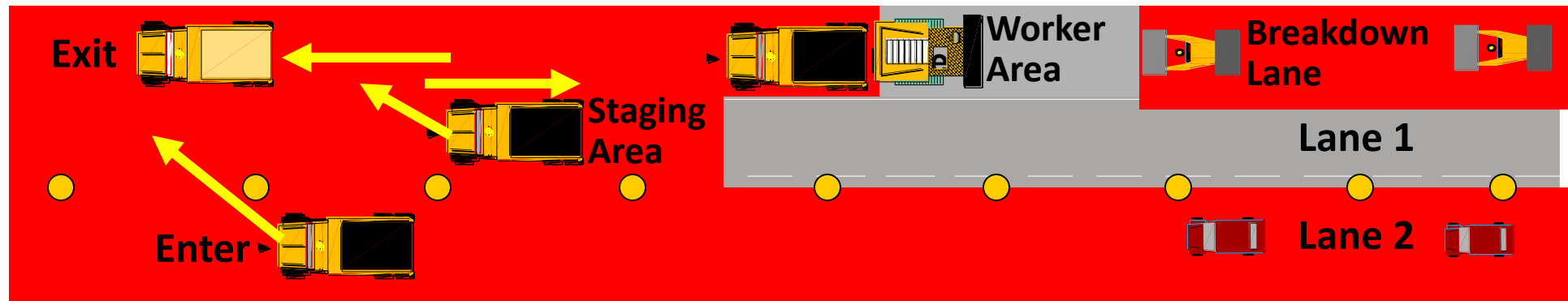
# Worker-Free & Equipment-Free Zones

---

Drawing not to scale

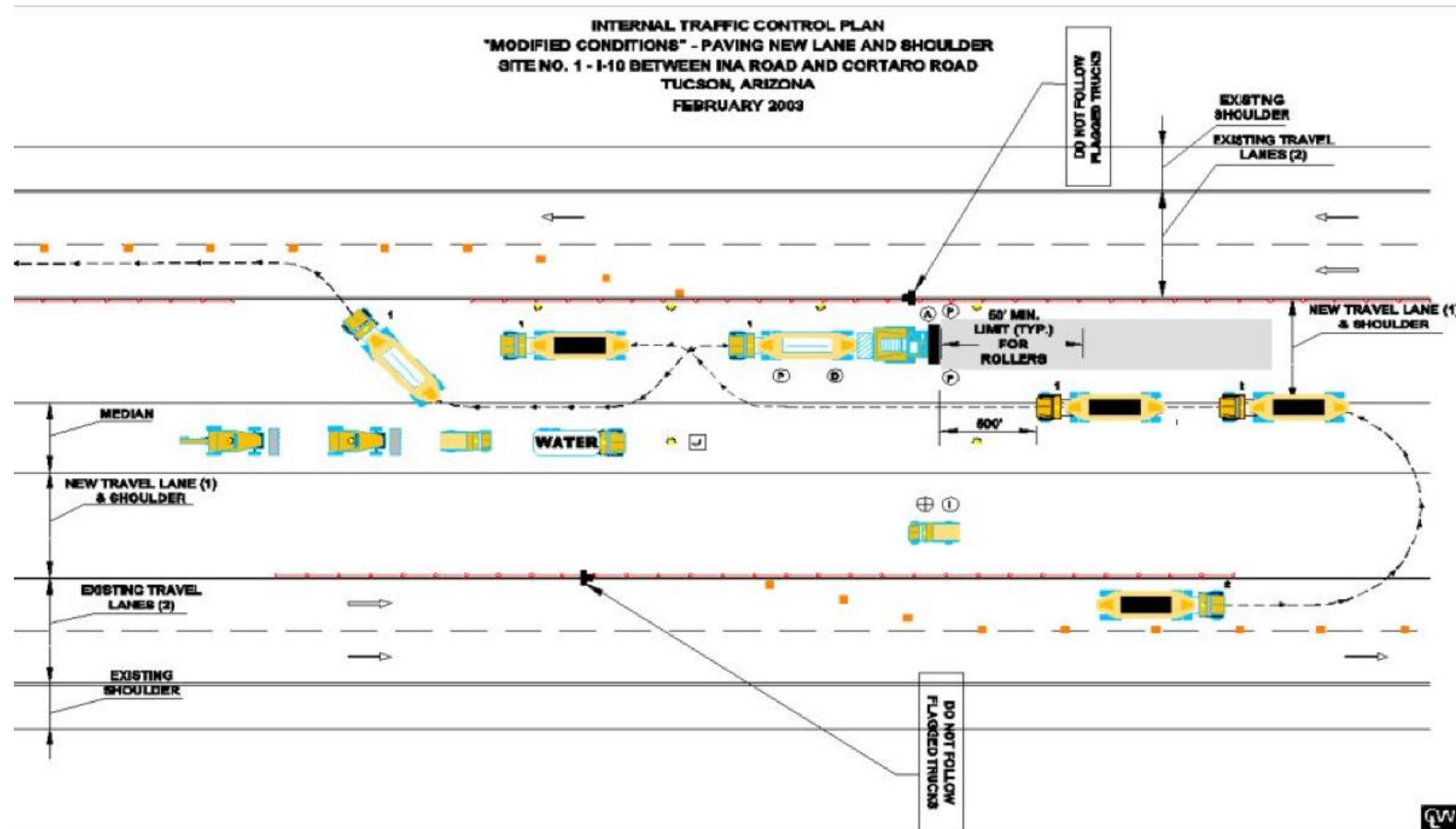


# Worker-Free Zone

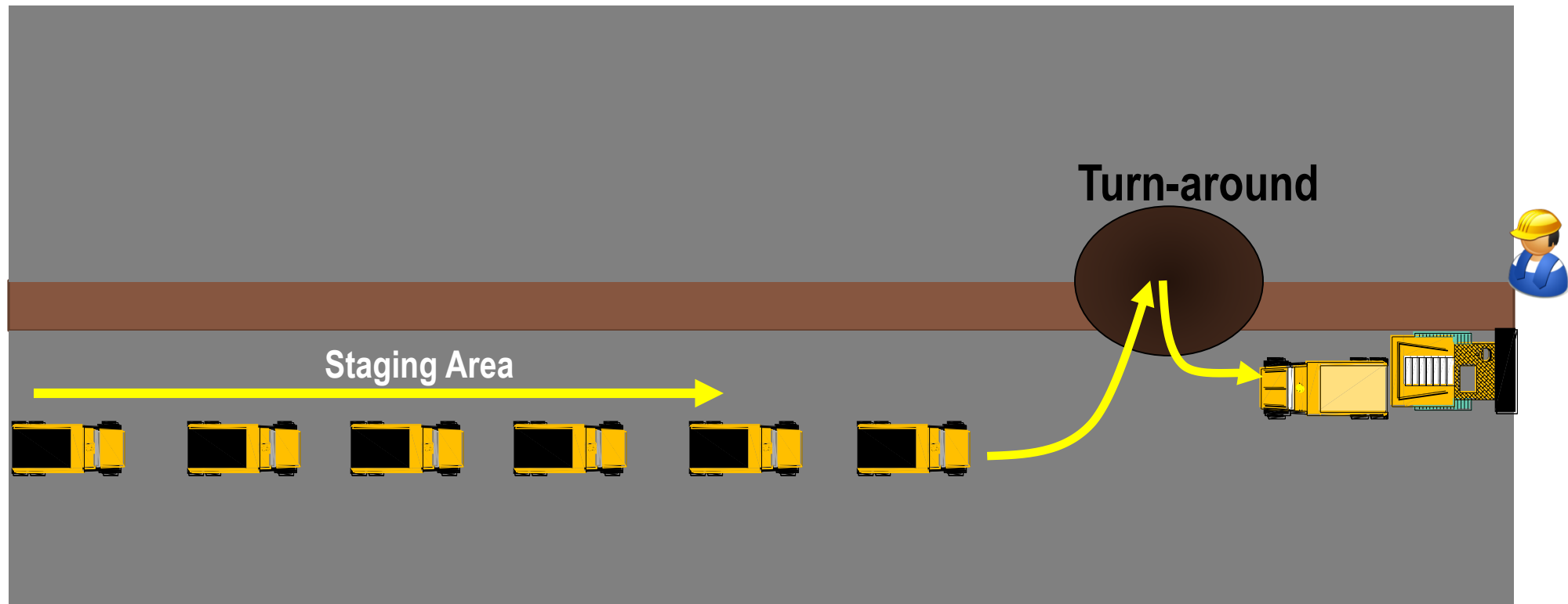


 = Worker-Free Zone

# Equipment Path



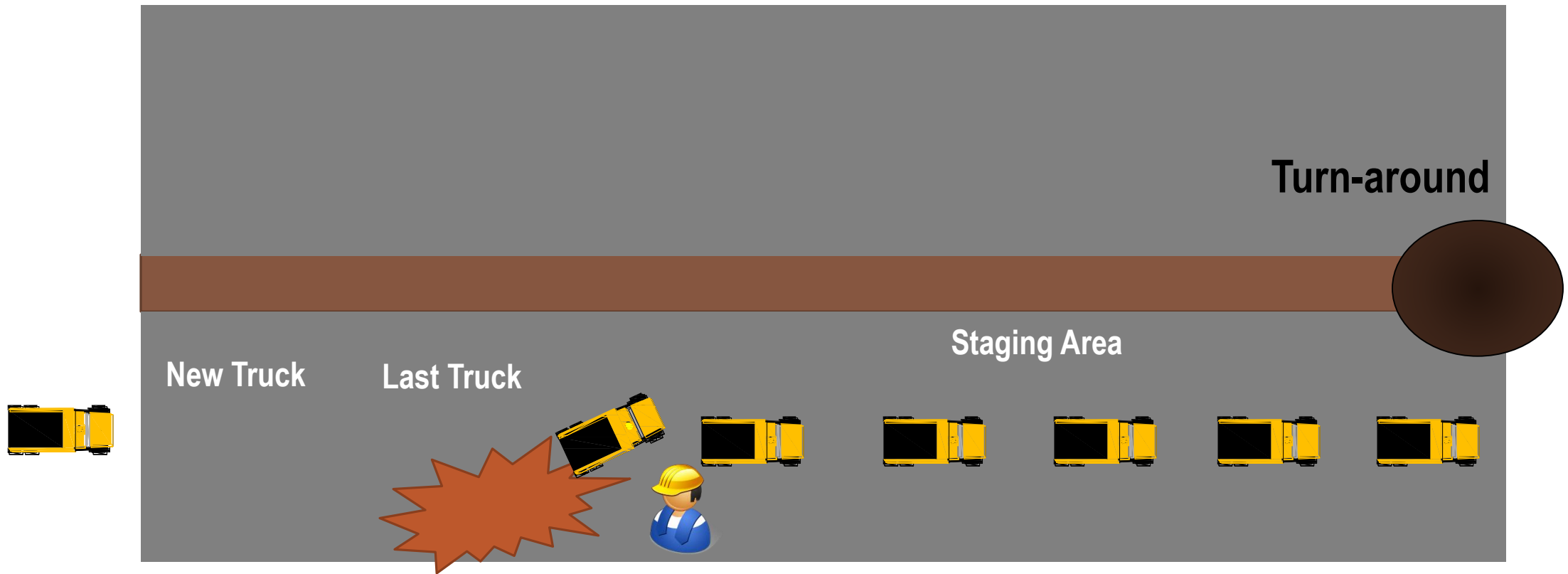
# Case Study: Concrete Paving



Minnesota Face Program (MN9207)

Not to Scale

# Case Study Continued



Minnesota Face Program (MN9207)

Not to Scale

# Parking & Staging Vehicles



# Vehicles Entering Work Space



# Truck Queues



# Using Technology

---

- Alarms
- Cameras
- RADAR
- SONAR
- Tag system
- GPS



# Summary

- Describe safe practices for workers on foot
- Describe safe practices for drivers and operators
- Explain how to set up worker-free and equipment-free zones
- Relate how to control parking, staging, and truck queues.

