



Access & Egress

Module 3 Student Workbook pages 17 - 20

Learning Objectives

- Explain why controlling access and egress points is so important
- Describe how an ITCP addresses access and egress
- Tell how FHWZ Subpart K impacts access and egress



Access & Egress



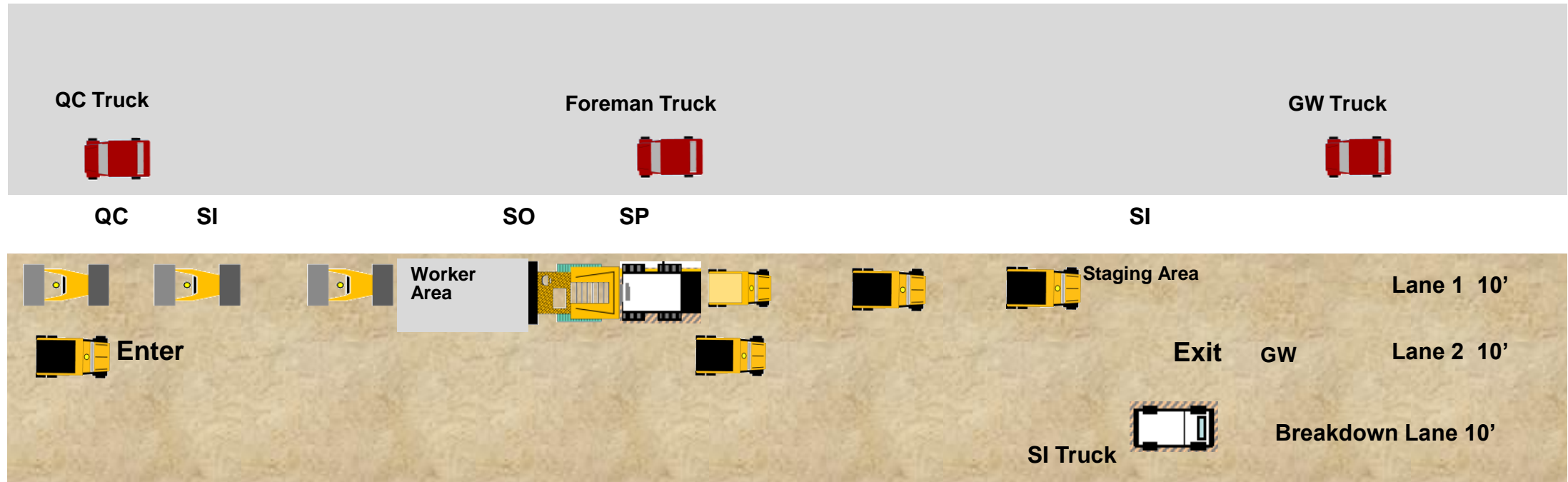
Access & Egress Challenges



Coordinating Tasks with an ITCP



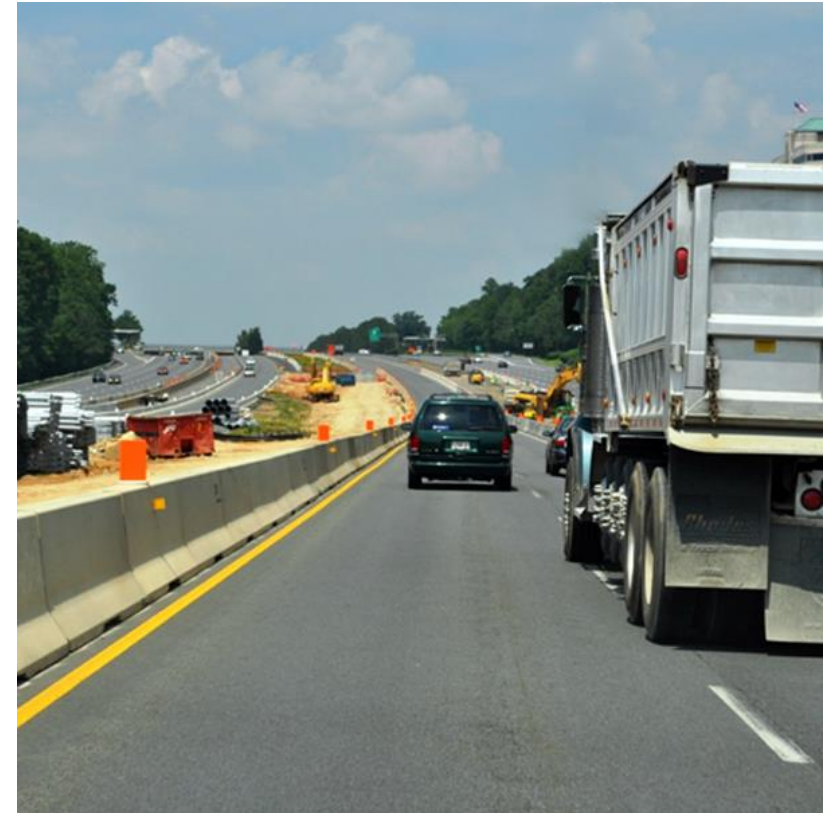
Challenges Addressed in ITCP



Discussion: Challenge #1

Trucks entering the work zone put motorists and those on the other side of the wall at risk.

What are the ITCP solutions?



Discussion: Challenge #2

Trucks queued inside the work zone create obstacles for workers and operators.

What are the ITCP solutions?



Discussion: Challenge #3

Trucks do not have enough space to slow down when entering, or to match speeds when exiting.

What are the ITCP solutions?



Discussion: Challenge #4

Motorists follow construction trucks into the work area.

What are the ITCP solutions?



Discussion: Challenge #5

Crew, operators, inspectors, subcontractors, and others are not up-to-date on access and egress locations as work progresses.

What are the ITCP solutions?



Discussion: Challenge #6

Motorists may breach barriers and strike workers near access and egress points.

What are the ITCP solutions?



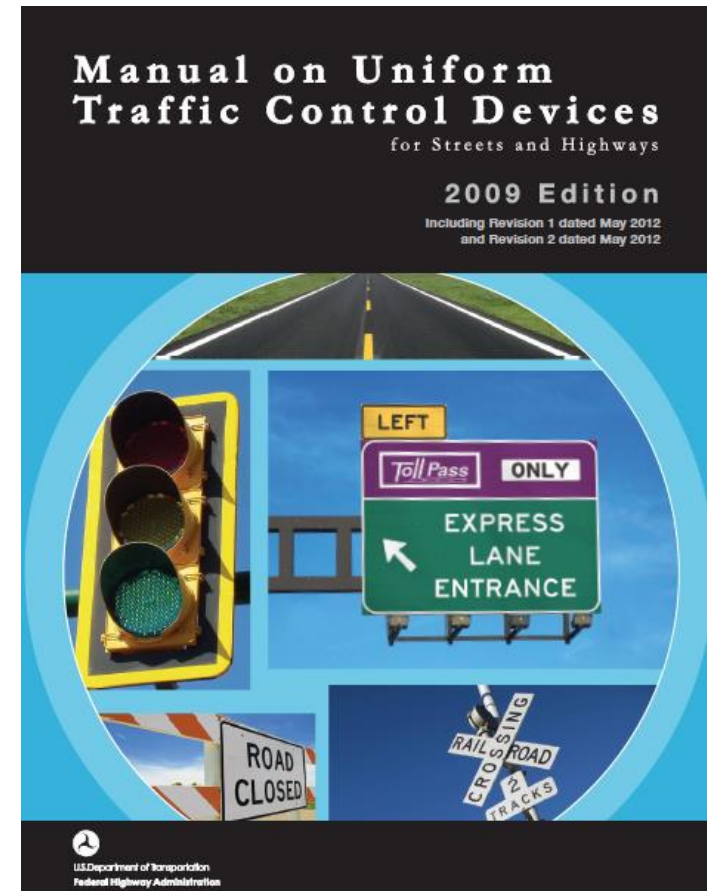
Discussion: Challenge #7

Emergency responders need access when incidents occur within the work zone.

What are the ITCP solutions?



Federal Regulations



Summary

- Explain why controlling access and egress points is so important
- Describe how an ITCP addresses access and egress
- Tell how FHWZ Subpart K impacts access and egress

